

SERIE RS

Riduttori ad assi paralleli di impiego corrente negli organi di sollevamento.

Disponibili in 5 grandezze con interassi totali da 450 mm a 750 mm e portate di sollevamento da 3 ton a 32 ton, azionano direttamente il tamburo dell'argano.

L'applicazione del differenziale serie F permette di ottenere diverse velocità di sollevamento per un preciso e sicuro posizionamento.

SERIES RS

Parallel shaft geared reducers widely used in lifting apparatus.

They drive the winch drum direct and are available in 5 sizes with total centre distance 450 to 750 mm and lifting capacity 3 to 32 tons.

Different lifting speeds can be obtained by fitting the series F differential geared units to achieve an accurate and faultless positioning.

SERIE RS

Diese Strinradgetriebe sind speziell für den Einsatz auf Hubwerken entwickelt worden.

Die 5 angebotenen Getriebegrößen mit Achsabstand von 450 bis 750 mm und Hubleistungen von 3 bis 32 To. übertragen die Bewegung direkt auf die Hubwerkrolle.

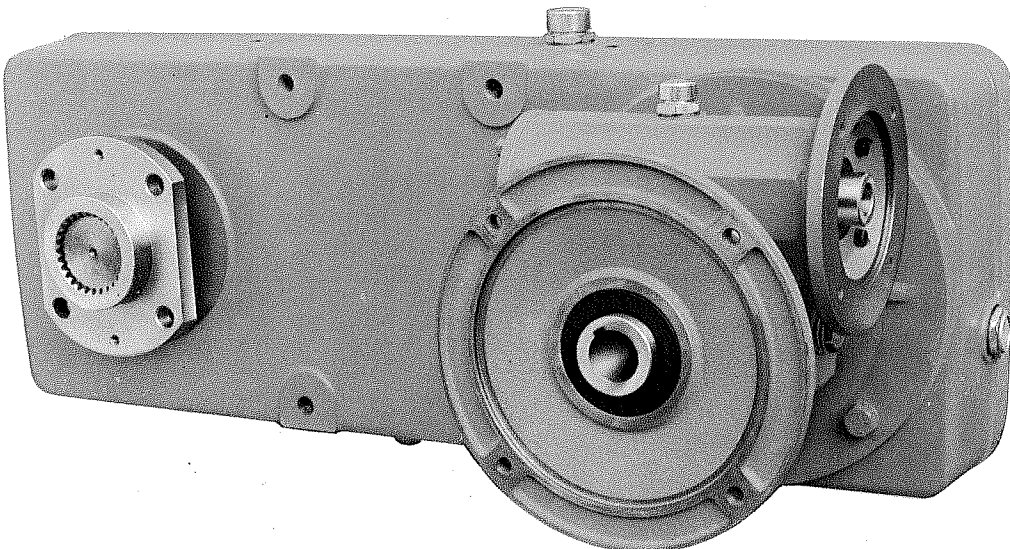
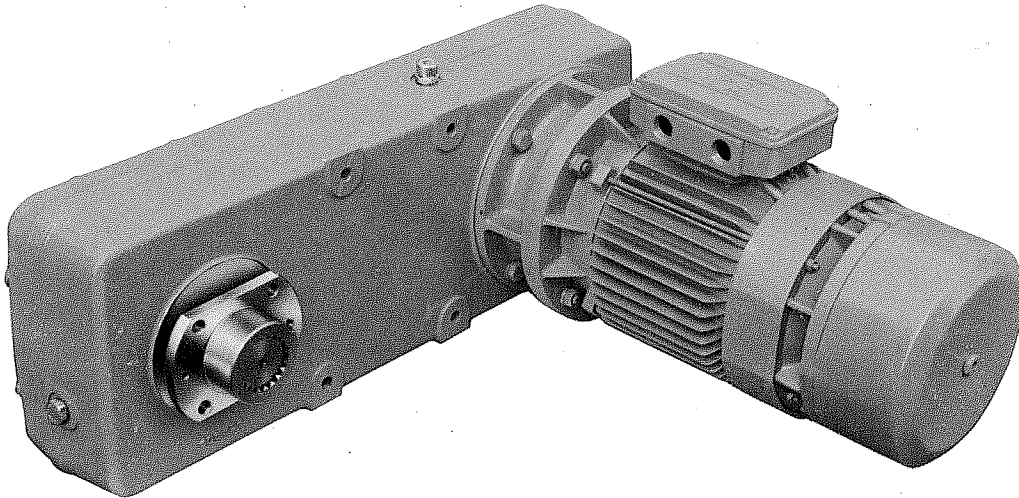
Mit der Nachrüstung eines Differentialgetriebes Serie F lassen sich verschiedene Hubgeschwindigkeiten ansteuern.

SERIE RS

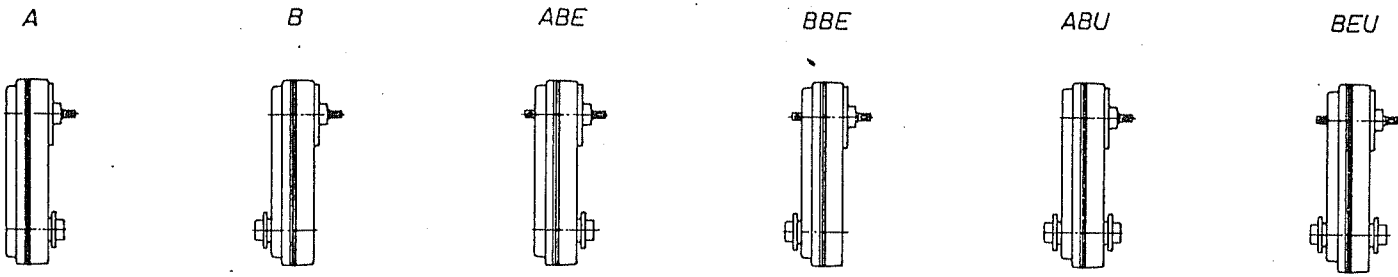
Réducteurs à axes parallèles couramment employés dans les appareils de levage.

Disponibles en 5 grandeurs avec entraxes totaux de 450 mm à 750 mm et capacités de levage de 3 à 32 tonnes; ils actionnent directement le tambour du treuil.

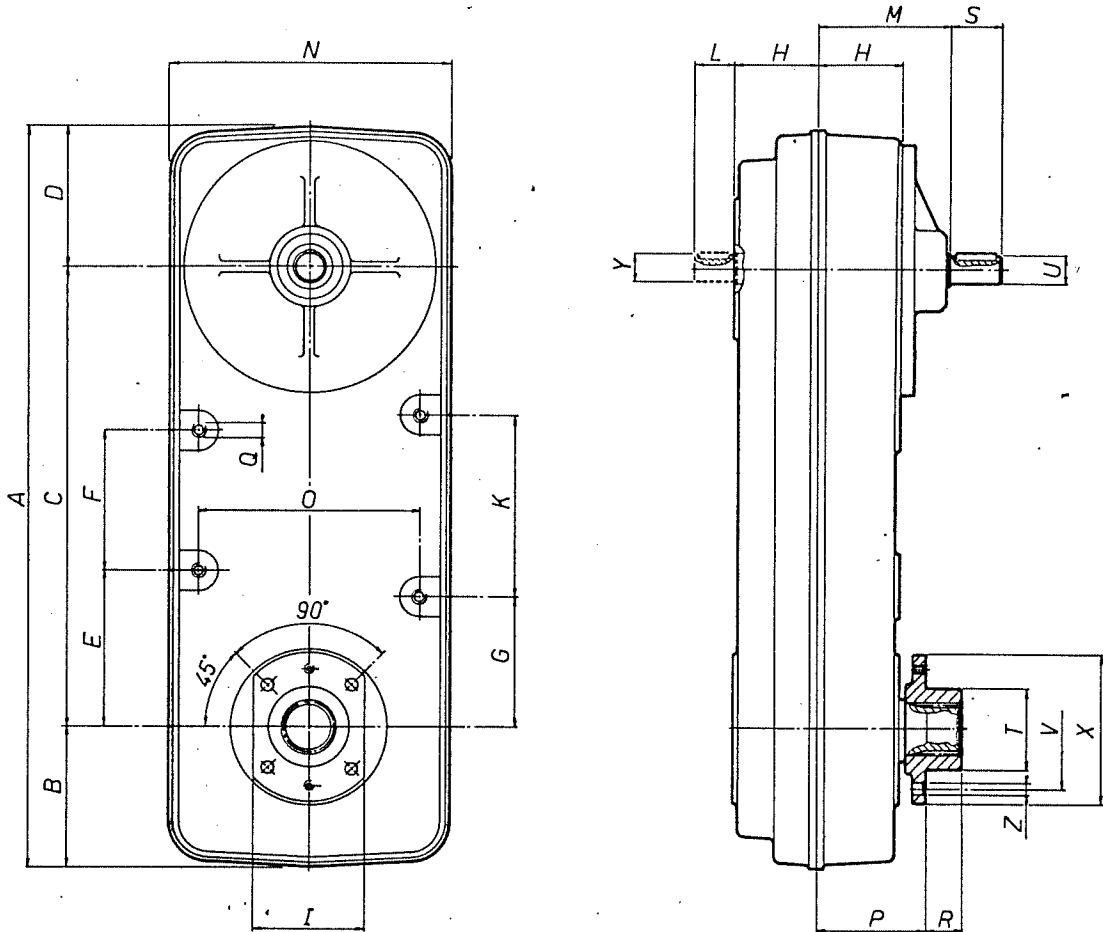
L'application du différentiel série F permet d'obtenir des vitesses différentes de soulèvement pour un positionnement sûr et précis.



Available assemblies RS/N



Main dimensions, weights and oil capacities RS/N



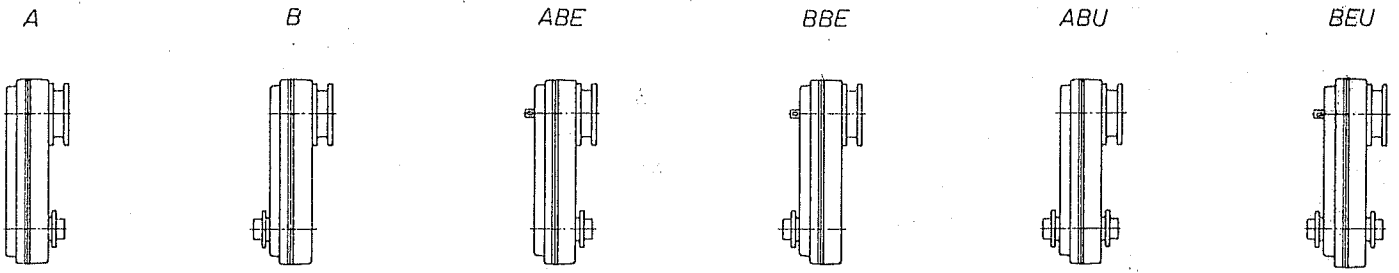
RS	A	B	C	D	E	F	G	H	K	I	L	M	N	O	P	Q	R	S	T	U	V	X	Y	Z	Mass Kg	oil Kg
2500	737	140	457	140	155	140	130	82.5	180	110	40	130	280	220	106	M14	36	50	80	28	120	150	28	11.5	110	7
3200	880	170	540	170	165	210	165	92.5	225	150	45	140	350	285	130	M18	38	60	100	32	160	200	32	18	180	9
5000	1015	190	635	190	180	220	180	105	270	170	60	155	380	310	157	M20	27	80	110	38	180	220	38	20	240	11
8000	1180	225	755	200	220	270	220	147.5	300	200	70	195	450	370	197	M22	40	110	145	42	200	250	40	22	450	21

Momentum of inertia RS/N

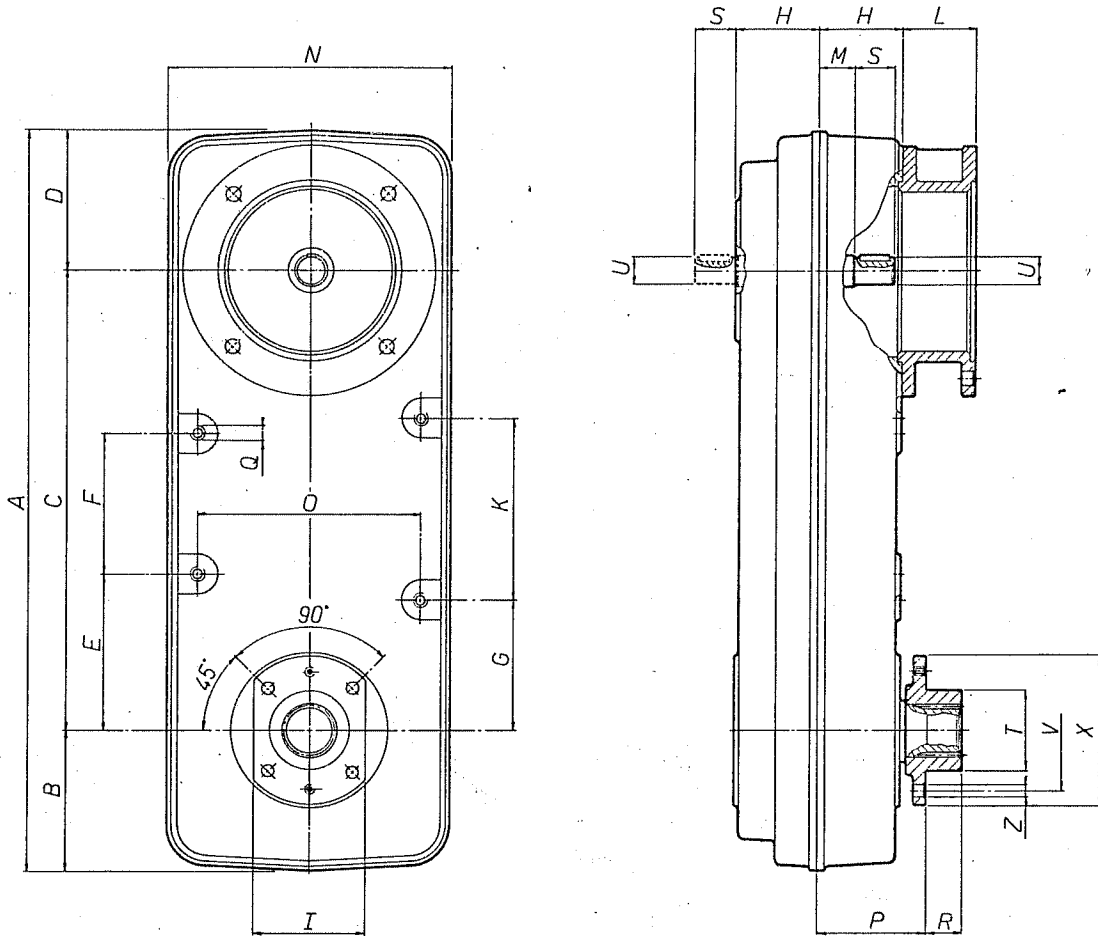
RS	Transmission ratio i															
	45	50	56	63	71	80	90	100	112	125	140	160	180	200	225	250
2500	Q.00353	Q.00276	Q.00230	Q.00193	Q.00164	Q.00143	Q.00125	Q.00112	Q.00101	Q.00093	Q.00085	Q.00080	Q.00074	Q.00070	Q.00068	Q.00067
3200	Q.00705	Q.00551	Q.00459	Q.00386	Q.00328	Q.00286	Q.00251	Q.00226	Q.00204	Q.00188	Q.00172	Q.00163	Q.00152	Q.00144	Q.00140	Q.00138
5000	Q.01242	Q.00970	Q.00808	Q.00680	Q.00579	Q.00506	Q.00444	Q.00400	Q.00362	Q.00335	Q.00308	Q.00293	Q.00274	Q.00260	Q.00253	Q.00250
8000	Q.04608	Q.03600	Q.03000	Q.02525	Q.02150	Q.01880	Q.01650	Q.01490	Q.01350	Q.01250	Q.01150	Q.01095	Q.01025	Q.00975	Q.00950	Q.00942

The momentum of inertia J is expressed in kgm^2 in the international unit system SI. The given data refer to the high speed shaft. They must be multiplied by i^2 if we want to refer them to the low speed shaft. We can obtain the so-called "dynamic momentum" GD^2 [kgm^2], in the older technical unit system, by multiplying J by 4.

Available assemblies RS/M



Main dimensions, weights and oil capacities RS/M



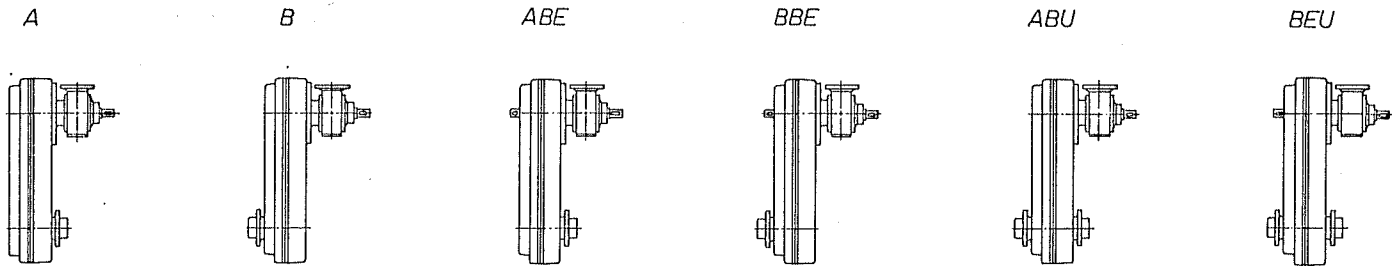
RS	A	B	C	D	E	F	G	H	K	I	L	M	N	O	P	Q	R	S	T	U	V	X	Z	Mass Kg	oil Kg
2500	737	140	457	140	155	140	130	82 _s	180	110	75	35	280	220	106	M14	36	40	80	28	120	150	11	110	7
3200	880	170	540	170	165	210	165	92 _s	225	150	105 _s	40	350	285	130	M18	38	45	100	32	160	200	18	180	9
5000	1015	190	635	190	180	220	180	105	270	170	112	43	380	310	157	M20	27	60	110	38	180	220	20	240	11
8000	1180	225	755	200	220	270	220	147 _s	300	200	112	72	450	370	197	M22	40	70	145	40	200	250	22	450	21

Momentum of inertia RS/M

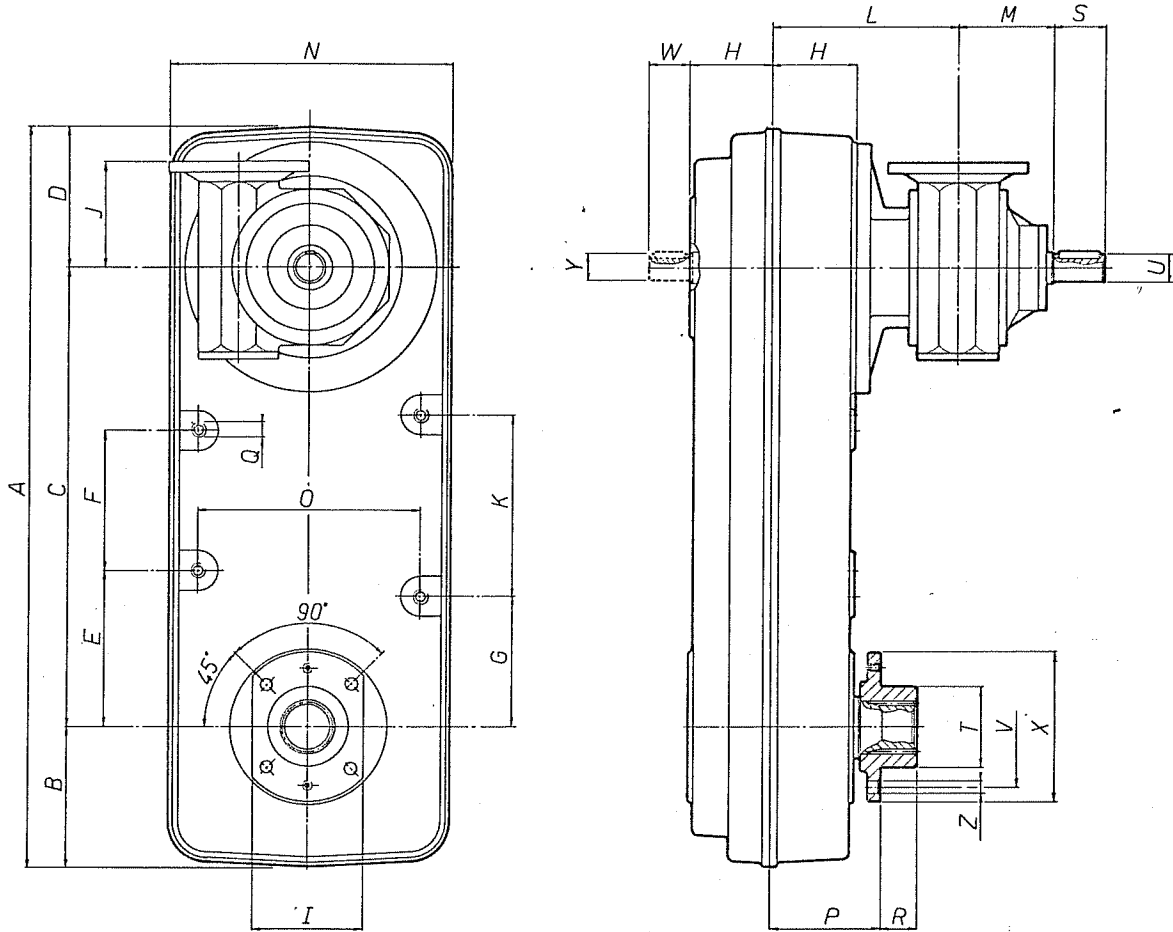
RS	Transmission ratio <i>i</i>															
	45	50	56	63	71	80	90	100	112	125	140	160	180	200	225	250
2500	0.00353	0.00276	0.00230	0.00193	0.00164	0.00143	0.00125	0.00112	0.00101	0.00093	0.00085	0.00080	0.00074	0.00070	0.00068	0.00067
3200	0.00705	0.00551	0.00459	0.00386	0.00328	0.00286	0.00251	0.00226	0.00204	0.00188	0.00172	0.00163	0.00152	0.00144	0.00140	0.00138
5000	0.01242	0.00970	0.00808	0.00680	0.00579	0.00506	0.00444	0.00400	0.00362	0.00335	0.00308	0.00293	0.00274	0.00260	0.00253	0.00250
8000	0.04608	0.03600	0.03000	0.02525	0.02150	0.01880	0.01650	0.01490	0.01350	0.01250	0.01150	0.01095	0.01025	0.00975	0.00950	0.00942

The momentum of inertia *J* is expressed in kgm^2 in the international unit system SI. The given data refer to the high speed shaft. They must be multiplied by i^2 if we want to refer them to the low speed shaft. We can obtain the so-called "dynamic momentum" $\text{GD}^2 [\text{kp}m^2]$, in the older technical unit system, by multiplying *J* by 4.

Available assemblies RS/F



Main dimension, weights, and oil capacities RS/F



RS	A	B	C	D	E	F	G	H	J	K	I	L	M	N	O	P	Q	R	S _{all}	T _{1ø}	U	V	W	X	Y	Z	Mass Kg	Oil Kg
2500	737	140	457	140	155	140	130	82 _s	105	180	110	183 _s	95	280	220	106	M14	36	50	80	28	120	40	150	28	11	127	8.5
3200	880	170	540	170	165	210	165	92 _s	126	225	150	202 _s	105	350	285	130	M18	38	80	100	32	160	45	200	32	18	209	11
5000	1015	190	635	190	180	220	180	105	150	270	170	238 _s	128	380	310	157	M20	27	80	110	38	180	60	220	38	20	288	14
8000	1180	225	755	200	220	270	220	147 _s	180	300	200	282 _s	160	450	370	197	M22	40	110	145	48	200	70	250	40	22	524	26

Momentum of inertia RS/F

RS	Transmission ratio <i>i</i>															
	45	50	56	63	71	80	90	100	112	125	140	160	180	200	225	250
2500	0.00353	0.00276	0.00230	0.00193	0.00164	0.00143	0.00125	0.00112	0.00101	0.00093	0.00085	0.00080	0.00074	0.00070	0.00068	0.00067
3200	0.00705	0.00551	0.00459	0.00386	0.00328	0.00286	0.00251	0.00226	0.00204	0.00188	0.00172	0.00163	0.00152	0.00144	0.00140	0.00138
5000	0.01242	0.00970	0.00808	0.00680	0.00579	0.00506	0.00444	0.00400	0.00362	0.00335	0.00308	0.00293	0.00274	0.00260	0.00253	0.00250
8000	0.04608	0.03600	0.03000	0.02525	0.02150	0.01880	0.01650	0.01490	0.01350	0.01250	0.01150	0.01095	0.01025	0.00975	0.00950	0.00942

The momentum of inertia *J* is expressed in kgm^2 in the international unit system SI. The given data refer to the high speed shaft. They must be multiplied by i^2 if we want to refer them to the low speed shaft. We can obtain the so called "dynamic momentum" GD^2 [kp^2], in the older technical unit system, by multiplying *J* by 4.

Nominal power and torque ratings RS

Size	2500					Size	2500						
Ratio <i>i</i>	<i>n_v</i>	<i>n_l</i>	<i>M_{Nl}</i>	<i>P_N</i>		<i>P_t</i>	Ratio <i>i</i>	<i>n_v</i>	<i>n_l</i>	<i>M_{Nl}</i>	<i>P_N</i>		<i>P_t</i>
	rpm	rpm	Nm	CV	kW	kW		rpm	rpm	Nm	CV	kW	kW
45	1750	40	2000	11	8	21	112	1750	16	2000	4.5	3.3	21
	1450	33	2000	9.3	6.9			1450	13	2000	3.7	2.8	
	1000	23	2000	6.4	4.7			1000	9	2000	2.6	1.9	
	800	18	2000	5.1	3.8			800	7	2000	2.1	1.5	
	630	14	2000	4.1	3			630	6	2000	1.6	1.2	
	500	11	2000	3.2	2.4			500	5	2000	1.3	0.9	
50	1750	35	2000	9.9	7.3	21	125	1750	14	2000	4.1	3	21
	1450	29	2000	8.2	6			1450	12	2000	3.4	2.5	
	1000	20	2000	5.7	4.2			1000	8	2000	2.3	1.7	
	800	16	2000	4.5	3.3			800	7	2000	1.9	1.4	
	630	13	2000	3.6	2.6			630	5	2000	1.5	1.1	
	500	10	2000	2.8	2.1			500	4	2000	1.2	0.9	
56	1750	31	2000	8.7	6.4	21	140	1750	13	2000	3.6	2.7	21
	1450	25	2000	7.2	5.3			1450	11	2000	3	2.2	
	1000	17	2000	5	3.7			1000	7	2000	2.1	1.5	
	800	14	2000	4	2.9			800	6	2000	1.7	1.2	
	630	11	2000	3.1	2.3			630	5	2000	1.3	1	
	500	9	2000	2.5	1.8			500	4	2000	1	0.8	
63	1750	28	2000	8	5.9	21	160	1750	11	2000	3.2	2.4	21
	1450	23	2000	6.6	4.9			1450	9	2000	2.7	2	
	1000	16	2000	4.6	3.4			1000	6	2000	1.8	1.3	
	800	13	2000	3.7	2.7			800	5	2000	1.5	1.1	
	630	10	2000	2.9	2.1			630	4	2000	1.2	0.8	
	500	8	2000	2.3	1.7			500	3	2000	0.92	0.67	
71	1750	25	2000	7	5.1	21	180	1750	10	2000	2.8	2.1	21
	1450	20	2000	5.8	4.3			1450	8	2000	2.3	1.7	
	1000	14	2000	4	2.9			1000	6	2000	1.6	1.2	
	800	11	2000	3.2	2.4			800	5	2000	1.3	0.9	
	630	9	2000	2.5	1.9			630	4	2000	1	0.7	
	500	7	2000	2	1.5			500	3	2000	0.81	0.59	
80	1750	21	2000	6.1	4.5	21	200	1750	9	2000	2.5	1.8	21
	1450	18	2000	5	3.7			1450	7	2000	2	1.5	
	1000	12	2000	3.5	2.6			1000	5	2000	1.4	1	
	800	10	2000	2.8	2			800	4	2000	1.1	0.8	
	630	8	2000	2.2	1.6			630	3	2000	0.88	0.65	
	500	6	2000	1.7	1.3			500	2	2000	0.7	0.52	
90	1750	19	2000	5.5	4.1	21	225	1750	8	2000	2.3	1.7	21
	1450	16	2000	4.6	3.4			1450	7	2000	1.9	1.4	
	1000	11	2000	3.2	2.3			1000	5	2000	1.3	1	
	800	9	2000	2.5	1.9			800	4	2000	1	0.8	
	630	7	2000	2	1.5			630	3	2000	0.82	0.6	
	500	6	2000	1.6	1.2			500	2	2000	0.65	0.48	
100	1750	18	2000	5	3.7	21	250	1750	7	2000	2	1.5	21
	1450	15	2000	4.2	3.1			1450	6	2000	1.7	1.2	
	1000	10	2000	2.9	2.1			1000	4	2000	1.1	0.8	
	800	8	2000	2.3	1.7			800	3	2000	0.92	0.68	
	630	6	2000	1.8	1.3			630	3	2000	0.72	0.53	
	500	5	2000	1.4	1.1			500	2	2000	0.57	0.42	
Ratio <i>i</i>	<i>n_v</i>	<i>n_l</i>	<i>M_{Nl}</i>	<i>P_N</i>		<i>P_t</i>	Ratio <i>i</i>	<i>n_v</i>	<i>n_l</i>	<i>M_{Nl}</i>	<i>P_N</i>		<i>P_t</i>
	rpm	rpm	Nm	CV	kW	kW		rpm	rpm	Nm	CV	kW	kW

n_v: revolutions per minute of the high speed shaft [r.p.m.].

n_l: revolutions per minute of the low speed shaft [r.p.m.].

M_{Nl}: nominal torque of the low speed shaft [Nm].

P_N: nominal power at low speed shaft [CV (horse-power)-kW].

P_t: thermal capacity [kW].

i: transmission ratio *n_v/n_l*.

Nominal power and torque ratings RS

Size	2500 P					Size	2500 P						
Ratio <i>i</i>	<i>n_v</i>	<i>n_l</i>	<i>MN_l</i>	<i>P_N</i>		<i>P_t</i>	Ratio <i>i</i>	<i>n_v</i>	<i>n_l</i>	<i>MN_l</i>	<i>P_N</i>		<i>P_t</i>
	rpm	rpm	Nm	CV	kW	kW		rpm	rpm	Nm	CV	kW	kW
45	1750	40	2600	15	11	21	112	1750	16	2600	5.9	4.3	21
	1450	33	2600	12	9			1450	13	2600	4.9	3.6	
	1000	23	2600	8.4	6.1			1000	9	2600	3.4	2.5	
	800	18	2600	6.7	4.9			800	7	2600	2.7	2	
	630	14	2600	5.3	3.9			630	6	2600	2.1	1.6	
	500	11	2600	4.2	3.1			500	5	2600	1.7	1.2	
50	1750	35	2600	13	9	21	125	1750	14	2600	5.3	3.9	21
	1450	29	2600	11	8			1450	12	2600	4.4	3.2	
	1000	20	2600	7.4	5.4			1000	8	2600	3	2.2	
	800	16	2600	5.9	4.3			800	7	2600	2.4	1.8	
	630	13	2600	4.6	3.4			630	5	2600	1.9	1.4	
	500	10	2600	3.7	2.7			500	4	2600	1.5	1.1	
56	1750	31	2600	11	8	21	140	1750	13	2600	4.7	3.5	21
	1450	25	2600	9.4	6.9			1450	11	2600	3.9	2.9	
	1000	17	2600	6.5	4.8			1000	7	2600	2.7	2	
	800	14	2600	5.2	3.8			800	6	2600	2.1	1.6	
	630	11	2600	4.1	3			630	5	2600	1.7	1.2	
	500	9	2600	3.2	2.4			500	4	2600	1.3	1	
63	1750	28	2600	10	8	21	160	1750	11	2600	4.2	3.1	21
	1450	23	2600	8.6	6.3			1450	9	2600	3.4	2.5	
	1000	16	2600	5.9	4.4			1000	6	2600	2.4	1.7	
	800	13	2600	4.8	3.5			800	5	2600	1.9	1.4	
	630	10	2600	3.7	2.8			630	4	2600	1.5	1.1	
	500	8	2600	3	2.2			500	3	2600	1.2	0.9	
71	1750	25	2600	9.1	6.7	21	180	1750	10	2600	3.7	2.7	21
	1450	20	2600	7.5	5.5			1450	8	2600	3	2.2	
	1000	14	2600	5.2	3.8			1000	6	2600	2.1	1.5	
	800	11	2600	4.2	3.1			800	5	2600	1.7	1.2	
	630	9	2600	3.3	2.4			630	4	2600	1.3	1	
	500	7	2600	2.6	1.9			500	3	2600	1	0.8	
80	1750	21	2600	7.9	5.8	21	200	1750	9	2600	3.2	2.3	21
	1450	18	2600	6.6	4.8			1450	7	2600	2.6	1.9	
	1000	12	2600	4.5	3.3			1000	5	2600	1.8	1.3	
	800	10	2600	3.6	2.7			800	4	2600	1.5	1.1	
	630	8	2600	2.9	2.1			630	3	2600	1.1	0.8	
	500	6	2600	2.3	1.7			500	2	2600	0.91	0.67	
90	1750	19	2600	7.2	5.3	21	225	1750	8	2600	3	2.2	21
	1450	16	2600	6	4.4			1450	7	2600	2.5	1.8	
	1000	11	2600	4.1	3			1000	5	2600	1.7	1.2	
	800	9	2600	3.3	2.4			800	4	2600	1.4	1	
	630	7	2600	2.6	1.9			630	3	2600	1.1	0.8	
	500	6	2600	2.1	1.5			500	2	2600	0.85	0.62	
100	1750	18	2600	6.5	4.8	21	250	1750	7	2600	2.6	1.9	21
	1450	15	2600	5.4	4			1450	6	2600	2.2	1.6	
	1000	10	2600	3.7	2.7			1000	4	2600	1.5	1.1	
	800	8	2600	3	2.2			800	3	2600	1.2	0.9	
	630	6	2600	2.3	1.7			630	3	2600	0.94	0.69	
	500	5	2600	1.9	1.4			500	2	2600	0.75	0.55	
Ratio <i>i</i>	<i>n_v</i>	<i>n_l</i>	<i>MN_l</i>	<i>P_N</i>		<i>P_t</i>	Ratio <i>i</i>	<i>n_v</i>	<i>n_l</i>	<i>MN_l</i>	<i>P_N</i>		<i>P_t</i>
	rpm	rpm	Nm	CV	kW	kW		rpm	rpm	Nm	CV	kW	kW

n_v: revolutions per minute of the high speed shaft [r.p.m.].

n_l: revolutions per minute of the low speed shaft [r.p.m.].

MN_l: nominal torque of the low speed shaft [Nm].

P_N: nominal power at low speed shaft [CV (horse-power)-kW]

P_t: thermal capacity [kW].

i: transmission ratio *n_v/n_l*.

Nominal power and torque ratings RS

Size	3200					Size	3200						
Ratio <i>i</i>	<i>n_v</i>	<i>n_l</i>	<i>M_{nl}</i>	<i>P_N</i>		<i>P_t</i>	Ratio <i>i</i>	<i>n_v</i>	<i>n_l</i>	<i>M_{nl}</i>	<i>P_N</i>		<i>P_t</i>
	rpm	rpm	Nm	CV	kW	kW		rpm	rpm	Nm	CV	kW	kW
45	1750	38	3240	18	13	28	112	1750	15	3240	7.1	5.3	28
	1450	32	3240	15	11			1450	13	3240	5.9	4.4	
	1000	22	3240	10	7			1000	9	3240	4.1	3	
	800	18	3240	8.1	6			800	7	3240	3.3	2.4	
	630	14	3240	6.4	4.7			630	6	3240	2.6	1.9	
	500	11	3240	5.1	3.7			500	4	3240	2	1.5	
50	1750	35	3240	16	12	28	125	1750	14	3240	6.4	4.7	28
	1450	29	3240	14	10			1450	11	3240	5.3	3.9	
	1000	20	3240	9.3	6.8			1000	8	3240	3.7	2.7	
	800	16	3240	7.5	5.5			800	6	3240	2.9	2.1	
	630	13	3240	5.9	4.3			630	5	3240	2.3	1.7	
	500	10	3240	4.7	3.4			500	4	3240	1.8	1.3	
56	1750	31	3240	14	11	28	140	1750	12	3240	5.7	4.2	28
	1450	26	3240	12	9			1450	10	3240	4.7	3.5	
	1000	18	3240	8.2	6			1000	7	3240	3.2	2.4	
	800	14	3240	6.6	4.8			800	6	3240	2.6	1.9	
	630	11	3240	5.2	3.8			630	4	3240	2	1.5	
	500	9	3240	4.1	3			500	4	3240	1.6	1.2	
63	1750	27	3240	13	9	28	160	1750	11	3240	5	3.7	28
	1450	23	3240	10	8			1450	9	3240	4.2	3.1	
	1000	16	3240	7.2	5.3			1000	6	3240	2.9	2.1	
	800	13	3240	5.8	4.3			800	5	3240	2.3	1.7	
	630	10	3240	4.6	3.3			630	4	3240	1.8	1.3	
	500	8	3240	3.6	2.7			500	3	3240	1.4	1.1	
71	1750	25	3240	12	9	28	180	1750	10	3240	4.4	3.3	28
	1450	21	3240	9.6	7.1			1450	8	3240	3.7	2.7	
	1000	14	3240	6.6	4.9			1000	5	3240	2.5	1.9	
	800	11	3240	5.3	3.9			800	4	3240	2	1.5	
	630	9	3240	4.2	3.1			630	3	3240	1.6	1.2	
	500	7	3240	3.3	2.4			500	3	3240	1.3	0.9	
80	1750	22	3240	10	7	28	200	1750	9	3240	4.1	3	28
	1450	18	3240	8.4	6.2			1450	7	3240	3.4	2.5	
	1000	13	3240	5.8	4.2			1000	5	3240	2.4	1.7	
	800	10	3240	4.6	3.4			800	4	3240	1.9	1.4	
	630	8	3240	3.6	2.7			630	3	3240	1.5	1.1	
	500	6	3240	2.9	2.1			500	3	3240	1.2	0.9	
90	1750	19	3240	8.8	6.4	28	225	1750	8	3240	3.6	2.6	28
	1450	16	3240	7.3	5.3			1450	6	3240	3	2.2	
	1000	11	3240	5	3.7			1000	4	3240	2.1	1.5	
	800	9	3240	4	2.9			800	4	3240	1.6	1.2	
	630	7	3240	3.2	2.3			630	3	3240	1.3	1	
	500	5	3240	2.5	1.8			500	2	3240	1	0.8	
100	1750	17	3240	7.9	5.8	28	250	1750	7	3240	3.1	2.3	28
	1450	14	3240	6.6	4.8			1450	6	3240	2.6	1.9	
	1000	10	3240	4.5	3.3			1000	4	3240	1.8	1.3	
	800	8	3240	3.6	2.7			800	3	3240	1.4	1.1	
	630	6	3240	2.9	2.1			630	2	3240	1.1	0.8	
	500	5	3240	2.3	1.7			500	2	3240	0.9	0.66	
Ratio <i>i</i>	<i>n_v</i>	<i>n_l</i>	<i>M_{nl}</i>	<i>P_N</i>		<i>P_t</i>	Ratio <i>i</i>	<i>n_v</i>	<i>n_l</i>	<i>M_{nl}</i>	<i>P_N</i>		<i>P_t</i>
	rpm	rpm	Nm	CV	kW	kW		rpm	rpm	Nm	CV	kW	kW

n_v: revolutions per minute of the high speed shaft [r.p.m.].

n_l: revolutions per minute of the low speed shaft [r.p.m.].

M_{nl}: nominal torque of the low speed shaft [Nm].

P_N: nominal power at low speed shaft [CV (horse-power)-kW].

P_t: thermal capacity [kW].

i: transmission ratio *n_v/n_l*.

Nominal power and torque ratings RS

Size	3200 P					Size	3200 P																																																																																																																																																																																																																																																																																																																																																																																																																										
Ratio <i>i</i>	<i>n_v</i>	<i>n_l</i>	<i>MN_l</i>	<i>P_N</i>		<i>P_t</i>	Ratio <i>i</i>	<i>n_v</i>	<i>n_l</i>	<i>MN_l</i>	<i>P_N</i>		<i>P_t</i>																																																																																																																																																																																																																																																																																																																																																																																																																				
	rpm	rpm	Nm	CV	kW	kW		rpm	rpm	Nm	CV	kW	kW																																																																																																																																																																																																																																																																																																																																																																																																																				
45	1750	38	4400	24	18	28	112	1750	15	4400	9.7	7.1	28																																																																																																																																																																																																																																																																																																																																																																																																																				
	1450	32	4400	20	15			1000	22	4400	14	10		800	18	4400	11	8	630	14	4400	8.7	6.4	500	11	4400	6.9	5.1	50	1750	35	4400	22	16	28	125	1750	14	4400	8.7	6.4	28	1450	29	4400	18	13	1000	20	4400	13	9	800	16	4400	10	7	630	13	4400	8	5.9	500	10	4400	6.3	4.7	56	1750	31	4400	20	14	28	140	1750	12	4400	7.7	5.7	28	1450	26	4400	16	12	1000	18	4400	11	8	800	14	4400	8.9	6.6	630	11	4400	7	5.2	500	9	4400	5.6	4.1	63	1750	27	4400	17	13	28	160	1750	11	4400	6.8	5	28	1450	23	4400	14	10	1000	16	4400	9.8	7.2	800	13	4400	7.8	5.8	630	10	4400	6.2	4.5	500	8	4400	4.9	3.6	71	1750	25	4400	16	12	28	180	1750	10	4400	6	4.4	28	1450	21	4400	13	10	1000	14	4400	9	6.6	800	11	4400	7.2	5.3	630	9	4400	5.7	4.2	500	7	4400	4.5	3.3	80	1750	22	4400	14	10	28	200	1750	9	4400	5.6	4.1	28	1450	18	4400	11	8	1000	13	4400	7.8	5.8	800	10	4400	6.3	4.6	630	8	4400	4.9	3.6	500	6	4400	3.9	2.9	90	1750	19	4400	12	9	28	225	1750	8	4400	4.9	3.6	28	1450	16	4400	9.9	7.3	1000	11	4400	6.8	5	800	9	4400	5.4	4	630	7	4400	4.3	3.2	500	5	4400	3.4	2.5	100	1750	17	4400	11	8	28	250	1750	7	4400	4.3	3.1	28	1450	14	4400	8.9	6.6	1000	10	4400	6.2	4.5	800	8	4400	4.9	3.6	630	6	4400	3.9	2.9	500	5	4400	3.1	2.3	Ratio <i>i</i>	<i>n_v</i>	<i>n_l</i>	<i>MN_l</i>	<i>P_N</i>		<i>P_t</i>	Ratio <i>i</i>	<i>n_v</i>	<i>n_l</i>	<i>MN_l</i>	<i>P_N</i>		<i>P_t</i>		rpm	rpm	Nm	CV	kW	kW		rpm	rpm	Nm	CV	kW	kW																																																																																								
	1000	22	4400	14	10			800	18	4400	11	8		630	14	4400	8.7	6.4	500	11	4400	6.9	5.1	50	1750	35	4400	22		16	28	125	1750	14			4400	8.7	6.4	28	1450		29	4400	18	13	1000	20	4400	13	9	800	16	4400	10	7	630	13	4400	8	5.9	500	10	4400	6.3	4.7	56		1750	31	4400	20	14			28	140	1750	12	4400		7.7	5.7	28	1450	26	4400	16	12	1000	18	4400	11	8	800	14	4400	8.9	6.6	630	11	4400	7	5.2	500	9		4400	5.6	4.1	63	1750			27	4400	17	13	28		160	1750	11	4400	6.8	5	28	1450	23	4400	14	10	1000	16	4400	9.8	7.2	800	13	4400	7.8	5.8	630	10	4400		6.2	4.5	500	8	4400			4.9	3.6	71	1750	25		4400	16	12	28	180	1750	10	4400	6	4.4	28	1450	21	4400	13	10	1000	14	4400	9	6.6	800	11	4400	7.2		5.3	630	9	4400	5.7			4.2	500	7	4400	4.5		3.3	80	1750	22	4400	14	10	28	200	1750	9	4400	5.6	4.1	28	1450	18	4400	11	8	1000	13	4400	7.8	5.8		800	10	4400	6.3	4.6			630	8	4400	4.9	3.6		500	6	4400	3.9	2.9	90	1750	19	4400	12	9	28	225	1750	8	4400	4.9	3.6	28	1450	16	4400	9.9	7.3	1000		11	4400	6.8	5	800			9	4400	5.4	4	630		7	4400	4.3	3.2	500	5	4400	3.4	2.5	100	1750	17	4400	11	8	28	250	1750	7	4400	4.3	3.1	28	1450	14	4400	8.9	6.6	1000	10	4400	6.2	4.5	800	8	4400	4.9	3.6	630	6	4400	3.9	2.9	500	5	4400	3.1	2.3	Ratio <i>i</i>	<i>n_v</i>	<i>n_l</i>	<i>MN_l</i>	<i>P_N</i>		<i>P_t</i>	Ratio <i>i</i>	<i>n_v</i>	<i>n_l</i>	<i>MN_l</i>	<i>P_N</i>		<i>P_t</i>		rpm	rpm	Nm	CV	kW	kW		rpm	rpm	Nm	CV	kW	kW																																																																	
	800	18	4400	11	8			630	14	4400	8.7	6.4		500	11	4400	6.9	5.1	50	1750	35	4400	22		16	28	125	1750		14			4400	8.7			6.4	28	1450		29		4400	18	13	1000	20	4400	13	9	800	16	4400	10	7	630	13	4400	8	5.9	500	10	4400	6.3	4.7	56			1750	31	4400	20	14					28	140	1750		12	4400		7.7	5.7	28	1450	26	4400	16	12	1000	18	4400	11	8	800	14	4400	8.9	6.6	630	11	4400	7		5.2	500	9		4400			5.6	4.1	63	1750				27	4400	17	13	28		160	1750	11	4400	6.8	5	28	1450	23	4400	14	10	1000	16	4400	9.8	7.2	800		13	4400	7.8	5.8	630			10	4400		6.2	4.5		500	8	4400			4.9	3.6	71	1750	25		4400	16	12	28	180	1750	10	4400	6	4.4	28	1450	21	4400		13	10	1000	14	4400			9	6.6	800	11	4400		7.2		5.3	630	9	4400	5.7			4.2	500	7	4400	4.5		3.3	80	1750	22	4400	14	10	28	200	1750		9	4400	5.6	4.1	28			1450	18	4400	11	8		1000	13	4400	7.8	5.8		800	10	4400	6.3	4.6			630	8	4400	4.9	3.6		500	6	4400	3.9	2.9	90		1750	19	4400	12	9			28	225	1750	8	4400		4.9	3.6	28	1450	16	4400	9.9	7.3	1000		11	4400	6.8	5	800			9	4400	5.4	4	630		7	4400	4.3	3.2	500	5	4400	3.4	2.5	100	1750	17	4400	11	8	28	250	1750	7	4400	4.3	3.1	28	1450	14	4400	8.9	6.6	1000	10	4400	6.2	4.5	800	8	4400	4.9	3.6	630	6	4400	3.9	2.9	500	5	4400	3.1	2.3	Ratio <i>i</i>	<i>n_v</i>	<i>n_l</i>	<i>MN_l</i>	<i>P_N</i>		<i>P_t</i>	Ratio <i>i</i>	<i>n_v</i>	<i>n_l</i>	<i>MN_l</i>	<i>P_N</i>		<i>P_t</i>		rpm	rpm	Nm	CV	kW	kW		rpm	rpm	Nm	CV	kW	kW																																										
	630	14	4400	8.7	6.4			500	11	4400	6.9	5.1		50	1750	35	4400	22		16	28	125	1750		14			4400		8.7			6.4	28			1450		29		4400		18	13	1000	20	4400	13	9	800	16	4400	10	7	630	13	4400	8	5.9	500	10	4400	6.3	4.7	56				1750	31	4400	20	14							28		140	1750		12	4400		7.7	5.7	28	1450	26	4400	16	12	1000	18	4400	11	8	800	14	4400	8.9	6.6	630		11	4400	7		5.2			500	9		4400				5.6	4.1	63	1750				27	4400	17	13	28		160	1750	11	4400	6.8	5	28	1450	23	4400	14		10	1000	16	4400	9.8			7.2	800		13	4400		7.8	5.8	630			10	4400		6.2	4.5		500	8	4400			4.9	3.6	71	1750	25		4400	16	12		28	180	1750	10	4400			6	4.4	28	1450	21		4400		13	10	1000	14	4400			9	6.6	800	11	4400		7.2		5.3	630	9	4400	5.7			4.2		500	7	4400	4.5				3.3	80	1750	22	4400		14	10	28	200	1750		9	4400	5.6	4.1	28			1450	18	4400	11	8		1000	13	4400	7.8	5.8			800	10	4400	6.3	4.6					630	8	4400		4.9	3.6		500	6	4400	3.9	2.9	90		1750	19	4400	12	9			28	225	1750	8	4400		4.9	3.6	28	1450	16	4400	9.9	7.3	1000		11	4400	6.8	5	800			9	4400	5.4	4	630		7	4400	4.3	3.2	500	5	4400	3.4	2.5	100	1750	17	4400	11	8	28	250	1750	7	4400	4.3	3.1	28	1450	14	4400	8.9	6.6	1000	10	4400	6.2	4.5	800	8	4400	4.9	3.6	630	6	4400	3.9	2.9	500	5	4400	3.1	2.3	Ratio <i>i</i>	<i>n_v</i>	<i>n_l</i>	<i>MN_l</i>	<i>P_N</i>		<i>P_t</i>	Ratio <i>i</i>	<i>n_v</i>	<i>n_l</i>	<i>MN_l</i>	<i>P_N</i>		<i>P_t</i>		rpm	rpm	Nm	CV	kW	kW		rpm	rpm	Nm	CV	kW	kW																			
	500	11	4400	6.9	5.1			50	1750	35	4400	22			16	28	125	1750		14			4400		8.7			6.4		28			1450				29		4400		18		13	1000	20	4400	13	9	800	16	4400	10	7	630	13	4400	8	5.9	500	10	4400	6.3	4.7	56					1750	31	4400	20	14										28		140	1750		12	4400		7.7	5.7	28	1450	26	4400	16	12	1000	18	4400	11	8	800	14	4400		8.9	6.6	630		11			4400	7		5.2				500	9		4400				5.6	4.1	63	1750				27	4400	17	13	28		160	1750	11	4400		6.8	5	28	1450	23			4400	14		10	1000		16	4400	9.8			7.2	800		13	4400		7.8	5.8	630			10	4400		6.2	4.5		500	8	4400				4.9	3.6	71			1750	25		4400	16		12		28	180	1750	10	4400			6	4.4	28	1450	21		4400		13	10	1000	14	4400			9		6.6	800	11	4400				7.2		5.3	630	9		4400	5.7			4.2		500	7	4400	4.5				3.3	80	1750	22	4400		14	10	28	200	1750			9	4400	5.6	4.1	28					1450	18	4400		11	8		1000	13	4400	7.8	5.8			800	10	4400	6.3	4.6					630	8	4400		4.9	3.6		500	6	4400	3.9	2.9	90		1750	19	4400	12	9			28	225	1750	8	4400		4.9	3.6	28	1450	16	4400	9.9	7.3	1000		11	4400	6.8	5	800			9	4400	5.4	4	630		7	4400	4.3	3.2	500	5	4400	3.4	2.5	100	1750	17	4400	11	8	28	250	1750	7	4400	4.3	3.1	28	1450	14	4400	8.9	6.6	1000	10	4400	6.2	4.5	800	8	4400	4.9	3.6	630	6	4400	3.9	2.9	500	5	4400	3.1	2.3	Ratio <i>i</i>	<i>n_v</i>	<i>n_l</i>	<i>MN_l</i>	<i>P_N</i>		<i>P_t</i>	Ratio <i>i</i>	<i>n_v</i>	<i>n_l</i>	<i>MN_l</i>	<i>P_N</i>		<i>P_t</i>		rpm	rpm	Nm	CV	kW	kW		rpm	rpm
50	1750	35	4400	22	16	28	125		1750	14	4400	8.7	6.4		28																																																																																																																																																																																																																																																																																																																																																																																																																		
	1450	29	4400	18	13				1000	20	4400	13	9					800		16			4400		10			7	630				13		4400	8	5.9		500		10	4400	6.3	4.7	56	1750	31	4400	20	14	28	140	1750	12	4400	7.7	5.7	28	1450	26	4400	16	12					1000	18	4400	11	8	800	14	4400						8.9					6.6		630	11		4400	7		5.2	500	9	4400	5.6	4.1	63	1750	27	4400	17	13	28	160	1750	11	4400		6.8	5	28	1450	23		4400		14		10	1000		16				4400	9.8		7.2				800	13	4400	7.8				5.8	630	10	4400	6.2	4.5		500	8	4400	4.9	3.6	71		1750	25	4400	16	12	28			180	1750		10	4400		6	4.4	28			1450	21		4400	13		10	1000	14	4400			9	6.6		800	11	4400	7.2		5.3	630	9	4400				5.7	4.2	500			7	4400		4.5	3.3		80		1750	22	4400	14	10			28	200	1750	9	4400	5.6		4.1	28	1450		18	4400	11	8	1000	13			4400		7.8	5.8	800	10				4400		6.3	4.6	630		8	4400			4.9		3.6	500	6	4400	3.9		2.9	90			1750	19	4400	12	9	28		225	1750	8	4400	4.9			3.6	28	1450	16	4400					9.9	7.3	1000		11	4400		6.8	5	800	9	4400			5.4	4	630	7	4400					4.3	3.2	500		5	4400		3.4	2.5	100	1750	17	4400		11	8	28	250	1750			7	4400	4.3	3.1	28		1450	14	4400	8.9	6.6	1000	10	4400	6.2		4.5	800	8	4400	4.9			3.6	630	6	4400	3.9		2.9	500	5	4400	3.1	2.3	Ratio <i>i</i>	<i>n_v</i>	<i>n_l</i>	<i>MN_l</i>	<i>P_N</i>		<i>P_t</i>	Ratio <i>i</i>	<i>n_v</i>	<i>n_l</i>	<i>MN_l</i>	<i>P_N</i>		<i>P_t</i>		rpm	rpm	Nm	CV	kW	kW		rpm	rpm	Nm	CV	kW	kW															
	1000	20	4400	13	9				800	16	4400	10	7					630		13			4400	8	5.9			500	10		4400	6.3	4.7		56	1750	31		4400	20	14	28	140	1750		12	4400	7.7	5.7	28			1450	26	4400	16	12		1000	18	4400	11	8				800	14	4400	8.9	6.6	630	11	4400	7	5.2	500				9			4400		5.6		4.1	63		1750	27		4400	17	13	28	160	1750		11	4400	6.8	5	28			1450	23	4400	14	10	1000		16	4400		9.8	7.2	800	13	4400	7.8		5.8		630		10	4400		6.2				4.5	500	8	4400				4.9	3.6	71	1750	25	4400		16	12	28	180	1750		10	4400	6	4.4	28	1450		21	4400		13		10	1000	14	4400	9				6.6	800		11	4400		7.2	5.3	630	9			4400	5.7		4.2	500	7	4400		4.5	3.3	80	1750	22			4400	14	10	28	200	1750	9		4400	5.6	4.1			28	1450	18	4400	11					8	1000	13	4400		7.8		5.8		800	10	4400	6.3	4.6	630			8	4400	4.9	3.6	500	6		4400	3.9	2.9		90	1750	19	4400	12	9			28		225	1750	8	4400	4.9		3.6				28	1450	16	4400	9.9				7.3	1000	11	4400		6.8	5		800	9	4400	5.4	4			630	7	4400	4.3	3.2	500		5	4400	3.4	2.5	100			1750	17	4400	11	8					28	250	1750		7	4400		4.3	3.1		28	1450	14		4400	8.9			6.6			1000	10	4400	6.2			4.5	800	8	4400	4.9	3.6	630	6	4400		3.9	2.9	500	5	4400			3.1	2.3	Ratio <i>i</i>	<i>n_v</i>	<i>n_l</i>		<i>MN_l</i>	<i>P_N</i>		<i>P_t</i>	Ratio <i>i</i>	<i>n_v</i>	<i>n_l</i>	<i>MN_l</i>	<i>P_N</i>		<i>P_t</i>		rpm	rpm	Nm	CV	kW	kW		rpm	rpm	Nm	CV	kW	kW																								
	800	16	4400	10	7				630	13	4400	8	5.9					500	10	4400			6.3	4.7	56	1750	31	4400	20		14	28	140			1750	12	4400	7.7	5.7	28			1450		26	4400	16	12				1000	18	4400	11	8		800	14	4400	8.9	6.6			630	11	4400	7	5.2	500	9	4400	5.6	4.1	63	1750	27	4400		17			13		28	160	1750			11	4400		6.8	5	28			1450		23	4400	14	10				1000	16	4400	9.8	7.2	800		13	4400	7.8	5.8	630	10	4400	6.2	4.5		500	8	4400	4.9	3.6	71		1750		25		4400	16	12	28				180	1750		10	4400	6		4.4	28			1450		21	4400	13	10		1000		14	4400		9	6.6	800	11	4400	7.2	5.3		630	9	4400	5.7		4.2	500	7	4400	4.5	3.3	80			1750	22		4400	14	10	28		200	1750		9	4400			5.6	4.1	28			1450	18		4400	11	8		1000		13	4400	7.8	5.8	800	10			4400	6.3	4.6	630	8	4400		4.9		3.6	500	6	4400	3.9	2.9			90	1750	19	4400	12	9		28	225	1750			8	4400	4.9	3.6	28				1450		16	4400	9.9	7.3		1000		11	4400		6.8	5	800	9		4400		5.4	4	630	7		4400	4.3		3.2	500	5	4400	3.4			2.5	100	1750	17	4400	11		8	28	250	1750			7	4400	4.3	3.1	28	1450	14	4400					8.9	6.6	1000	10		4400	6.2			4.5	800		8	4400			4.9			3.6	630	6	4400			3.9	2.9	500	5	4400	3.1	2.3	Ratio <i>i</i>	<i>n_v</i>		<i>n_l</i>	<i>MN_l</i>	<i>P_N</i>		<i>P_t</i>			Ratio <i>i</i>	<i>n_v</i>	<i>n_l</i>	<i>MN_l</i>	<i>P_N</i>		<i>P_t</i>		rpm	rpm	Nm	CV	kW	kW		rpm	rpm	Nm	CV	kW	kW																																		
	630	13	4400	8	5.9				500	10	4400	6.3	4.7	56				1750	31	4400	20	14	28	140		1750	12	4400	7.7		5.7			28		1450	26	4400	16	12				1000		18	4400	11	8				800	14	4400	8.9	6.6		630	11	4400	7	5.2		500	9	4400	5.6	4.1	63	1750	27	4400	17	13		28	160	1750	11	4400	6.8		5				28		1450	23	4400		14	10				1000		16	4400	9.8	7.2				800	13	4400	7.8	5.8	630		10	4400	6.2	4.5	500	8	4400	4.9	3.6	71	1750	25	4400	16	12			28	180	1750	10	4400	6	4.4			28			1450		21	4400	13		10				1000		14	4400	9	6.6		800		11	4400		7.2	5.3	630	9	4400	5.7	4.2		500	7	4400	4.5	3.3	80	1750	22	4400	14	10		28	200	1750	9		4400	5.6	4.1		28		1450		18	4400			11	8				1000	13		4400	7.8	5.8		800		10	4400	6.3	4.6	630	8			4400	4.9	3.6	500	6	4400		3.9	2.9	90	1750	19	4400	12	9	28	225		1750	8	4400	4.9	3.6	28			1450			16	4400	9.9	7.3					1000		11	4400	6.8	5		800		9	4400		5.4	4	630	7		4400		4.3	3.2	500	5	4400	3.4	2.5		100	1750	17	4400	11	8	28	250		1750	7	4400	4.3	3.1	28			1450			14	4400	8.9	6.6		1000	10	4400					6.2	4.5	800	8		4400	4.9			3.6	630	6	4400	3.9			2.9	500	5	4400	3.1	2.3	Ratio <i>i</i>		<i>n_v</i>	<i>n_l</i>	<i>MN_l</i>	<i>P_N</i>		<i>P_t</i>	Ratio <i>i</i>	<i>n_v</i>	<i>n_l</i>	<i>MN_l</i>		<i>P_N</i>		<i>P_t</i>		rpm			rpm	Nm	CV	kW	kW			rpm	rpm	Nm	CV	kW	kW																																										
	500	10	4400	6.3	4.7			56	1750	31	4400	20	14			28	140	1750	12	4400	7.7	5.7				28	1450	26	4400	16	12					1000	18	4400	11	8				800		14	4400	8.9	6.6				630	11	4400	7	5.2		500	9	4400	5.6	4.1	63	1750	27	4400	17	13		28	160	1750	11	4400				6.8	5	28	1450	23	4400	14					10	1000	16	4400	9.8	7.2				800		13	4400	7.8	5.8				630	10	4400	6.2	4.5	500		8	4400	4.9	3.6	71	1750	25	4400	16		12	28	180	1750	10		4400			6	4.4	28	1450	21		4400		13		10		1000	14	4400	9	6.6				800		11	4400	7.2	5.3		630		9	4400		5.7	4.2	500	7	4400	4.5	3.3		80	1750	22	4400	14		10	28	200	1750	9				4400	5.6	4.1	28	1450	18				4400		11	8	1000	13	4400	7.8				5.8	800	10	4400	6.3	4.6		630		8	4400	4.9	3.6	500	6			4400	3.9	2.9	90	1750	19		4400	12		9	28	225	1750	8				4400	4.9	3.6	28	1450				16	4400		9.9	7.3	1000	11		4400	6.8		5		800	9	4400	5.4	4	630		7	4400		4.3	3.2	500	5		4400		3.4	2.5	100	1750	17	4400	11			8	28	250	1750	7				4400	4.3	3.1	28	1450				14		4400	8.9	6.6	1000	10		4400	6.2	4.5	800	8			4400	4.9	3.6	630	6	4400	3.9			2.9	500	5	4400	3.1			2.3	Ratio <i>i</i>	<i>n_v</i>	<i>n_l</i>	<i>MN_l</i>	<i>P_N</i>			<i>P_t</i>	Ratio <i>i</i>	<i>n_v</i>	<i>n_l</i>	<i>MN_l</i>	<i>P_N</i>		<i>P_t</i>		rpm	rpm	Nm	CV	kW	kW		rpm	rpm	Nm	CV	kW	kW																																																			
56	1750	31	4400	20	14	28	140		1750	12	4400	7.7	5.7		28																																																																																																																																																																																																																																																																																																																																																																																																																		
	1450	26	4400	16	12				1000	18	4400	11	8					800	14	4400	8.9	6.6					630	11	4400	7	5.2					500	9	4400	5.6	4.1				63	1750	27	4400	17	13		28	160	1750	11	4400	6.8	5	28	1450	23	4400	14	10		1000	16	4400	9.8	7.2				800	13	4400				7.8	5.8		630	10	4400	6.2					4.5	500	8	4400	4.9	3.6				71	1750	25	4400	16	12		28	180	1750	10	4400	6	4.4	28	1450	21	4400	13	10		1000	14	4400	9		6.6			800	11		4400			7.2	5.3		630	9		4400		5.7		4.2		500	7	4400	4.5	3.3				80	1750	22	4400	14	10		28	200	1750	9	4400	5.6	4.1	28	1450	18	4400	11	8		1000	13	4400	7.8		5.8			800	10				4400	6.3	4.6		630	8				4400		4.9	3.6	500	6	4400	3.9				2.9	90	1750	19	4400	12	9	28		225	1750	8	4400	4.9	3.6	28	1450	16	4400	9.9		7.3	1000	11	4400	6.8		5			800	9				4400	5.4	4		630				7	4400		4.3	3.2	500	5		4400	3.4		2.5		100	1750	17	4400	11	8	28	250	1750		7	4400	4.3	3.1	28	1450	14	4400	8.9		6.6	1000	10	4400	6.2		4.5			800	8				4400	4.9	3.6		630				6		4400	3.9	2.9	500	5		4400	3.1	2.3	Ratio <i>i</i>	<i>n_v</i>			<i>n_l</i>	<i>MN_l</i>	<i>P_N</i>		<i>P_t</i>	Ratio <i>i</i>	<i>n_v</i>	<i>n_l</i>		<i>MN_l</i>	<i>P_N</i>		<i>P_t</i>		rpm	rpm	Nm	CV	kW	kW		rpm	rpm	Nm	CV	kW	kW																																																																						
	1000	18	4400	11	8				800	14	4400	8.9	6.6					630	11	4400	7	5.2					500	9	4400	5.6	4.1				63	1750	27	4400	17	13		28	160		1750	11	4400	6.8	5	28			1450	23	4400	14	10		1000	16	4400	9.8	7.2		800	13	4400	7.8	5.8				630	10	4400				6.2	4.5		500	8	4400	4.9				3.6	71	1750	25	4400	16	12		28	180		1750	10	4400	6	4.4	28			1450	21	4400	13	10		1000	14	4400	9	6.6		800	11	4400	7.2		5.3			630	9		4400			5.7	4.2		500	7		4400		4.5		3.3	80	1750	22	4400	14	10		28	200		1750	9	4400	5.6	4.1	28			1450	18	4400	11	8		1000	13	4400	7.8	5.8		800	10	4400	6.3		4.6			630	8				4400	4.9	3.6		500	6				4400	3.9	2.9	90	1750	19	4400	12		9	28	225		1750	8	4400	4.9	3.6		28		1450	16	4400	9.9	7.3		1000	11	4400	6.8		5	800	9	4400	5.4		4			630	7				4400	4.3	3.2		500				5	4400	3.4	2.5	100	1750	17		4400	11	8	28	250		1750	7	4400	4.3	3.1			28	1450	14	4400	8.9	6.6		1000	10	4400	6.2		4.5	800	8	4400	4.9		3.6			630	6				4400	3.9	2.9		500				5	4400	3.1	2.3	Ratio <i>i</i>	<i>n_v</i>	<i>n_l</i>		<i>MN_l</i>	<i>P_N</i>		<i>P_t</i>	Ratio <i>i</i>	<i>n_v</i>	<i>n_l</i>	<i>MN_l</i>	<i>P_N</i>		<i>P_t</i>		rpm	rpm	Nm	CV	kW	kW		rpm	rpm	Nm	CV	kW	kW																																																																															
	800	14	4400	8.9	6.6				630	11	4400	7	5.2					500	9	4400	5.6	4.1			63		1750	27	4400	17	13	28	160			1750	11	4400	6.8	5	28				1450	23	4400	14	10				1000	16	4400	9.8	7.2		800	13	4400	7.8	5.8		630	10	4400	6.2	4.5				500	8	4400	4.9			3.6	71		1750	25	4400	16	12	28		180		1750	10	4400	6	4.4	28				1450	21	4400	13	10				1000	14	4400	9	6.6		800	11	4400	7.2	5.3		630	9	4400	5.7		4.2			500	7	4400	4.5			3.3	80		1750	22	4400	14		10	28	200		1750	9	4400	5.6	4.1	28				1450	18	4400	11	8				1000	13	4400	7.8	5.8		800	10	4400	6.3	4.6		630	8	4400	4.9		3.6			500	6	4400			3.9	2.9	90		1750	19	4400		12	9	28	225		1750	8	4400	4.9	3.6	28				1450	16	4400	9.9	7.3				1000	11	4400	6.8	5		800	9	4400	5.4		4	630	7	4400	4.3		3.2			500	5			4400	3.4	2.5	100		1750		17	4400	11	8	28	250		1750	7	4400	4.3	3.1	28				1450	14	4400	8.9	6.6				1000	10	4400	6.2	4.5		800	8	4400	4.9		3.6	630	6	4400	3.9		2.9			500	5			4400	3.1	2.3	Ratio <i>i</i>		<i>n_v</i>		<i>n_l</i>	<i>MN_l</i>	<i>P_N</i>		<i>P_t</i>	Ratio <i>i</i>	<i>n_v</i>	<i>n_l</i>	<i>MN_l</i>	<i>P_N</i>		<i>P_t</i>		rpm	rpm	Nm	CV	kW	kW		rpm	rpm	Nm	CV	kW	kW																																																																																								
	630	11	4400	7	5.2				500	9	4400	5.6	4.1	63				1750	27	4400	17	13	28	160			1750	11	4400	6.8	5			28		1450	23	4400	14	10					1000	16	4400	9.8	7.2				800	13	4400	7.8	5.8		630	10	4400	6.2	4.5		500	8	4400	4.9	3.6	71			1750	25	4400	16	12	28	180			1750	10	4400	6	4.4		28			1450	21	4400	13	10					1000	14	4400	9	6.6				800	11	4400	7.2	5.3		630	9	4400	5.7	4.2		500	7	4400	4.5	3.3	80			1750	22	4400	14	10	28	200			1750	9	4400	5.6	4.1	28				1450	18	4400	11	8					1000	13	4400	7.8	5.8				800	10	4400	6.3	4.6		630	8	4400	4.9	3.6		500	6	4400	3.9	2.9	90			1750	19	4400	12	9	28	225			1750	8	4400	4.9	3.6	28				1450	16	4400	9.9	7.3					1000	11	4400	6.8	5				800	9	4400	5.4	4		630	7	4400	4.3		3.2	500	5	4400	3.4	2.5	100			1750	17	4400	11	8	28	250			1750	7	4400	4.3	3.1	28				1450	14	4400	8.9	6.6					1000	10	4400	6.2	4.5				800	8	4400	4.9	3.6		630	6	4400	3.9		2.9	500	5	4400	3.1	2.3	Ratio <i>i</i>			<i>n_v</i>	<i>n_l</i>	<i>MN_l</i>	<i>P_N</i>		<i>P_t</i>	Ratio <i>i</i>	<i>n_v</i>		<i>n_l</i>	<i>MN_l</i>	<i>P_N</i>		<i>P_t</i>		rpm	rpm	Nm	CV	kW	kW		rpm	rpm	Nm	CV	kW	kW																																																																																																	
	500	9	4400	5.6	4.1			63	1750	27	4400	17	13			28	160	1750	11	4400	6.8	5				28	1450	23	4400	14	10					1000	16	4400	9.8	7.2					800	13	4400	7.8	5.8				630	10	4400	6.2	4.5		500	8	4400	4.9	3.6	71	1750	25	4400	16	12		28	180	1750	10	4400	6	4.4				28	1450	21	4400	13	10					1000	14	4400	9	6.6					800	11	4400	7.2	5.3				630	9	4400	5.7	4.2		500	7	4400	4.5	3.3	80	1750	22	4400	14	10		28	200	1750	9	4400	5.6	4.1				28	1450	18	4400	11	8					1000	13	4400	7.8	5.8					800	10	4400	6.3	4.6				630	8	4400	4.9	3.6		500	6	4400	3.9	2.9	90	1750	19	4400	12	9		28	225	1750	8	4400	4.9	3.6				28	1450	16	4400	9.9	7.3					1000	11	4400	6.8	5					800	9	4400	5.4	4				630	7	4400	4.3	3.2		500	5	4400	3.4	2.5	100	1750	17	4400	11	8		28	250	1750	7	4400	4.3	3.1				28	1450	14	4400	8.9	6.6					1000	10	4400	6.2	4.5					800	8	4400	4.9	3.6				630	6	4400	3.9	2.9		500	5	4400	3.1	2.3	Ratio <i>i</i>	<i>n_v</i>	<i>n_l</i>	<i>MN_l</i>	<i>P_N</i>		<i>P_t</i>	Ratio <i>i</i>	<i>n_v</i>	<i>n_l</i>	<i>MN_l</i>	<i>P_N</i>		<i>P_t</i>		rpm	rpm	Nm	CV	kW	kW		rpm	rpm	Nm	CV	kW	kW																																																																																																										
63	1750	27	4400	17	13	28	160		1750	11	4400	6.8	5		28																																																																																																																																																																																																																																																																																																																																																																																																																		
	1450	23	4400	14	10				1000	16	4400	9.8	7.2					800	13	4400	7.8	5.8					630	10	4400	6.2	4.5					500	8	4400	4.9	3.6				71	1750	25	4400	16	12		28	180	1750	10	4400	6	4.4	28	1450	21	4400	13	10		1000	14	4400	9	6.6				800	11	4400	7.2	5.3					630	9	4400	5.7	4.2					500	7	4400	4.5	3.3				80	1750	22	4400	14	10		28	200	1750	9	4400	5.6	4.1	28	1450	18	4400	11	8		1000	13	4400	7.8	5.8				800	10	4400	6.3	4.6					630	8	4400	4.9	3.6					500	6	4400	3.9	2.9				90	1750	19	4400	12	9		28	225	1750	8	4400	4.9	3.6	28	1450	16	4400	9.9	7.3		1000	11	4400	6.8	5				800	9	4400	5.4	4					630	7	4400	4.3	3.2					500	5	4400	3.4	2.5				100	1750	17	4400	11	8	28		250	1750	7	4400	4.3	3.1	28	1450	14	4400	8.9	6.6		1000	10	4400	6.2	4.5				800	8	4400	4.9	3.6					630	6	4400	3.9	2.9					500	5	4400	3.1	2.3				Ratio <i>i</i>	<i>n_v</i>	<i>n_l</i>	<i>MN_l</i>	<i>P_N</i>		<i>P_t</i>	Ratio <i>i</i>		<i>n_v</i>	<i>n_l</i>	<i>MN_l</i>	<i>P_N</i>		<i>P_t</i>		rpm	rpm	Nm	CV	kW	kW		rpm	rpm	Nm	CV	kW	kW																																																																																																																													
	1000	16	4400	9.8	7.2				800	13	4400	7.8	5.8					630	10	4400	6.2	4.5					500	8	4400	4.9	3.6				71	1750	25	4400	16	12		28	180		1750	10	4400	6	4.4	28			1450	21	4400	13	10		1000	14	4400	9	6.6		800	11	4400	7.2	5.3				630	9	4400	5.7	4.2					500	7	4400	4.5	3.3				80	1750	22	4400	14	10		28	200		1750	9	4400	5.6	4.1	28			1450	18	4400	11	8		1000	13	4400	7.8	5.8		800	10	4400	6.3	4.6				630	8	4400	4.9	3.6					500	6	4400	3.9	2.9				90	1750	19	4400	12	9		28	225		1750	8	4400	4.9	3.6	28			1450	16	4400	9.9	7.3		1000	11	4400	6.8	5		800	9	4400	5.4	4				630	7	4400	4.3	3.2					500	5	4400	3.4	2.5				100	1750	17	4400	11	8		28	250		1750	7	4400	4.3	3.1		28		1450	14	4400	8.9	6.6		1000	10	4400	6.2	4.5		800	8	4400	4.9	3.6				630	6	4400	3.9	2.9					500	5	4400	3.1	2.3				Ratio <i>i</i>	<i>n_v</i>	<i>n_l</i>	<i>MN_l</i>	<i>P_N</i>			<i>P_t</i>	Ratio <i>i</i>	<i>n_v</i>	<i>n_l</i>	<i>MN_l</i>	<i>P_N</i>		<i>P_t</i>		rpm	rpm	Nm	CV	kW	kW		rpm	rpm	Nm	CV	kW	kW																																																																																																																																						
	800	13	4400	7.8	5.8				630	10	4400	6.2	4.5					500	8	4400	4.9	3.6			71		1750	25	4400	16	12	28	180			1750	10	4400	6	4.4	28				1450	21	4400	13	10				1000	14	4400	9	6.6		800	11	4400	7.2	5.3		630	9	4400	5.7	4.2				500	7	4400	4.5	3.3			80		1750	22	4400	14	10	28		200		1750	9	4400	5.6	4.1	28				1450	18	4400	11	8				1000	13	4400	7.8	5.8		800	10	4400	6.3	4.6		630	8	4400	4.9	3.6				500	6	4400	3.9	2.9			90		1750	19	4400	12	9		28	225		1750	8	4400	4.9	3.6	28				1450	16	4400	9.9	7.3				1000	11	4400	6.8	5		800	9	4400	5.4	4		630	7	4400	4.3	3.2				500	5	4400	3.4	2.5			100		1750	17	4400	11	8		28	250		1750	7	4400	4.3	3.1	28				1450	14	4400	8.9	6.6				1000	10	4400	6.2	4.5		800	8	4400	4.9	3.6		630	6	4400	3.9	2.9				500	5	4400	3.1	2.3			Ratio <i>i</i>		<i>n_v</i>	<i>n_l</i>	<i>MN_l</i>	<i>P_N</i>			<i>P_t</i>	Ratio <i>i</i>	<i>n_v</i>	<i>n_l</i>	<i>MN_l</i>	<i>P_N</i>		<i>P_t</i>		rpm	rpm	Nm	CV	kW	kW		rpm	rpm	Nm	CV	kW	kW																																																																																																																																															
	630	10	4400	6.2	4.5				500	8	4400	4.9	3.6	71				1750	25	4400	16	12	28	180			1750	10	4400	6	4.4			28		1450	21	4400	13	10					1000	14	4400	9	6.6				800	11	4400	7.2	5.3		630	9	4400	5.7	4.2		500	7	4400	4.5	3.3	80			1750	22	4400	14	10	28	200			1750	9	4400	5.6	4.1		28			1450	18	4400	11	8					1000	13	4400	7.8	5.8				800	10	4400	6.3	4.6		630	8	4400	4.9	3.6		500	6	4400	3.9	2.9	90			1750	19	4400	12	9	28	225			1750	8	4400	4.9	3.6	28				1450	16	4400	9.9	7.3					1000	11	4400	6.8	5				800	9	4400	5.4	4		630	7	4400	4.3	3.2		500	5	4400	3.4	2.5	100			1750	17	4400	11	8	28	250			1750	7	4400	4.3	3.1	28				1450	14	4400	8.9	6.6					1000	10	4400	6.2	4.5				800	8	4400	4.9	3.6		630	6	4400	3.9	2.9		500	5	4400	3.1	2.3	Ratio <i>i</i>			<i>n_v</i>	<i>n_l</i>	<i>MN_l</i>	<i>P_N</i>		<i>P_t</i>	Ratio <i>i</i>	<i>n_v</i>		<i>n_l</i>	<i>MN_l</i>	<i>P_N</i>		<i>P_t</i>		rpm	rpm	Nm	CV	kW	kW		rpm	rpm	Nm	CV	kW	kW																																																																																																																																																								
	500	8	4400	4.9	3.6			71	1750	25	4400	16	12			28	180	1750	10	4400	6	4.4				28	1450	21	4400	13	10					1000	14	4400	9	6.6					800	11	4400	7.2	5.3				630	9	4400	5.7	4.2		500	7	4400	4.5	3.3	80	1750	22	4400	14	10		28	200	1750	9	4400	5.6	4.1				28	1450	18	4400	11	8					1000	13	4400	7.8	5.8					800	10	4400	6.3	4.6				630	8	4400	4.9	3.6		500	6	4400	3.9	2.9	90	1750	19	4400	12	9		28	225	1750	8	4400	4.9	3.6				28	1450	16	4400	9.9	7.3					1000	11	4400	6.8	5					800	9	4400	5.4	4				630	7	4400	4.3	3.2		500	5	4400	3.4	2.5	100	1750	17	4400	11	8		28	250	1750	7	4400	4.3	3.1				28	1450	14	4400	8.9	6.6					1000	10	4400	6.2	4.5					800	8	4400	4.9	3.6				630	6	4400	3.9	2.9		500	5	4400	3.1	2.3	Ratio <i>i</i>	<i>n_v</i>	<i>n_l</i>	<i>MN_l</i>	<i>P_N</i>		<i>P_t</i>	Ratio <i>i</i>	<i>n_v</i>	<i>n_l</i>	<i>MN_l</i>	<i>P_N</i>		<i>P_t</i>		rpm	rpm	Nm	CV	kW	kW		rpm	rpm	Nm	CV	kW	kW																																																																																																																																																																	
71	1750	25	4400	16	12	28	180		1750	10	4400	6	4.4		28																																																																																																																																																																																																																																																																																																																																																																																																																		
	1450	21	4400	13	10				1000	14	4400	9	6.6					800	11	4400	7.2	5.3					630	9	4400	5.7	4.2					500	7	4400	4.5	3.3				80	1750	22	4400	14	10		28	200	1750	9	4400	5.6	4.1	28	1450	18	4400	11	8		1000	13	4400	7.8	5.8				800	10	4400	6.3	4.6					630	8	4400	4.9	3.6					500	6	4400	3.9	2.9				90	1750	19	4400	12	9		28	225	1750	8	4400	4.9	3.6	28	1450	16	4400	9.9	7.3		1000	11	4400	6.8	5				800	9	4400	5.4	4					630	7	4400	4.3	3.2					500	5	4400	3.4	2.5				100	1750	17	4400	11	8		28	250	1750	7	4400	4.3	3.1	28	1450	14	4400	8.9	6.6		1000	10	4400	6.2	4.5				800	8	4400	4.9	3.6					630	6	4400	3.9	2.9					500	5	4400	3.1	2.3				Ratio <i>i</i>	<i>n_v</i>	<i>n_l</i>	<i>MN_l</i>	<i>P_N</i>		<i>P_t</i>		Ratio <i>i</i>	<i>n_v</i>	<i>n_l</i>	<i>MN_l</i>	<i>P_N</i>		<i>P_t</i>		rpm	rpm	Nm	CV	kW	kW		rpm	rpm	Nm	CV	kW	kW																																																																																																																																																																																				
	1000	14	4400	9	6.6				800	11	4400	7.2	5.3					630	9	4400	5.7	4.2					500	7	4400	4.5	3.3				80	1750	22	4400	14	10		28	200		1750	9	4400	5.6	4.1	28			1450	18	4400	11	8		1000	13	4400	7.8	5.8		800	10	4400	6.3	4.6				630	8	4400	4.9	3.6					500	6	4400	3.9	2.9				90	1750	19	4400	12	9		28	225		1750	8	4400	4.9	3.6	28			1450	16	4400	9.9	7.3		1000	11	4400	6.8	5		800	9	4400	5.4	4				630	7	4400	4.3	3.2					500	5	4400	3.4	2.5				100	1750	17	4400	11	8		28	250		1750	7	4400	4.3	3.1	28			1450	14	4400	8.9	6.6		1000	10	4400	6.2	4.5		800	8	4400	4.9	3.6				630	6	4400	3.9	2.9					500	5	4400	3.1	2.3				Ratio <i>i</i>	<i>n_v</i>	<i>n_l</i>	<i>MN_l</i>	<i>P_N</i>			<i>P_t</i>	Ratio <i>i</i>	<i>n_v</i>	<i>n_l</i>	<i>MN_l</i>	<i>P_N</i>		<i>P_t</i>		rpm	rpm	Nm	CV	kW	kW		rpm	rpm	Nm	CV	kW	kW																																																																																																																																																																																													
	800	11	4400	7.2	5.3				630	9	4400	5.7	4.2					500	7	4400	4.5	3.3			80		1750	22	4400	14	10	28	200			1750	9	4400	5.6	4.1	28				1450	18	4400	11	8				1000	13	4400	7.8	5.8		800	10	4400	6.3	4.6		630	8	4400	4.9	3.6				500	6	4400	3.9	2.9			90		1750	19	4400	12	9	28		225		1750	8	4400	4.9	3.6	28				1450	16	4400	9.9	7.3				1000	11	4400	6.8	5		800	9	4400	5.4	4		630	7	4400	4.3	3.2				500	5	4400	3.4	2.5			100		1750	17	4400	11	8		28	250		1750	7	4400	4.3	3.1	28				1450	14	4400	8.9	6.6				1000	10	4400	6.2	4.5		800	8	4400	4.9	3.6		630	6	4400	3.9	2.9				500	5	4400	3.1	2.3			Ratio <i>i</i>		<i>n_v</i>	<i>n_l</i>	<i>MN_l</i>	<i>P_N</i>			<i>P_t</i>	Ratio <i>i</i>	<i>n_v</i>	<i>n_l</i>	<i>MN_l</i>	<i>P_N</i>		<i>P_t</i>		rpm	rpm	Nm	CV	kW	kW		rpm	rpm	Nm	CV	kW	kW																																																																																																																																																																																																						
	630	9	4400	5.7	4.2				500	7	4400	4.5	3.3	80				1750	22	4400	14	10	28	200			1750	9	4400	5.6	4.1			28		1450	18	4400	11	8					1000	13	4400	7.8	5.8				800	10	4400	6.3	4.6		630	8	4400	4.9	3.6		500	6	4400	3.9	2.9	90			1750	19	4400	12	9	28	225			1750	8	4400	4.9	3.6		28			1450	16	4400	9.9	7.3					1000	11	4400	6.8	5				800	9	4400	5.4	4		630	7	4400	4.3	3.2		500	5	4400	3.4	2.5	100			1750	17	4400	11	8	28	250			1750	7	4400	4.3	3.1	28				1450	14	4400	8.9	6.6					1000	10	4400	6.2	4.5				800	8	4400	4.9	3.6		630	6	4400	3.9	2.9		500	5	4400	3.1	2.3	Ratio <i>i</i>			<i>n_v</i>	<i>n_l</i>	<i>MN_l</i>	<i>P_N</i>		<i>P_t</i>	Ratio <i>i</i>	<i>n_v</i>		<i>n_l</i>	<i>MN_l</i>	<i>P_N</i>		<i>P_t</i>		rpm	rpm	Nm	CV	kW	kW		rpm	rpm	Nm	CV	kW	kW																																																																																																																																																																																																															
	500	7	4400	4.5	3.3			80	1750	22	4400	14	10			28	200	1750	9	4400	5.6	4.1				28	1450	18	4400	11	8					1000	13	4400	7.8	5.8					800	10	4400	6.3	4.6				630	8	4400	4.9	3.6		500	6	4400	3.9	2.9	90	1750	19	4400	12	9		28	225	1750	8	4400	4.9	3.6				28	1450	16	4400	9.9	7.3					1000	11	4400	6.8	5					800	9	4400	5.4	4				630	7	4400	4.3	3.2		500	5	4400	3.4	2.5	100	1750	17	4400	11	8		28	250	1750	7	4400	4.3	3.1				28	1450	14	4400	8.9	6.6					1000	10	4400	6.2	4.5					800	8	4400	4.9	3.6				630	6	4400	3.9	2.9		500	5	4400	3.1	2.3	Ratio <i>i</i>	<i>n_v</i>	<i>n_l</i>	<i>MN_l</i>	<i>P_N</i>		<i>P_t</i>	Ratio <i>i</i>	<i>n_v</i>	<i>n_l</i>	<i>MN_l</i>	<i>P_N</i>		<i>P_t</i>		rpm	rpm	Nm	CV	kW	kW		rpm	rpm	Nm	CV	kW	kW																																																																																																																																																																																																																								
80	1750	22	4400	14	10	28	200		1750	9	4400	5.6	4.1		28																																																																																																																																																																																																																																																																																																																																																																																																																		
	1450	18	4400	11	8				1000	13	4400	7.8	5.8					800	10	4400	6.3	4.6					630	8	4400	4.9	3.6					500	6	4400	3.9	2.9				90	1750	19	4400	12	9		28	225	1750	8	4400	4.9	3.6	28	1450	16	4400	9.9	7.3		1000	11	4400	6.8	5				800	9	4400	5.4	4					630	7	4400	4.3	3.2					500	5	4400	3.4	2.5				100	1750	17	4400	11	8		28	250	1750	7	4400	4.3	3.1	28	1450	14	4400	8.9	6.6		1000	10	4400	6.2	4.5				800	8	4400	4.9	3.6					630	6	4400	3.9	2.9					500	5	4400	3.1	2.3				Ratio <i>i</i>	<i>n_v</i>	<i>n_l</i>	<i>MN_l</i>	<i>P_N</i>			<i>P_t</i>	Ratio <i>i</i>	<i>n_v</i>	<i>n_l</i>	<i>MN_l</i>	<i>P_N</i>		<i>P_t</i>		rpm	rpm	Nm	CV	kW	kW		rpm	rpm	Nm	CV	kW	kW																																																																																																																																																																																																																																											
	1000	13	4400	7.8	5.8				800	10	4400	6.3	4.6					630	8	4400	4.9	3.6					500	6	4400	3.9	2.9				90	1750	19	4400	12	9		28	225		1750	8	4400	4.9	3.6	28			1450	16	4400	9.9	7.3		1000	11	4400	6.8	5		800	9	4400	5.4	4				630	7	4400	4.3	3.2					500	5	4400	3.4	2.5				100	1750	17	4400	11	8		28	250		1750	7	4400	4.3	3.1	28			1450	14	4400	8.9	6.6		1000	10	4400	6.2	4.5		800	8	4400	4.9	3.6				630	6	4400	3.9	2.9					500	5	4400	3.1	2.3				Ratio <i>i</i>	<i>n_v</i>	<i>n_l</i>	<i>MN_l</i>	<i>P_N</i>			<i>P_t</i>	Ratio <i>i</i>	<i>n_v</i>	<i>n_l</i>	<i>MN_l</i>	<i>P_N</i>		<i>P_t</i>		rpm	rpm	Nm	CV	kW	kW		rpm	rpm	Nm	CV	kW	kW																																																																																																																																																																																																																																																				
	800	10	4400	6.3	4.6				630	8	4400	4.9	3.6					500	6	4400	3.9	2.9			90		1750	19	4400	12	9	28	225			1750	8	4400	4.9	3.6	28				1450	16	4400	9.9	7.3				1000	11	4400	6.8	5		800	9	4400	5.4	4		630	7	4400	4.3	3.2				500	5	4400	3.4	2.5			100		1750	17	4400	11	8	28		250		1750	7	4400	4.3	3.1	28				1450	14	4400	8.9	6.6				1000	10	4400	6.2	4.5		800	8	4400	4.9	3.6		630	6	4400	3.9	2.9				500	5	4400	3.1	2.3			Ratio <i>i</i>		<i>n_v</i>	<i>n_l</i>	<i>MN_l</i>	<i>P_N</i>			<i>P_t</i>	Ratio <i>i</i>	<i>n_v</i>	<i>n_l</i>	<i>MN_l</i>	<i>P_N</i>		<i>P_t</i>		rpm	rpm	Nm	CV	kW	kW		rpm	rpm	Nm	CV	kW	kW																																																																																																																																																																																																																																																													
	630	8	4400	4.9	3.6				500	6	4400	3.9	2.9	90				1750	19	4400	12	9	28	225			1750	8	4400	4.9	3.6			28		1450	16	4400	9.9	7.3					1000	11	4400	6.8	5				800	9	4400	5.4	4		630	7	4400	4.3	3.2		500	5	4400	3.4	2.5	100			1750	17	4400	11	8	28	250			1750	7	4400	4.3	3.1		28			1450	14	4400	8.9	6.6					1000	10	4400	6.2	4.5				800	8	4400	4.9	3.6		630	6	4400	3.9	2.9		500	5	4400	3.1	2.3	Ratio <i>i</i>			<i>n_v</i>	<i>n_l</i>	<i>MN_l</i>	<i>P_N</i>		<i>P_t</i>	Ratio <i>i</i>	<i>n_v</i>		<i>n_l</i>	<i>MN_l</i>	<i>P_N</i>		<i>P_t</i>		rpm	rpm	Nm	CV	kW	kW		rpm	rpm	Nm	CV	kW	kW																																																																																																																																																																																																																																																																						
	500	6	4400	3.9	2.9			90	1750	19	4400	12	9			28	225	1750	8	4400	4.9	3.6				28	1450	16	4400	9.9	7.3					1000	11	4400	6.8	5					800	9	4400	5.4	4				630	7	4400	4.3	3.2		500	5	4400	3.4	2.5	100	1750	17	4400	11	8		28	250	1750	7	4400	4.3	3.1				28	1450	14	4400	8.9	6.6					1000	10	4400	6.2	4.5					800	8	4400	4.9	3.6				630	6	4400	3.9	2.9		500	5	4400	3.1	2.3	Ratio <i>i</i>	<i>n_v</i>	<i>n_l</i>	<i>MN_l</i>	<i>P_N</i>		<i>P_t</i>	Ratio <i>i</i>	<i>n_v</i>	<i>n_l</i>	<i>MN_l</i>	<i>P_N</i>		<i>P_t</i>		rpm	rpm	Nm	CV	kW	kW		rpm	rpm	Nm	CV	kW	kW																																																																																																																																																																																																																																																																															
90	1750	19	4400	12	9	28	225		1750	8	4400	4.9	3.6		28																																																																																																																																																																																																																																																																																																																																																																																																																		
	1450	16	4400	9.9	7.3				1000	11	4400	6.8	5					800	9	4400	5.4	4					630	7	4400	4.3	3.2					500	5	4400	3.4	2.5				100	1750	17	4400	11	8		28	250	1750	7	4400	4.3	3.1	28	1450	14	4400	8.9	6.6		1000	10	4400	6.2	4.5				800	8	4400	4.9	3.6					630	6	4400	3.9	2.9					500	5	4400	3.1	2.3				Ratio <i>i</i>	<i>n_v</i>	<i>n_l</i>	<i>MN_l</i>	<i>P_N</i>			<i>P_t</i>	Ratio <i>i</i>	<i>n_v</i>	<i>n_l</i>	<i>MN_l</i>	<i>P_N</i>		<i>P_t</i>		rpm	rpm	Nm	CV	kW	kW		rpm	rpm	Nm	CV	kW	kW																																																																																																																																																																																																																																																																																																		
	1000	11	4400	6.8	5				800	9	4400	5.4	4					630	7	4400	4.3	3.2					500	5	4400	3.4	2.5				100	1750	17	4400	11	8		28	250		1750	7	4400	4.3	3.1	28			1450	14	4400	8.9	6.6		1000	10	4400	6.2	4.5		800	8	4400	4.9	3.6				630	6	4400	3.9	2.9					500	5	4400	3.1	2.3				Ratio <i>i</i>	<i>n_v</i>	<i>n_l</i>	<i>MN_l</i>	<i>P_N</i>			<i>P_t</i>	Ratio <i>i</i>	<i>n_v</i>	<i>n_l</i>	<i>MN_l</i>	<i>P_N</i>		<i>P_t</i>		rpm	rpm	Nm	CV	kW	kW		rpm	rpm	Nm	CV	kW	kW																																																																																																																																																																																																																																																																																																											
	800	9	4400	5.4	4				630	7	4400	4.3	3.2					500	5	4400	3.4	2.5			100		1750	17	4400	11	8	28	250			1750	7	4400	4.3	3.1	28				1450	14	4400	8.9	6.6				1000	10	4400	6.2	4.5		800	8	4400	4.9	3.6		630	6	4400	3.9	2.9				500	5	4400	3.1	2.3			Ratio <i>i</i>		<i>n_v</i>	<i>n_l</i>	<i>MN_l</i>	<i>P_N</i>		<i>P_t</i>		Ratio <i>i</i>	<i>n_v</i>	<i>n_l</i>	<i>MN_l</i>	<i>P_N</i>		<i>P_t</i>		rpm	rpm	Nm	CV	kW	kW		rpm	rpm	Nm	CV	kW	kW																																																																																																																																																																																																																																																																																																																				
	630	7	4400	4.3	3.2				500	5	4400	3.4	2.5	100				1750	17	4400	11	8	28	250			1750	7	4400	4.3	3.1			28		1450	14	4400	8.9	6.6					1000	10	4400	6.2	4.5				800	8	4400	4.9	3.6		630	6	4400	3.9	2.9		500	5	4400	3.1	2.3	Ratio <i>i</i>			<i>n_v</i>	<i>n_l</i>	<i>MN_l</i>	<i>P_N</i>		<i>P_t</i>	Ratio <i>i</i>	<i>n_v</i>		<i>n_l</i>	<i>MN_l</i>	<i>P_N</i>		<i>P_t</i>		rpm	rpm	Nm	CV	kW	kW		rpm	rpm	Nm	CV	kW	kW																																																																																																																																																																																																																																																																																																																													
	500	5	4400	3.4	2.5			100	1750	17	4400	11	8			28	250	1750	7	4400	4.3	3.1				28	1450	14	4400	8.9	6.6					1000	10	4400	6.2	4.5					800	8	4400	4.9	3.6				630	6	4400	3.9	2.9		500	5	4400	3.1	2.3	Ratio <i>i</i>	<i>n_v</i>	<i>n_l</i>	<i>MN_l</i>	<i>P_N</i>		<i>P_t</i>	Ratio <i>i</i>	<i>n_v</i>	<i>n_l</i>	<i>MN_l</i>	<i>P_N</i>		<i>P_t</i>		rpm	rpm	Nm	CV	kW	kW		rpm	rpm	Nm	CV	kW	kW																																																																																																																																																																																																																																																																																																																																						
100	1750	17	4400	11	8	28	250		1750	7	4400	4.3	3.1		28																																																																																																																																																																																																																																																																																																																																																																																																																		
	1450	14	4400	8.9	6.6				1000	10	4400	6.2	4.5					800	8	4400	4.9	3.6					630	6	4400	3.9	2.9					500	5	4400	3.1	2.3				Ratio <i>i</i>	<i>n_v</i>	<i>n_l</i>	<i>MN_l</i>	<i>P_N</i>			<i>P_t</i>	Ratio <i>i</i>	<i>n_v</i>	<i>n_l</i>	<i>MN_l</i>	<i>P_N</i>		<i>P_t</i>		rpm	rpm	Nm	CV	kW	kW		rpm	rpm	Nm	CV	kW	kW																																																																																																																																																																																																																																																																																																																																																									
	1000	10	4400	6.2	4.5				800	8	4400	4.9	3.6					630	6	4400	3.9	2.9					500	5	4400	3.1	2.3				Ratio <i>i</i>	<i>n_v</i>	<i>n_l</i>	<i>MN_l</i>	<i>P_N</i>			<i>P_t</i>	Ratio <i>i</i>	<i>n_v</i>	<i>n_l</i>	<i>MN_l</i>	<i>P_N</i>		<i>P_t</i>		rpm	rpm	Nm	CV	kW	kW		rpm	rpm	Nm	CV	kW	kW																																																																																																																																																																																																																																																																																																																																																																		
	800	8	4400	4.9	3.6				630	6	4400	3.9	2.9					500	5	4400	3.1	2.3			Ratio <i>i</i>		<i>n_v</i>	<i>n_l</i>	<i>MN_l</i>	<i>P_N</i>		<i>P_t</i>	Ratio <i>i</i>		<i>n_v</i>	<i>n_l</i>	<i>MN_l</i>	<i>P_N</i>		<i>P_t</i>		rpm	rpm	Nm	CV	kW	kW		rpm	rpm	Nm	CV	kW	kW																																																																																																																																																																																																																																																																																																																																																																											
	630	6	4400	3.9	2.9				500	5	4400	3.1	2.3	Ratio <i>i</i>				<i>n_v</i>	<i>n_l</i>	<i>MN_l</i>	<i>P_N</i>		<i>P_t</i>	Ratio <i>i</i>	<i>n_v</i>		<i>n_l</i>	<i>MN_l</i>	<i>P_N</i>		<i>P_t</i>		rpm	rpm	Nm	CV	kW	kW		rpm	rpm	Nm	CV	kW	kW																																																																																																																																																																																																																																																																																																																																																																																				
	500	5	4400	3.1	2.3																																																																																																																																																																																																																																																																																																																																																																																																																												
Ratio <i>i</i>	<i>n_v</i>	<i>n_l</i>	<i>MN_l</i>	<i>P_N</i>		<i>P_t</i>	Ratio <i>i</i>	<i>n_v</i>	<i>n_l</i>	<i>MN_l</i>	<i>P_N</i>		<i>P_t</i>																																																																																																																																																																																																																																																																																																																																																																																																																				
	rpm	rpm	Nm	CV	kW	kW		rpm	rpm	Nm	CV	kW	kW																																																																																																																																																																																																																																																																																																																																																																																																																				

n_v: revolutions per minute of the high speed shaft [r.p.m.].
n_l: revolutions per minute of the low speed shaft [r.p.m.].
MN_l: nominal torque of the low speed shaft [Nm].
P_N: nominal power at low speed shaft [CV (horse-power)-kW].
P_t: thermal capacity [kW].
i: transmission ratio *n_v/n_l*.

Nominal power and torque ratings RS

Size	5000					Size	5000						
Ratio <i>i</i>	<i>n_v</i>	<i>n_l</i>	<i>M_{Nl}</i>	<i>P_N</i>		<i>P_t</i>	Ratio <i>i</i>	<i>n_v</i>	<i>n_l</i>	<i>M_{Nl}</i>	<i>P_N</i>		<i>P_t</i>
	rpm	rpm	Nm	CV	kW	kW		rpm	rpm	Nm	CV	kW	kW
45	1750	38	5640	31	23	38	112	1750	15	5640	12	9	38
	1450	32	5640	26	19			1450	13	5640	10	7	
	1000	22	5640	18	13			1000	9	5640	7	5.2	
	800	18	5640	14	10			800	7	5640	5.6	4.1	
	630	14	5640	11	8			630	5	5640	4.4	3.2	
	500	11	5640	8.8	6.5			500	4	5640	3.5	2.6	
50	1750	35	5640	28	21	38	125	1750	14	5640	11	8	38
	1450	29	5640	23	17			1450	12	5640	9.5	7	
	1000	20	5640	16	12			1000	8	5640	6.6	4.8	
	800	16	5640	13	9			800	7	5640	5.3	3.9	
	630	13	5640	10	7			630	5	5640	4.1	3	
	500	10	5640	8	5.9			500	4	5640	3.3	2.4	
56	1750	31	5640	25	18	38	140	1750	12	5640	10	7	38
	1450	25	5640	20	15			1450	10	5640	8.3	6.1	
	1000	17	5640	14	10			1000	7	5640	5.7	4.2	
	800	14	5640	11	8			800	6	5640	4.6	3.4	
	630	11	5640	8.8	6.5			630	4	5640	3.6	2.7	
	500	9	5640	7	5.2			500	4	5640	2.9	2.1	
63	1750	28	5640	22	16	38	160	1750	11	5640	8.6	6.4	38
	1450	23	5640	19	14			1450	9	5640	7.2	5.3	
	1000	16	5640	13	9			1000	6	5640	4.9	3.6	
	800	13	5640	10	8			800	5	5640	3.9	2.9	
	630	10	5640	8	5.9			630	4	5640	3.1	2.3	
	500	8	5640	6.4	4.7			500	3	5640	2.5	1.8	
71	1750	25	5640	20	15	38	180	1750	10	5640	8	5.9	38
	1450	21	5640	17	12			1450	8	5640	6.6	4.9	
	1000	14	5640	12	9			1000	6	5640	4.6	3.4	
	800	12	5640	9.3	6.8			800	5	5640	3.6	2.7	
	630	9	5640	7.3	5.4			630	4	5640	2.9	2.1	
	500	7	5640	5.8	4.3			500	3	5640	2.3	1.7	
80	1750	22	5640	17	13	38	200	1750	9	5640	7.3	5.4	38
	1450	18	5640	14	11			1450	8	5640	6.1	4.5	
	1000	12	5640	9.9	7.3			1000	5	5640	4.2	3.1	
	800	10	5640	7.9	5.8			800	4	5640	3.4	2.5	
	630	8	5640	6.2	4.6			630	3	5640	2.6	1.9	
	500	6	5640	5	3.6			500	3	5640	2.1	1.5	
90	1750	19	5640	16	11	38	225	1750	8	5640	6.3	4.6	38
	1450	16	5640	13	9			1450	6	5640	5.2	3.8	
	1000	11	5640	8.9	6.5			1000	4	5640	3.6	2.6	
	800	9	5640	7.1	5.2			800	4	5640	2.9	2.1	
	630	7	5640	5.6	4.1			630	3	5640	2.3	1.7	
	500	6	5640	4.4	3.3			500	2	5640	1.8	1.3	
100	1750	17	5640	14	10	38	250	1750	7	5640	5.4	4	38
	1450	14	5640	11	8			1450	6	5640	4.5	3.3	
	1000	10	5640	7.9	5.8			1000	4	5640	3.1	2.3	
	800	8	5640	6.3	4.7			800	3	5640	2.5	1.8	
	630	6	5640	5	3.7			630	2	5640	2	1.4	
	500	5	5640	4	2.9			500	2	5640	1.6	1.1	
Ratio <i>i</i>	<i>n_v</i>	<i>n_l</i>	<i>M_{Nl}</i>	<i>P_N</i>		<i>P_t</i>	Ratio <i>i</i>	<i>n_v</i>	<i>n_l</i>	<i>M_{Nl}</i>	<i>P_N</i>		<i>P_t</i>
	rpm	rpm	Nm	CV	kW	kW		rpm	rpm	Nm	CV	kW	kW

n_v: revolutions per minute of the high speed shaft [r.p.m.].
n_l: revolutions per minute of the low speed shaft [r.p.m.].
M_{Nl}: nominal torque of the low speed shaft [Nm].
P_N: nominal power at low speed shaft [CV (horse-power) kW].
P_t: thermal capacity [kW].
i: transmission ratio *n_v/n_l*.

Nominal power and torque ratings RS

Size	5000 P					Size	5000 P						
Ratio <i>i</i>	n_v	n_l	M_{Nl}	P_N		P_t	Ratio <i>i</i>	n_v	n_l	M_{Nl}	P_N		P_t
	rpm	rpm	Nm	CV	kW	kW		rpm	rpm	Nm	CV	kW	kW
45	1750	38	7800	43	31	38	112	1750	15	7800	17	12	38
	1450	32	7800	35	26			1450	13	7800	14	10	
	1000	22	7800	24	18			1000	9	7800	9.7	7.1	
	800	18	7800	19	14			800	7	7800	7.8	5.7	
	630	14	7800	15	11			630	5	7800	6.1	4.5	
	500	11	7800	12	9			500	4	7800	4.8	3.6	
50	1750	35	7800	39	29	38	125	1750	14	7800	16	12	38
	1450	29	7800	32	24			1450	12	7800	13	10	
	1000	20	7800	22	16			1000	8	7800	9.1	6.7	
	800	16	7800	18	13			800	7	7800	7.3	5.3	
	630	13	7800	14	10			630	5	7800	5.7	4.2	
	500	10	7800	11	8			500	4	7800	4.5	3.3	
56	1750	31	7800	34	25	38	140	1750	12	7800	14	10	38
	1450	25	7800	28	21			1450	10	7800	11	8	
	1000	17	7800	19	14			1000	7	7800	7.9	5.8	
	800	14	7800	16	11			800	6	7800	6.3	4.7	
	630	11	7800	12	9			630	4	7800	5	3.7	
	500	9	7800	9.7	7.1			500	4	7800	4	2.9	
63	1750	28	7800	31	23	38	160	1750	11	7800	12	9	38
	1450	23	7800	26	19			1450	9	7800	9.9	7.3	
	1000	16	7800	18	13			1000	6	7800	6.8	5	
	800	13	7800	14	10			800	5	7800	5.5	4	
	630	10	7800	11	8			630	4	7800	4.3	3.2	
	500	8	7800	8.8	6.5			500	3	7800	3.4	2.5	
71	1750	25	7800	28	21	38	180	1750	10	7800	11	8	38
	1450	21	7800	23	17			1450	8	7800	9.1	6.7	
	1000	14	7800	16	12			1000	6	7800	6.3	4.6	
	800	12	7800	13	9			800	5	7800	5	3.7	
	630	9	7800	10	7			630	4	7800	4	2.9	
	500	7	7800	8	5.9			500	3	7800	3.2	2.3	
80	1750	22	7800	24	18	38	200	1750	9	7800	10	7	38
	1450	18	7800	20	15			1450	8	7800	8.4	6.2	
	1000	12	7800	14	10			1000	5	7800	5.8	4.3	
	800	10	7800	11	8			800	4	7800	4.6	3.4	
	630	8	7800	8.5	6.4			630	3	7800	3.7	2.7	
	500	6	7800	6.9	5			500	3	7800	2.9	2.1	
90	1750	19	7800	22	16	38	225	1750	8	7800	8.7	6.4	38
	1450	16	7800	18	13			1450	6	7800	7.2	5.3	
	1000	11	7800	12	9			1000	4	7800	5	3.6	
	800	9	7800	9.8	7.2			800	4	7800	4	2.9	
	630	7	7800	7.7	5.7			630	3	7800	3.1	2.3	
	500	6	7800	6.1	4.5			500	2	7800	2.5	1.8	
100	1750	17	7800	19	14	38	250	1750	7	7800	7.5	5.5	38
	1450	14	7800	16	12			1450	6	7800	6.2	4.6	
	1000	10	7800	11	8			1000	4	7800	4.3	3.2	
	800	8	7800	8.8	6.4			800	3	7800	3.4	2.5	
	630	6	7800	6.9	5.1			630	3	7800	2.7	2	
	500	5	7800	5.5	4			500	2	7800	2.1	1.6	
Ratio <i>i</i>	n_v	n_l	M_{Nl}	P_N		P_t	Ratio <i>i</i>	n_v	n_l	M_{Nl}	P_N		P_t
	rpm	rpm	Nm	CV	kW	kW		rpm	rpm	Nm	CV	kW	kW

n_v : revolutions per minute of the high speed shaft [r.p.m.].
 n_l : revolutions per minute of the low speed shaft [r.p.m.].
 M_{Nl} : nominal torque of the low speed shaft [Nm].
 P_N : nominal power at low speed shaft [CV (horse-power)-kW].
 P_t : thermal capacity [kW].
 i : transmission ratio n_v/n_l .

Nominal power and torque ratings RS

Size	8000					Size	8000																																																																																																																																																																																																																																																																																																																																																																																																																										
Ratio <i>i</i>	<i>n_v</i>	<i>n_l</i>	<i>M_{Nl}</i>	<i>P_N</i>		<i>P_t</i>	Ratio <i>i</i>	<i>n_v</i>	<i>n_l</i>	<i>M_{Nl}</i>	<i>P_N</i>		<i>P_t</i>																																																																																																																																																																																																																																																																																																																																																																																																																				
	rpm	rpm	Nm	CV	kW	kW		rpm	rpm	Nm	CV	kW	kW																																																																																																																																																																																																																																																																																																																																																																																																																				
45	1750	39	10100	56	41	56	112	1750	15	10100	22	16	56																																																																																																																																																																																																																																																																																																																																																																																																																				
	1450	32	10100	46	34			1000	22	10100	32	24		800	18	10100	26	19	630	14	10100	20	15	500	11	10100	16	12	50	1750	34	10100	49	36	56	125	1750	14	10100	20	15	56	1450	28	10100	41	30	1000	20	10100	28	21	800	16	10100	23	17	630	12	10100	18	13	500	10	10100	14	10	56	1750	32	10100	45	33	56	140	1750	12	10100	17	13	56	1450	26	10100	38	28	1000	18	10100	26	19	800	14	10100	21	15	630	11	10100	16	12	500	9	10100	13	10	63	1750	28	10100	40	29	56	160	1750	11	10100	16	12	56	1450	23	10100	33	24	1000	16	10100	23	17	800	13	10100	18	13	630	10	10100	14	11	500	8	10100	11	8	71	1750	24	10100	35	26	56	180	1750	10	10100	14	10	56	1450	20	10100	29	21	1000	14	10100	20	15	800	11	10100	16	12	630	9	10100	13	9	500	7	10100	9.9	7.3	80	1750	22	10100	32	23	58	200	1750	9	10100	13	9	56	1450	18	10100	26	19	1000	13	10100	18	13	800	10	10100	14	11	630	8	10100	11	8	500	6	10100	9	6.7	90	1750	19	10100	27	20	58	225	1750	8	10100	12	9	56	1450	16	10100	23	17	1000	11	10100	16	12	800	9	10100	13	9	630	7	10100	9.9	7.3	500	5	10100	7.8	5.8	100	1750	17	10100	25	18	58	250	1750	7	10100	10	7.3	56	1450	14	10100	21	15	1000	10	10100	14	10	800	8	10100	11	8	630	6	10100	8.9	6.6	500	5	10100	7.1	5.2	Ratio <i>i</i>	<i>n_v</i>	<i>n_l</i>	<i>M_{Nl}</i>	<i>P_N</i>		<i>P_t</i>	Ratio <i>i</i>	<i>n_v</i>	<i>n_l</i>	<i>M_{Nl}</i>	<i>P_N</i>		<i>P_t</i>		rpm	rpm	Nm	CV	kW	kW		rpm	rpm	Nm	CV	kW	kW																																																																																								
	1000	22	10100	32	24			800	18	10100	26	19		630	14	10100	20	15	500	11	10100	16	12	50	1750	34	10100	49		36	56	125	1750	14			10100	20	15	56	1450		28	10100	41	30	1000	20	10100	28	21	800	16	10100	23	17	630	12	10100	18	13	500	10	10100	14	10	56		1750	32	10100	45	33			56	140	1750	12	10100		17	13	56	1450	26	10100	38	28	1000	18	10100	26	19	800	14	10100	21	15	630	11	10100	16	12	500	9		10100	13	10	63	1750			28	10100	40	29	56		160	1750	11	10100	16	12	56	1450	23	10100	33	24	1000	16	10100	23	17	800	13	10100	18	13	630	10	10100		14	11	500	8	10100			11	8	71	1750	24		10100	35	26	56	180	1750	10	10100	14	10	56	1450	20	10100	29	21	1000	14	10100	20	15	800	11	10100	16		12	630	9	10100	13			9	500	7	10100	9.9		7.3	80	1750	22	10100	32	23	58	200	1750	9	10100	13	9	56	1450	18	10100	26	19	1000	13	10100	18	13		800	10	10100	14	11			630	8	10100	11	8		500	6	10100	9	6.7	90	1750	19	10100	27	20	58	225	1750	8	10100	12	9	56	1450	16	10100	23	17	1000		11	10100	16	12	800			9	10100	13	9	630		7	10100	9.9	7.3	500	5	10100	7.8	5.8	100	1750	17	10100	25	18	58	250	1750	7	10100	10	7.3	56	1450	14	10100	21	15	1000	10	10100	14	10	800	8	10100	11	8	630	6	10100	8.9	6.6	500	5	10100	7.1	5.2	Ratio <i>i</i>	<i>n_v</i>	<i>n_l</i>	<i>M_{Nl}</i>	<i>P_N</i>		<i>P_t</i>	Ratio <i>i</i>	<i>n_v</i>	<i>n_l</i>	<i>M_{Nl}</i>	<i>P_N</i>		<i>P_t</i>		rpm	rpm	Nm	CV	kW	kW		rpm	rpm	Nm	CV	kW	kW																																																																	
	800	18	10100	26	19			630	14	10100	20	15		500	11	10100	16	12	50	1750	34	10100	49		36	56	125	1750		14			10100	20			15	56	1450		28		10100	41	30	1000	20	10100	28	21	800	16	10100	23	17	630	12	10100	18	13	500	10	10100	14	10	56			1750	32	10100	45	33					56	140	1750		12	10100		17	13	56	1450	26	10100	38	28	1000	18	10100	26	19	800	14	10100	21	15	630	11	10100	16		12	500	9		10100			13	10	63	1750				28	10100	40	29	56		160	1750	11	10100	16	12	56	1450	23	10100	33	24	1000	16	10100	23	17	800		13	10100	18	13	630			10	10100		14	11		500	8	10100			11	8	71	1750	24		10100	35	26	56	180	1750	10	10100	14	10	56	1450	20	10100		29	21	1000	14	10100			20	15	800	11	10100		16		12	630	9	10100	13			9	500	7	10100	9.9		7.3	80	1750	22	10100	32	23	58	200	1750		9	10100	13	9	56			1450	18	10100	26	19		1000	13	10100	18	13		800	10	10100	14	11			630	8	10100	11	8		500	6	10100	9	6.7	90		1750	19	10100	27	20			58	225	1750	8	10100		12	9	56	1450	16	10100	23	17	1000		11	10100	16	12	800			9	10100	13	9	630		7	10100	9.9	7.3	500	5	10100	7.8	5.8	100	1750	17	10100	25	18	58	250	1750	7	10100	10	7.3	56	1450	14	10100	21	15	1000	10	10100	14	10	800	8	10100	11	8	630	6	10100	8.9	6.6	500	5	10100	7.1	5.2	Ratio <i>i</i>	<i>n_v</i>	<i>n_l</i>	<i>M_{Nl}</i>	<i>P_N</i>		<i>P_t</i>	Ratio <i>i</i>	<i>n_v</i>	<i>n_l</i>	<i>M_{Nl}</i>	<i>P_N</i>		<i>P_t</i>		rpm	rpm	Nm	CV	kW	kW		rpm	rpm	Nm	CV	kW	kW																																										
	630	14	10100	20	15			500	11	10100	16	12		50	1750	34	10100	49		36	56	125	1750		14			10100		20			15	56			1450		28		10100		41	30	1000	20	10100	28	21	800	16	10100	23	17	630	12	10100	18	13	500	10	10100	14	10	56				1750	32	10100	45	33							56		140	1750		12	10100		17	13	56	1450	26	10100	38	28	1000	18	10100	26	19	800	14	10100	21	15	630		11	10100	16		12			500	9		10100				13	10	63	1750				28	10100	40	29	56		160	1750	11	10100	16	12	56	1450	23	10100	33		24	1000	16	10100	23			17	800		13	10100		18	13	630			10	10100		14	11		500	8	10100			11	8	71	1750	24		10100	35	26		56	180	1750	10	10100			14	10	56	1450	20		10100		29	21	1000	14	10100			20	15	800	11	10100		16		12	630	9	10100	13			9		500	7	10100	9.9				7.3	80	1750	22	10100		32	23	58	200	1750		9	10100	13	9	56			1450	18	10100	26	19		1000	13	10100	18	13			800	10	10100	14	11					630	8	10100		11	8		500	6	10100	9	6.7	90		1750	19	10100	27	20			58	225	1750	8	10100		12	9	56	1450	16	10100	23	17	1000		11	10100	16	12	800			9	10100	13	9	630		7	10100	9.9	7.3	500	5	10100	7.8	5.8	100	1750	17	10100	25	18	58	250	1750	7	10100	10	7.3	56	1450	14	10100	21	15	1000	10	10100	14	10	800	8	10100	11	8	630	6	10100	8.9	6.6	500	5	10100	7.1	5.2	Ratio <i>i</i>	<i>n_v</i>	<i>n_l</i>	<i>M_{Nl}</i>	<i>P_N</i>		<i>P_t</i>	Ratio <i>i</i>	<i>n_v</i>	<i>n_l</i>	<i>M_{Nl}</i>	<i>P_N</i>		<i>P_t</i>		rpm	rpm	Nm	CV	kW	kW		rpm	rpm	Nm	CV	kW	kW																			
	500	11	10100	16	12			50	1750	34	10100	49			36	56	125	1750		14			10100		20			15		56			1450				28		10100		41		30	1000	20	10100	28	21	800	16	10100	23	17	630	12	10100	18	13	500	10	10100	14	10	56					1750	32	10100	45	33										56		140	1750		12	10100		17	13	56	1450	26	10100	38	28	1000	18	10100	26	19	800	14	10100		21	15	630		11			10100	16		12				500	9		10100				13	10	63	1750				28	10100	40	29	56		160	1750	11	10100		16	12	56	1450	23			10100	33		24	1000		16	10100	23			17	800		13	10100		18	13	630			10	10100		14	11		500	8	10100				11	8	71			1750	24		10100	35		26		56	180	1750	10	10100			14	10	56	1450	20		10100		29	21	1000	14	10100			20		15	800	11	10100				16		12	630	9		10100	13			9		500	7	10100	9.9				7.3	80	1750	22	10100		32	23	58	200	1750			9	10100	13	9	56					1450	18	10100		26	19		1000	13	10100	18	13			800	10	10100	14	11					630	8	10100		11	8		500	6	10100	9	6.7	90		1750	19	10100	27	20			58	225	1750	8	10100		12	9	56	1450	16	10100	23	17	1000		11	10100	16	12	800			9	10100	13	9	630		7	10100	9.9	7.3	500	5	10100	7.8	5.8	100	1750	17	10100	25	18	58	250	1750	7	10100	10	7.3	56	1450	14	10100	21	15	1000	10	10100	14	10	800	8	10100	11	8	630	6	10100	8.9	6.6	500	5	10100	7.1	5.2	Ratio <i>i</i>	<i>n_v</i>	<i>n_l</i>	<i>M_{Nl}</i>	<i>P_N</i>		<i>P_t</i>	Ratio <i>i</i>	<i>n_v</i>	<i>n_l</i>	<i>M_{Nl}</i>	<i>P_N</i>		<i>P_t</i>		rpm	rpm	Nm	CV	kW	kW		rpm	rpm
50	1750	34	10100	49	36	56	125		1750	14	10100	20	15		56																																																																																																																																																																																																																																																																																																																																																																																																																		
	1450	28	10100	41	30				1000	20	10100	28	21					800		16			10100		23			17	630				12		10100	18	13		500		10	10100	14	10	56	1750	32	10100	45	33	56	140	1750	12	10100	17	13	56	1450	26	10100	38	28					1000	18	10100	26	19	800	14	10100						21					15		630	11		10100	16		12	500	9	10100	13	10	63	1750	28	10100	40	29	56	160	1750	11	10100		16	12	56	1450	23		10100		33		24	1000		16				10100	23		17				800	13	10100	18				13	630	10	10100	14	11		500	8	10100	11	8	71		1750	24	10100	35	26	56			180	1750		10	10100		14	10	56			1450	20		10100	29		21	1000	14	10100			20	15		800	11	10100	16		12	630	9	10100				13	9	500			7	10100		9.9	7.3		80		1750	22	10100	32	23			58	200	1750	9	10100	13		9	56	1450		18	10100	26	19	1000	13			10100		18	13	800	10				10100		14	11	630		8	10100			11		8	500	6	10100	9		6.7	90			1750	19	10100	27	20	58		225	1750	8	10100	12			9	56	1450	16	10100					23	17	1000		11	10100		16	12	800	9	10100			13	9	630	7	10100					9.9	7.3	500		5	10100		7.8	5.8	100	1750	17	10100		25	18	58	250	1750			7	10100	10	7.3	56		1450	14	10100	21	15	1000	10	10100	14		10	800	8	10100	11			8	630	6	10100	8.9		6.6	500	5	10100	7.1	5.2	Ratio <i>i</i>	<i>n_v</i>	<i>n_l</i>	<i>M_{Nl}</i>	<i>P_N</i>		<i>P_t</i>	Ratio <i>i</i>	<i>n_v</i>	<i>n_l</i>	<i>M_{Nl}</i>	<i>P_N</i>		<i>P_t</i>		rpm	rpm	Nm	CV	kW	kW		rpm	rpm	Nm	CV	kW	kW															
	1000	20	10100	28	21				800	16	10100	23	17					630		12			10100	18	13			500	10		10100	14	10		56	1750	32		10100	45	33	56	140	1750		12	10100	17	13	56			1450	26	10100	38	28		1000	18	10100	26	19				800	14	10100	21	15	630	11	10100	16	12	500				9			10100		13		10	63		1750	28		10100	40	29	56	160	1750		11	10100	16	12	56			1450	23	10100	33	24	1000		16	10100		23	17	800	13	10100	18		13		630		10	10100		14				11	500	8	10100				11	8	71	1750	24	10100		35	26	56	180	1750		10	10100	14	10	56	1450		20	10100		29		21	1000	14	10100	20				15	800		11	10100		16	12	630	9			10100	13		9	500	7	10100		9.9	7.3	80	1750	22			10100	32	23	58	200	1750	9		10100	13	9			56	1450	18	10100	26					19	1000	13	10100		18		13		800	10	10100	14	11	630			8	10100	11	8	500	6		10100	9	6.7		90	1750	19	10100	27	20			58		225	1750	8	10100	12		9				56	1450	16	10100	23				17	1000	11	10100		16	12		800	9	10100	13	9			630	7	10100	9.9	7.3	500		5	10100	7.8	5.8	100			1750	17	10100	25	18					58	250	1750		7	10100		10	7.3		56	1450	14		10100	21			15			1000	10	10100	14			10	800	8	10100	11	8	630	6	10100		8.9	6.6	500	5	10100			7.1	5.2	Ratio <i>i</i>	<i>n_v</i>	<i>n_l</i>		<i>M_{Nl}</i>	<i>P_N</i>		<i>P_t</i>	Ratio <i>i</i>	<i>n_v</i>	<i>n_l</i>	<i>M_{Nl}</i>	<i>P_N</i>		<i>P_t</i>		rpm	rpm	Nm	CV	kW	kW		rpm	rpm	Nm	CV	kW	kW																								
	800	16	10100	23	17				630	12	10100	18	13					500	10	10100			14	10	56	1750	32	10100	45		33	56	140			1750	12	10100	17	13	56			1450		26	10100	38	28				1000	18	10100	26	19		800	14	10100	21	15			630	11	10100	16	12	500	9	10100	13	10	63	1750	28	10100		40			29		56	160	1750			11	10100		16	12	56			1450		23	10100	33	24				1000	16	10100	23	17	800		13	10100	18	13	630	10	10100	14	11		500	8	10100	11	8	71		1750		24		10100	35	26	56				180	1750		10	10100	14		10	56			1450		20	10100	29	21		1000		14	10100		20	15	800	11	10100	16	12		630	9	10100	13		9	500	7	10100	9.9	7.3	80			1750	22		10100	32	23	58		200	1750		9	10100			13	9	56			1450	18		10100	26	19		1000		13	10100	18	13	800	10			10100	14	11	630	8	10100		11		8	500	6	10100	9	6.7			90	1750	19	10100	27	20		58	225	1750			8	10100	12	9	56				1450		16	10100	23	17		1000		11	10100		16	12	800	9		10100		13	9	630	7		10100	9.9		7.3	500	5	10100	7.8			5.8	100	1750	17	10100	25		18	58	250	1750			7	10100	10	7.3	56	1450	14	10100					21	15	1000	10		10100	14			10	800		8	10100			11			8	630	6	10100			8.9	6.6	500	5	10100	7.1	5.2	Ratio <i>i</i>	<i>n_v</i>		<i>n_l</i>	<i>M_{Nl}</i>	<i>P_N</i>		<i>P_t</i>			Ratio <i>i</i>	<i>n_v</i>	<i>n_l</i>	<i>M_{Nl}</i>	<i>P_N</i>		<i>P_t</i>		rpm	rpm	Nm	CV	kW	kW		rpm	rpm	Nm	CV	kW	kW																																		
	630	12	10100	18	13				500	10	10100	14	10	56				1750	32	10100	45	33	56	140		1750	12	10100	17		13			56		1450	26	10100	38	28				1000		18	10100	26	19				800	14	10100	21	15		630	11	10100	16	12		500	9	10100	13	10	63	1750	28	10100	40	29		56	160	1750	11	10100	16		12				56		1450	23	10100		33	24				1000		16	10100	23	17				800	13	10100	18	13	630		10	10100	14	11	500	8	10100	11	8	71	1750	24	10100	35	26			56	180	1750	10	10100	14	10			56			1450		20	10100	29		21				1000		14	10100	20	15		800		11	10100		16	12	630	9	10100	13	9		500	7	10100	9.9	7.3	80	1750	22	10100	32	23		58	200	1750	9		10100	13	9		56		1450		18	10100			26	19				1000	13		10100	18	13		800		10	10100	14	11	630	8			10100	11	8	500	6	10100		9	6.7	90	1750	19	10100	27	20	58	225		1750	8	10100	12	9	56			1450			16	10100	23	17					1000		11	10100	16	12		800		9	10100		13	9	630	7		10100		9.9	7.3	500	5	10100	7.8	5.8		100	1750	17	10100	25	18	58	250		1750	7	10100	10	7.3	56			1450			14	10100	21	15		1000	10	10100					14	10	800	8		10100	11			8	630	6	10100	8.9			6.6	500	5	10100	7.1	5.2	Ratio <i>i</i>		<i>n_v</i>	<i>n_l</i>	<i>M_{Nl}</i>	<i>P_N</i>		<i>P_t</i>	Ratio <i>i</i>	<i>n_v</i>	<i>n_l</i>	<i>M_{Nl}</i>		<i>P_N</i>		<i>P_t</i>		rpm			rpm	Nm	CV	kW	kW			rpm	rpm	Nm	CV	kW	kW																																										
	500	10	10100	14	10			56	1750	32	10100	45	33			56	140	1750	12	10100	17	13				56	1450	26	10100	38	28					1000	18	10100	26	19				800		14	10100	21	15				630	11	10100	16	12		500	9	10100	13	10	63	1750	28	10100	40	29		56	160	1750	11	10100				16	12	56	1450	23	10100	33					24	1000	16	10100	23	17				800		13	10100	18	13				630	10	10100	14	11	500		8	10100	11	8	71	1750	24	10100	35		26	56	180	1750	10		10100			14	10	56	1450	20		10100		29		21		1000	14	10100	20	15				800		11	10100	16	12		630		9	10100		13	9	500	7	10100	9.9	7.3		80	1750	22	10100	32		23	58	200	1750	9				10100	13	9	56	1450	18				10100		26	19	1000	13	10100	18				13	800	10	10100	14	11		630		8	10100	11	8	500	6			10100	9	6.7	90	1750	19		10100	27		20	58	225	1750	8				10100	12	9	56	1450				16	10100		23	17	1000	11		10100	16		12		800	9	10100	13	9	630		7	10100		9.9	7.3	500	5		10100		7.8	5.8	100	1750	17	10100	25			18	58	250	1750	7				10100	10	7.3	56	1450				14		10100	21	15	1000	10		10100	14	10	800	8			10100	11	8	630	6	10100	8.9			6.6	500	5	10100	7.1			5.2	Ratio <i>i</i>	<i>n_v</i>	<i>n_l</i>	<i>M_{Nl}</i>	<i>P_N</i>			<i>P_t</i>	Ratio <i>i</i>	<i>n_v</i>	<i>n_l</i>	<i>M_{Nl}</i>	<i>P_N</i>		<i>P_t</i>		rpm	rpm	Nm	CV	kW	kW		rpm	rpm	Nm	CV	kW	kW																																																			
56	1750	32	10100	45	33	56	140		1750	12	10100	17	13		56																																																																																																																																																																																																																																																																																																																																																																																																																		
	1450	26	10100	38	28				1000	18	10100	26	19					800	14	10100	21	15					630	11	10100	16	12					500	9	10100	13	10				63	1750	28	10100	40	29		56	160	1750	11	10100	16	12	56	1450	23	10100	33	24		1000	16	10100	23	17				800	13	10100				18	13		630	10	10100	14					11	500	8	10100	11	8				71	1750	24	10100	35	26		56	180	1750	10	10100	14	10	56	1450	20	10100	29	21		1000	14	10100	20		15			800	11		10100			16	12		630	9		10100		13		9		500	7	10100	9.9	7.3				80	1750	22	10100	32	23		58	200	1750	9	10100	13	9	56	1450	18	10100	26	19		1000	13	10100	18		13			800	10				10100	14	11		630	8				10100		11	8	500	6	10100	9				6.7	90	1750	19	10100	27	20	58		225	1750	8	10100	12	9	56	1450	16	10100	23		17	1000	11	10100	16		12			800	9				10100	13	9		630				7	10100		9.9	7.3	500	5		10100	7.8		5.8		100	1750	17	10100	25	18	58	250	1750		7	10100	10	7.3	56	1450	14	10100	21		15	1000	10	10100	14		10			800	8				10100	11	8		630				6		10100	8.9	6.6	500	5		10100	7.1	5.2	Ratio <i>i</i>	<i>n_v</i>			<i>n_l</i>	<i>M_{Nl}</i>	<i>P_N</i>		<i>P_t</i>	Ratio <i>i</i>	<i>n_v</i>	<i>n_l</i>		<i>M_{Nl}</i>	<i>P_N</i>		<i>P_t</i>		rpm	rpm	Nm	CV	kW	kW		rpm	rpm	Nm	CV	kW	kW																																																																						
	1000	18	10100	26	19				800	14	10100	21	15					630	11	10100	16	12					500	9	10100	13	10				63	1750	28	10100	40	29		56	160		1750	11	10100	16	12	56			1450	23	10100	33	24		1000	16	10100	23	17		800	13	10100	18	13				630	10	10100				14	11		500	8	10100	11				8	71	1750	24	10100	35	26		56	180		1750	10	10100	14	10	56			1450	20	10100	29	21		1000	14	10100	20	15		800	11	10100	16		12			630	9		10100			13	9		500	7		10100		9.9		7.3	80	1750	22	10100	32	23		58	200		1750	9	10100	13	9	56			1450	18	10100	26	19		1000	13	10100	18	13		800	10	10100	14		11			630	8				10100	11	8		500	6				10100	9	6.7	90	1750	19	10100	27		20	58	225		1750	8	10100	12	9		56		1450	16	10100	23	17		1000	11	10100	16		12	800	9	10100	13		9			630	7				10100	9.9	7.3		500				5	10100	7.8	5.8	100	1750	17		10100	25	18	58	250		1750	7	10100	10	7.3			56	1450	14	10100	21	15		1000	10	10100	14		10	800	8	10100	11		8			630	6				10100	8.9	6.6		500				5	10100	7.1	5.2	Ratio <i>i</i>	<i>n_v</i>	<i>n_l</i>		<i>M_{Nl}</i>	<i>P_N</i>		<i>P_t</i>	Ratio <i>i</i>	<i>n_v</i>	<i>n_l</i>	<i>M_{Nl}</i>	<i>P_N</i>		<i>P_t</i>		rpm	rpm	Nm	CV	kW	kW		rpm	rpm	Nm	CV	kW	kW																																																																															
	800	14	10100	21	15				630	11	10100	16	12					500	9	10100	13	10			63		1750	28	10100	40	29	56	160			1750	11	10100	16	12	56				1450	23	10100	33	24				1000	16	10100	23	17		800	13	10100	18	13		630	10	10100	14	11				500	8	10100	11			8	71		1750	24	10100	35	26	56		180		1750	10	10100	14	10	56				1450	20	10100	29	21				1000	14	10100	20	15		800	11	10100	16	12		630	9	10100	13		9			500	7	10100	9.9			7.3	80		1750	22	10100	32		23	58	200		1750	9	10100	13	9	56				1450	18	10100	26	19				1000	13	10100	18	13		800	10	10100	14	11		630	8	10100	11		8			500	6	10100			9	6.7	90		1750	19	10100		27	20	58	225		1750	8	10100	12	9	56				1450	16	10100	23	17				1000	11	10100	16	12		800	9	10100	13		9	630	7	10100	9.9		7.3			500	5			10100	7.8	5.8	100		1750		17	10100	25	18	58	250		1750	7	10100	10	7.3	56				1450	14	10100	21	15				1000	10	10100	14	10		800	8	10100	11		8	630	6	10100	8.9		6.6			500	5			10100	7.1	5.2	Ratio <i>i</i>		<i>n_v</i>		<i>n_l</i>	<i>M_{Nl}</i>	<i>P_N</i>		<i>P_t</i>	Ratio <i>i</i>	<i>n_v</i>	<i>n_l</i>	<i>M_{Nl}</i>	<i>P_N</i>		<i>P_t</i>		rpm	rpm	Nm	CV	kW	kW		rpm	rpm	Nm	CV	kW	kW																																																																																								
	630	11	10100	16	12				500	9	10100	13	10	63				1750	28	10100	40	29	56	160			1750	11	10100	16	12			56		1450	23	10100	33	24					1000	16	10100	23	17				800	13	10100	18	13		630	10	10100	14	11		500	8	10100	11	8	71			1750	24	10100	35	26	56	180			1750	10	10100	14	10		56			1450	20	10100	29	21					1000	14	10100	20	15				800	11	10100	16	12		630	9	10100	13	9		500	7	10100	9.9	7.3	80			1750	22	10100	32	23	58	200			1750	9	10100	13	9	56				1450	18	10100	26	19					1000	13	10100	18	13				800	10	10100	14	11		630	8	10100	11	8		500	6	10100	9	6.7	90			1750	19	10100	27	20	58	225			1750	8	10100	12	9	56				1450	16	10100	23	17					1000	11	10100	16	12				800	9	10100	13	9		630	7	10100	9.9		7.3	500	5	10100	7.8	5.8	100			1750	17	10100	25	18	58	250			1750	7	10100	10	7.3	56				1450	14	10100	21	15					1000	10	10100	14	10				800	8	10100	11	8		630	6	10100	8.9		6.6	500	5	10100	7.1	5.2	Ratio <i>i</i>			<i>n_v</i>	<i>n_l</i>	<i>M_{Nl}</i>	<i>P_N</i>		<i>P_t</i>	Ratio <i>i</i>	<i>n_v</i>		<i>n_l</i>	<i>M_{Nl}</i>	<i>P_N</i>		<i>P_t</i>		rpm	rpm	Nm	CV	kW	kW		rpm	rpm	Nm	CV	kW	kW																																																																																																	
	500	9	10100	13	10			63	1750	28	10100	40	29			56	160	1750	11	10100	16	12				56	1450	23	10100	33	24					1000	16	10100	23	17					800	13	10100	18	13				630	10	10100	14	11		500	8	10100	11	8	71	1750	24	10100	35	26		56	180	1750	10	10100	14	10				56	1450	20	10100	29	21					1000	14	10100	20	15					800	11	10100	16	12				630	9	10100	13	9		500	7	10100	9.9	7.3	80	1750	22	10100	32	23		58	200	1750	9	10100	13	9				56	1450	18	10100	26	19					1000	13	10100	18	13					800	10	10100	14	11				630	8	10100	11	8		500	6	10100	9	6.7	90	1750	19	10100	27	20		58	225	1750	8	10100	12	9				56	1450	16	10100	23	17					1000	11	10100	16	12					800	9	10100	13	9				630	7	10100	9.9	7.3		500	5	10100	7.8	5.8	100	1750	17	10100	25	18		58	250	1750	7	10100	10	7.3				56	1450	14	10100	21	15					1000	10	10100	14	10					800	8	10100	11	8				630	6	10100	8.9	6.6		500	5	10100	7.1	5.2	Ratio <i>i</i>	<i>n_v</i>	<i>n_l</i>	<i>M_{Nl}</i>	<i>P_N</i>		<i>P_t</i>	Ratio <i>i</i>	<i>n_v</i>	<i>n_l</i>	<i>M_{Nl}</i>	<i>P_N</i>		<i>P_t</i>		rpm	rpm	Nm	CV	kW	kW		rpm	rpm	Nm	CV	kW	kW																																																																																																										
63	1750	28	10100	40	29	56	160		1750	11	10100	16	12		56																																																																																																																																																																																																																																																																																																																																																																																																																		
	1450	23	10100	33	24				1000	16	10100	23	17					800	13	10100	18	13					630	10	10100	14	11					500	8	10100	11	8				71	1750	24	10100	35	26		56	180	1750	10	10100	14	10	56	1450	20	10100	29	21		1000	14	10100	20	15				800	11	10100	16	12					630	9	10100	13	9					500	7	10100	9.9	7.3				80	1750	22	10100	32	23		58	200	1750	9	10100	13	9	56	1450	18	10100	26	19		1000	13	10100	18	13				800	10	10100	14	11					630	8	10100	11	8					500	6	10100	9	6.7				90	1750	19	10100	27	20		58	225	1750	8	10100	12	9	56	1450	16	10100	23	17		1000	11	10100	16	12				800	9	10100	13	9					630	7	10100	9.9	7.3					500	5	10100	7.8	5.8				100	1750	17	10100	25	18	58		250	1750	7	10100	10	7.3	56	1450	14	10100	21	15		1000	10	10100	14	10				800	8	10100	11	8					630	6	10100	8.9	6.6					500	5	10100	7.1	5.2				Ratio <i>i</i>	<i>n_v</i>	<i>n_l</i>	<i>M_{Nl}</i>	<i>P_N</i>		<i>P_t</i>	Ratio <i>i</i>		<i>n_v</i>	<i>n_l</i>	<i>M_{Nl}</i>	<i>P_N</i>		<i>P_t</i>		rpm	rpm	Nm	CV	kW	kW		rpm	rpm	Nm	CV	kW	kW																																																																																																																													
	1000	16	10100	23	17				800	13	10100	18	13					630	10	10100	14	11					500	8	10100	11	8				71	1750	24	10100	35	26		56	180		1750	10	10100	14	10	56			1450	20	10100	29	21		1000	14	10100	20	15		800	11	10100	16	12				630	9	10100	13	9					500	7	10100	9.9	7.3				80	1750	22	10100	32	23		58	200		1750	9	10100	13	9	56			1450	18	10100	26	19		1000	13	10100	18	13		800	10	10100	14	11				630	8	10100	11	8					500	6	10100	9	6.7				90	1750	19	10100	27	20		58	225		1750	8	10100	12	9	56			1450	16	10100	23	17		1000	11	10100	16	12		800	9	10100	13	9				630	7	10100	9.9	7.3					500	5	10100	7.8	5.8				100	1750	17	10100	25	18		58	250		1750	7	10100	10	7.3		56		1450	14	10100	21	15		1000	10	10100	14	10		800	8	10100	11	8				630	6	10100	8.9	6.6					500	5	10100	7.1	5.2				Ratio <i>i</i>	<i>n_v</i>	<i>n_l</i>	<i>M_{Nl}</i>	<i>P_N</i>			<i>P_t</i>	Ratio <i>i</i>	<i>n_v</i>	<i>n_l</i>	<i>M_{Nl}</i>	<i>P_N</i>		<i>P_t</i>		rpm	rpm	Nm	CV	kW	kW		rpm	rpm	Nm	CV	kW	kW																																																																																																																																						
	800	13	10100	18	13				630	10	10100	14	11					500	8	10100	11	8			71		1750	24	10100	35	26	56	180			1750	10	10100	14	10	56				1450	20	10100	29	21				1000	14	10100	20	15		800	11	10100	16	12		630	9	10100	13	9				500	7	10100	9.9	7.3			80		1750	22	10100	32	23	58		200		1750	9	10100	13	9	56				1450	18	10100	26	19				1000	13	10100	18	13		800	10	10100	14	11		630	8	10100	11	8				500	6	10100	9	6.7			90		1750	19	10100	27	20		58	225		1750	8	10100	12	9	56				1450	16	10100	23	17				1000	11	10100	16	12		800	9	10100	13	9		630	7	10100	9.9	7.3				500	5	10100	7.8	5.8			100		1750	17	10100	25	18		58	250		1750	7	10100	10	7.3	56				1450	14	10100	21	15				1000	10	10100	14	10		800	8	10100	11	8		630	6	10100	8.9	6.6				500	5	10100	7.1	5.2			Ratio <i>i</i>		<i>n_v</i>	<i>n_l</i>	<i>M_{Nl}</i>	<i>P_N</i>			<i>P_t</i>	Ratio <i>i</i>	<i>n_v</i>	<i>n_l</i>	<i>M_{Nl}</i>	<i>P_N</i>		<i>P_t</i>		rpm	rpm	Nm	CV	kW	kW		rpm	rpm	Nm	CV	kW	kW																																																																																																																																															
	630	10	10100	14	11				500	8	10100	11	8	71				1750	24	10100	35	26	56	180			1750	10	10100	14	10			56		1450	20	10100	29	21					1000	14	10100	20	15				800	11	10100	16	12		630	9	10100	13	9		500	7	10100	9.9	7.3	80			1750	22	10100	32	23	58	200			1750	9	10100	13	9		56			1450	18	10100	26	19					1000	13	10100	18	13				800	10	10100	14	11		630	8	10100	11	8		500	6	10100	9	6.7	90			1750	19	10100	27	20	58	225			1750	8	10100	12	9	56				1450	16	10100	23	17					1000	11	10100	16	12				800	9	10100	13	9		630	7	10100	9.9	7.3		500	5	10100	7.8	5.8	100			1750	17	10100	25	18	58	250			1750	7	10100	10	7.3	56				1450	14	10100	21	15					1000	10	10100	14	10				800	8	10100	11	8		630	6	10100	8.9	6.6		500	5	10100	7.1	5.2	Ratio <i>i</i>			<i>n_v</i>	<i>n_l</i>	<i>M_{Nl}</i>	<i>P_N</i>		<i>P_t</i>	Ratio <i>i</i>	<i>n_v</i>		<i>n_l</i>	<i>M_{Nl}</i>	<i>P_N</i>		<i>P_t</i>		rpm	rpm	Nm	CV	kW	kW		rpm	rpm	Nm	CV	kW	kW																																																																																																																																																								
	500	8	10100	11	8			71	1750	24	10100	35	26			56	180	1750	10	10100	14	10				56	1450	20	10100	29	21					1000	14	10100	20	15					800	11	10100	16	12				630	9	10100	13	9		500	7	10100	9.9	7.3	80	1750	22	10100	32	23		58	200	1750	9	10100	13	9				56	1450	18	10100	26	19					1000	13	10100	18	13					800	10	10100	14	11				630	8	10100	11	8		500	6	10100	9	6.7	90	1750	19	10100	27	20		58	225	1750	8	10100	12	9				56	1450	16	10100	23	17					1000	11	10100	16	12					800	9	10100	13	9				630	7	10100	9.9	7.3		500	5	10100	7.8	5.8	100	1750	17	10100	25	18		58	250	1750	7	10100	10	7.3				56	1450	14	10100	21	15					1000	10	10100	14	10					800	8	10100	11	8				630	6	10100	8.9	6.6		500	5	10100	7.1	5.2	Ratio <i>i</i>	<i>n_v</i>	<i>n_l</i>	<i>M_{Nl}</i>	<i>P_N</i>		<i>P_t</i>	Ratio <i>i</i>	<i>n_v</i>	<i>n_l</i>	<i>M_{Nl}</i>	<i>P_N</i>		<i>P_t</i>		rpm	rpm	Nm	CV	kW	kW		rpm	rpm	Nm	CV	kW	kW																																																																																																																																																																	
71	1750	24	10100	35	26	56	180		1750	10	10100	14	10		56																																																																																																																																																																																																																																																																																																																																																																																																																		
	1450	20	10100	29	21				1000	14	10100	20	15					800	11	10100	16	12					630	9	10100	13	9					500	7	10100	9.9	7.3				80	1750	22	10100	32	23		58	200	1750	9	10100	13	9	56	1450	18	10100	26	19		1000	13	10100	18	13				800	10	10100	14	11					630	8	10100	11	8					500	6	10100	9	6.7				90	1750	19	10100	27	20		58	225	1750	8	10100	12	9	56	1450	16	10100	23	17		1000	11	10100	16	12				800	9	10100	13	9					630	7	10100	9.9	7.3					500	5	10100	7.8	5.8				100	1750	17	10100	25	18		58	250	1750	7	10100	10	7.3	56	1450	14	10100	21	15		1000	10	10100	14	10				800	8	10100	11	8					630	6	10100	8.9	6.6					500	5	10100	7.1	5.2				Ratio <i>i</i>	<i>n_v</i>	<i>n_l</i>	<i>M_{Nl}</i>	<i>P_N</i>		<i>P_t</i>		Ratio <i>i</i>	<i>n_v</i>	<i>n_l</i>	<i>M_{Nl}</i>	<i>P_N</i>		<i>P_t</i>		rpm	rpm	Nm	CV	kW	kW		rpm	rpm	Nm	CV	kW	kW																																																																																																																																																																																				
	1000	14	10100	20	15				800	11	10100	16	12					630	9	10100	13	9					500	7	10100	9.9	7.3				80	1750	22	10100	32	23		58	200		1750	9	10100	13	9	56			1450	18	10100	26	19		1000	13	10100	18	13		800	10	10100	14	11				630	8	10100	11	8					500	6	10100	9	6.7				90	1750	19	10100	27	20		58	225		1750	8	10100	12	9	56			1450	16	10100	23	17		1000	11	10100	16	12		800	9	10100	13	9				630	7	10100	9.9	7.3					500	5	10100	7.8	5.8				100	1750	17	10100	25	18		58	250		1750	7	10100	10	7.3	56			1450	14	10100	21	15		1000	10	10100	14	10		800	8	10100	11	8				630	6	10100	8.9	6.6					500	5	10100	7.1	5.2				Ratio <i>i</i>	<i>n_v</i>	<i>n_l</i>	<i>M_{Nl}</i>	<i>P_N</i>			<i>P_t</i>	Ratio <i>i</i>	<i>n_v</i>	<i>n_l</i>	<i>M_{Nl}</i>	<i>P_N</i>		<i>P_t</i>		rpm	rpm	Nm	CV	kW	kW		rpm	rpm	Nm	CV	kW	kW																																																																																																																																																																																													
	800	11	10100	16	12				630	9	10100	13	9					500	7	10100	9.9	7.3			80		1750	22	10100	32	23	58	200			1750	9	10100	13	9	56				1450	18	10100	26	19				1000	13	10100	18	13		800	10	10100	14	11		630	8	10100	11	8				500	6	10100	9	6.7			90		1750	19	10100	27	20	58		225		1750	8	10100	12	9	56				1450	16	10100	23	17				1000	11	10100	16	12		800	9	10100	13	9		630	7	10100	9.9	7.3				500	5	10100	7.8	5.8			100		1750	17	10100	25	18		58	250		1750	7	10100	10	7.3	56				1450	14	10100	21	15				1000	10	10100	14	10		800	8	10100	11	8		630	6	10100	8.9	6.6				500	5	10100	7.1	5.2			Ratio <i>i</i>		<i>n_v</i>	<i>n_l</i>	<i>M_{Nl}</i>	<i>P_N</i>			<i>P_t</i>	Ratio <i>i</i>	<i>n_v</i>	<i>n_l</i>	<i>M_{Nl}</i>	<i>P_N</i>		<i>P_t</i>		rpm	rpm	Nm	CV	kW	kW		rpm	rpm	Nm	CV	kW	kW																																																																																																																																																																																																						
	630	9	10100	13	9				500	7	10100	9.9	7.3	80				1750	22	10100	32	23	58	200			1750	9	10100	13	9			56		1450	18	10100	26	19					1000	13	10100	18	13				800	10	10100	14	11		630	8	10100	11	8		500	6	10100	9	6.7	90			1750	19	10100	27	20	58	225			1750	8	10100	12	9		56			1450	16	10100	23	17					1000	11	10100	16	12				800	9	10100	13	9		630	7	10100	9.9	7.3		500	5	10100	7.8	5.8	100			1750	17	10100	25	18	58	250			1750	7	10100	10	7.3	56				1450	14	10100	21	15					1000	10	10100	14	10				800	8	10100	11	8		630	6	10100	8.9	6.6		500	5	10100	7.1	5.2	Ratio <i>i</i>			<i>n_v</i>	<i>n_l</i>	<i>M_{Nl}</i>	<i>P_N</i>		<i>P_t</i>	Ratio <i>i</i>	<i>n_v</i>		<i>n_l</i>	<i>M_{Nl}</i>	<i>P_N</i>		<i>P_t</i>		rpm	rpm	Nm	CV	kW	kW		rpm	rpm	Nm	CV	kW	kW																																																																																																																																																																																																															
	500	7	10100	9.9	7.3			80	1750	22	10100	32	23			58	200	1750	9	10100	13	9				56	1450	18	10100	26	19					1000	13	10100	18	13					800	10	10100	14	11				630	8	10100	11	8		500	6	10100	9	6.7	90	1750	19	10100	27	20		58	225	1750	8	10100	12	9				56	1450	16	10100	23	17					1000	11	10100	16	12					800	9	10100	13	9				630	7	10100	9.9	7.3		500	5	10100	7.8	5.8	100	1750	17	10100	25	18		58	250	1750	7	10100	10	7.3				56	1450	14	10100	21	15					1000	10	10100	14	10					800	8	10100	11	8				630	6	10100	8.9	6.6		500	5	10100	7.1	5.2	Ratio <i>i</i>	<i>n_v</i>	<i>n_l</i>	<i>M_{Nl}</i>	<i>P_N</i>		<i>P_t</i>	Ratio <i>i</i>	<i>n_v</i>	<i>n_l</i>	<i>M_{Nl}</i>	<i>P_N</i>		<i>P_t</i>		rpm	rpm	Nm	CV	kW	kW		rpm	rpm	Nm	CV	kW	kW																																																																																																																																																																																																																								
80	1750	22	10100	32	23	58	200		1750	9	10100	13	9		56																																																																																																																																																																																																																																																																																																																																																																																																																		
	1450	18	10100	26	19				1000	13	10100	18	13					800	10	10100	14	11					630	8	10100	11	8					500	6	10100	9	6.7				90	1750	19	10100	27	20		58	225	1750	8	10100	12	9	56	1450	16	10100	23	17		1000	11	10100	16	12				800	9	10100	13	9					630	7	10100	9.9	7.3					500	5	10100	7.8	5.8				100	1750	17	10100	25	18		58	250	1750	7	10100	10	7.3	56	1450	14	10100	21	15		1000	10	10100	14	10				800	8	10100	11	8					630	6	10100	8.9	6.6					500	5	10100	7.1	5.2				Ratio <i>i</i>	<i>n_v</i>	<i>n_l</i>	<i>M_{Nl}</i>	<i>P_N</i>			<i>P_t</i>	Ratio <i>i</i>	<i>n_v</i>	<i>n_l</i>	<i>M_{Nl}</i>	<i>P_N</i>		<i>P_t</i>		rpm	rpm	Nm	CV	kW	kW		rpm	rpm	Nm	CV	kW	kW																																																																																																																																																																																																																																											
	1000	13	10100	18	13				800	10	10100	14	11					630	8	10100	11	8					500	6	10100	9	6.7				90	1750	19	10100	27	20		58	225		1750	8	10100	12	9	56			1450	16	10100	23	17		1000	11	10100	16	12		800	9	10100	13	9				630	7	10100	9.9	7.3					500	5	10100	7.8	5.8				100	1750	17	10100	25	18		58	250		1750	7	10100	10	7.3	56			1450	14	10100	21	15		1000	10	10100	14	10		800	8	10100	11	8				630	6	10100	8.9	6.6					500	5	10100	7.1	5.2				Ratio <i>i</i>	<i>n_v</i>	<i>n_l</i>	<i>M_{Nl}</i>	<i>P_N</i>			<i>P_t</i>	Ratio <i>i</i>	<i>n_v</i>	<i>n_l</i>	<i>M_{Nl}</i>	<i>P_N</i>		<i>P_t</i>		rpm	rpm	Nm	CV	kW	kW		rpm	rpm	Nm	CV	kW	kW																																																																																																																																																																																																																																																				
	800	10	10100	14	11				630	8	10100	11	8					500	6	10100	9	6.7			90		1750	19	10100	27	20	58	225			1750	8	10100	12	9	56				1450	16	10100	23	17				1000	11	10100	16	12		800	9	10100	13	9		630	7	10100	9.9	7.3				500	5	10100	7.8	5.8			100		1750	17	10100	25	18	58		250		1750	7	10100	10	7.3	56				1450	14	10100	21	15				1000	10	10100	14	10		800	8	10100	11	8		630	6	10100	8.9	6.6				500	5	10100	7.1	5.2			Ratio <i>i</i>		<i>n_v</i>	<i>n_l</i>	<i>M_{Nl}</i>	<i>P_N</i>			<i>P_t</i>	Ratio <i>i</i>	<i>n_v</i>	<i>n_l</i>	<i>M_{Nl}</i>	<i>P_N</i>		<i>P_t</i>		rpm	rpm	Nm	CV	kW	kW		rpm	rpm	Nm	CV	kW	kW																																																																																																																																																																																																																																																													
	630	8	10100	11	8				500	6	10100	9	6.7	90				1750	19	10100	27	20	58	225			1750	8	10100	12	9			56		1450	16	10100	23	17					1000	11	10100	16	12				800	9	10100	13	9		630	7	10100	9.9	7.3		500	5	10100	7.8	5.8	100			1750	17	10100	25	18	58	250			1750	7	10100	10	7.3		56			1450	14	10100	21	15					1000	10	10100	14	10				800	8	10100	11	8		630	6	10100	8.9	6.6		500	5	10100	7.1	5.2	Ratio <i>i</i>			<i>n_v</i>	<i>n_l</i>	<i>M_{Nl}</i>	<i>P_N</i>		<i>P_t</i>	Ratio <i>i</i>	<i>n_v</i>		<i>n_l</i>	<i>M_{Nl}</i>	<i>P_N</i>		<i>P_t</i>		rpm	rpm	Nm	CV	kW	kW		rpm	rpm	Nm	CV	kW	kW																																																																																																																																																																																																																																																																						
	500	6	10100	9	6.7			90	1750	19	10100	27	20			58	225	1750	8	10100	12	9				56	1450	16	10100	23	17					1000	11	10100	16	12					800	9	10100	13	9				630	7	10100	9.9	7.3		500	5	10100	7.8	5.8	100	1750	17	10100	25	18		58	250	1750	7	10100	10	7.3				56	1450	14	10100	21	15					1000	10	10100	14	10					800	8	10100	11	8				630	6	10100	8.9	6.6		500	5	10100	7.1	5.2	Ratio <i>i</i>	<i>n_v</i>	<i>n_l</i>	<i>M_{Nl}</i>	<i>P_N</i>		<i>P_t</i>	Ratio <i>i</i>	<i>n_v</i>	<i>n_l</i>	<i>M_{Nl}</i>	<i>P_N</i>		<i>P_t</i>		rpm	rpm	Nm	CV	kW	kW		rpm	rpm	Nm	CV	kW	kW																																																																																																																																																																																																																																																																															
90	1750	19	10100	27	20	58	225		1750	8	10100	12	9		56																																																																																																																																																																																																																																																																																																																																																																																																																		
	1450	16	10100	23	17				1000	11	10100	16	12					800	9	10100	13	9					630	7	10100	9.9	7.3					500	5	10100	7.8	5.8				100	1750	17	10100	25	18		58	250	1750	7	10100	10	7.3	56	1450	14	10100	21	15		1000	10	10100	14	10				800	8	10100	11	8					630	6	10100	8.9	6.6					500	5	10100	7.1	5.2				Ratio <i>i</i>	<i>n_v</i>	<i>n_l</i>	<i>M_{Nl}</i>	<i>P_N</i>			<i>P_t</i>	Ratio <i>i</i>	<i>n_v</i>	<i>n_l</i>	<i>M_{Nl}</i>	<i>P_N</i>		<i>P_t</i>		rpm	rpm	Nm	CV	kW	kW		rpm	rpm	Nm	CV	kW	kW																																																																																																																																																																																																																																																																																																		
	1000	11	10100	16	12				800	9	10100	13	9					630	7	10100	9.9	7.3					500	5	10100	7.8	5.8				100	1750	17	10100	25	18		58	250		1750	7	10100	10	7.3	56			1450	14	10100	21	15		1000	10	10100	14	10		800	8	10100	11	8				630	6	10100	8.9	6.6					500	5	10100	7.1	5.2				Ratio <i>i</i>	<i>n_v</i>	<i>n_l</i>	<i>M_{Nl}</i>	<i>P_N</i>			<i>P_t</i>	Ratio <i>i</i>	<i>n_v</i>	<i>n_l</i>	<i>M_{Nl}</i>	<i>P_N</i>		<i>P_t</i>		rpm	rpm	Nm	CV	kW	kW		rpm	rpm	Nm	CV	kW	kW																																																																																																																																																																																																																																																																																																											
	800	9	10100	13	9				630	7	10100	9.9	7.3					500	5	10100	7.8	5.8			100		1750	17	10100	25	18	58	250			1750	7	10100	10	7.3	56				1450	14	10100	21	15				1000	10	10100	14	10		800	8	10100	11	8		630	6	10100	8.9	6.6				500	5	10100	7.1	5.2			Ratio <i>i</i>		<i>n_v</i>	<i>n_l</i>	<i>M_{Nl}</i>	<i>P_N</i>		<i>P_t</i>		Ratio <i>i</i>	<i>n_v</i>	<i>n_l</i>	<i>M_{Nl}</i>	<i>P_N</i>		<i>P_t</i>		rpm	rpm	Nm	CV	kW	kW		rpm	rpm	Nm	CV	kW	kW																																																																																																																																																																																																																																																																																																																				
	630	7	10100	9.9	7.3				500	5	10100	7.8	5.8	100				1750	17	10100	25	18	58	250			1750	7	10100	10	7.3			56		1450	14	10100	21	15					1000	10	10100	14	10				800	8	10100	11	8		630	6	10100	8.9	6.6		500	5	10100	7.1	5.2	Ratio <i>i</i>			<i>n_v</i>	<i>n_l</i>	<i>M_{Nl}</i>	<i>P_N</i>		<i>P_t</i>	Ratio <i>i</i>	<i>n_v</i>		<i>n_l</i>	<i>M_{Nl}</i>	<i>P_N</i>		<i>P_t</i>		rpm	rpm	Nm	CV	kW	kW		rpm	rpm	Nm	CV	kW	kW																																																																																																																																																																																																																																																																																																																													
	500	5	10100	7.8	5.8			100	1750	17	10100	25	18			58	250	1750	7	10100	10	7.3				56	1450	14	10100	21	15					1000	10	10100	14	10					800	8	10100	11	8				630	6	10100	8.9	6.6		500	5	10100	7.1	5.2	Ratio <i>i</i>	<i>n_v</i>	<i>n_l</i>	<i>M_{Nl}</i>	<i>P_N</i>		<i>P_t</i>	Ratio <i>i</i>	<i>n_v</i>	<i>n_l</i>	<i>M_{Nl}</i>	<i>P_N</i>		<i>P_t</i>		rpm	rpm	Nm	CV	kW	kW		rpm	rpm	Nm	CV	kW	kW																																																																																																																																																																																																																																																																																																																																						
100	1750	17	10100	25	18	58	250		1750	7	10100	10	7.3		56																																																																																																																																																																																																																																																																																																																																																																																																																		
	1450	14	10100	21	15				1000	10	10100	14	10					800	8	10100	11	8					630	6	10100	8.9	6.6					500	5	10100	7.1	5.2				Ratio <i>i</i>	<i>n_v</i>	<i>n_l</i>	<i>M_{Nl}</i>	<i>P_N</i>			<i>P_t</i>	Ratio <i>i</i>	<i>n_v</i>	<i>n_l</i>	<i>M_{Nl}</i>	<i>P_N</i>		<i>P_t</i>		rpm	rpm	Nm	CV	kW	kW		rpm	rpm	Nm	CV	kW	kW																																																																																																																																																																																																																																																																																																																																																									
	1000	10	10100	14	10				800	8	10100	11	8					630	6	10100	8.9	6.6					500	5	10100	7.1	5.2				Ratio <i>i</i>	<i>n_v</i>	<i>n_l</i>	<i>M_{Nl}</i>	<i>P_N</i>			<i>P_t</i>	Ratio <i>i</i>	<i>n_v</i>	<i>n_l</i>	<i>M_{Nl}</i>	<i>P_N</i>		<i>P_t</i>		rpm	rpm	Nm	CV	kW	kW		rpm	rpm	Nm	CV	kW	kW																																																																																																																																																																																																																																																																																																																																																																		
	800	8	10100	11	8				630	6	10100	8.9	6.6					500	5	10100	7.1	5.2			Ratio <i>i</i>		<i>n_v</i>	<i>n_l</i>	<i>M_{Nl}</i>	<i>P_N</i>		<i>P_t</i>	Ratio <i>i</i>		<i>n_v</i>	<i>n_l</i>	<i>M_{Nl}</i>	<i>P_N</i>		<i>P_t</i>		rpm	rpm	Nm	CV	kW	kW		rpm	rpm	Nm	CV	kW	kW																																																																																																																																																																																																																																																																																																																																																																											
	630	6	10100	8.9	6.6				500	5	10100	7.1	5.2	Ratio <i>i</i>				<i>n_v</i>	<i>n_l</i>	<i>M_{Nl}</i>	<i>P_N</i>		<i>P_t</i>	Ratio <i>i</i>	<i>n_v</i>		<i>n_l</i>	<i>M_{Nl}</i>	<i>P_N</i>		<i>P_t</i>		rpm	rpm	Nm	CV	kW	kW		rpm	rpm	Nm	CV	kW	kW																																																																																																																																																																																																																																																																																																																																																																																				
	500	5	10100	7.1	5.2																																																																																																																																																																																																																																																																																																																																																																																																																												
Ratio <i>i</i>	<i>n_v</i>	<i>n_l</i>	<i>M_{Nl}</i>	<i>P_N</i>		<i>P_t</i>	Ratio <i>i</i>	<i>n_v</i>	<i>n_l</i>	<i>M_{Nl}</i>	<i>P_N</i>		<i>P_t</i>																																																																																																																																																																																																																																																																																																																																																																																																																				
	rpm	rpm	Nm	CV	kW	kW		rpm	rpm	Nm	CV	kW	kW																																																																																																																																																																																																																																																																																																																																																																																																																				

- n_v*: revolutions per minute of the high speed shaft [r.p.m.].
- n_l*: revolutions per minute of the low speed shaft [r.p.m.].
- M_{Nl}*: nominal torque of the low speed shaft [r.p.m.].
- P_N*: nominal power at low speed shaft [CV (horse-power)-kW].
- P_t*: thermal capacity [kW].
- i*: transmission ratio *n_v/n_l*.

Nominal power and torque ratings RS

Size	8000 P						Size	8000 P																																																																																																																																																																																																																																																																																																																																																																																																																									
Ratio <i>i</i>	<i>n_v</i>	<i>n_l</i>	<i>M_{Nl}</i>	<i>P_N</i>		<i>P_t</i>	Ratio <i>i</i>	<i>n_v</i>	<i>n_l</i>	<i>M_{Nl}</i>	<i>P_N</i>		<i>P_t</i>																																																																																																																																																																																																																																																																																																																																																																																																																				
	rpm	rpm	Nm	CV	kW	kW		rpm	rpm	Nm	CV	kW	kW																																																																																																																																																																																																																																																																																																																																																																																																																				
45	1750	39	13000	72	53	56	112	1750	15	13000	29	21	56																																																																																																																																																																																																																																																																																																																																																																																																																				
	1450	32	13000	60	44			1000	22	13000	41	30		800	18	13000	33	24	630	14	13000	26	19	500	11	13000	21	15	50	1750	34	13000	64	47	56	125	1750	14	13000	26	19	56	1450	28	13000	53	39	1000	20	13000	36	27	800	16	13000	29	21	630	12	13000	23	17	500	10	13000	18	13	56	1750	32	13000	58	43	56	140	1750	12	13000	23	17	56	1450	26	13000	48	36	1000	18	13000	33	25	800	14	13000	27	20	630	11	13000	21	15	500	9	13000	17	12	63	1750	28	13000	51	38	56	160	1750	11	13000	21	15	56	1450	23	13000	42	31	1000	16	13000	29	22	800	13	13000	23	17	630	10	13000	18	14	500	8	13000	15	11	71	1750	24	13000	45	33	56	180	1750	10	13000	18	13	56	1450	20	13000	37	27	1000	14	13000	26	19	800	11	13000	20	15	630	9	13000	16	12	500	7	13000	13	9	80	1750	22	13000	41	30	56	200	1750	9	13000	16	12	56	1450	18	13000	34	25	1000	13	13000	23	17	800	10	13000	19	14	630	8	13000	15	11	500	6	13000	12	9	90	1750	19	13000	35	26	56	225	1750	8	13000	15	11	56	1450	16	13000	29	21	1000	11	13000	20	15	800	9	13000	16	12	630	7	13000	13	9	500	5	13000	10	7	100	1750	17	13000	32	23	56	250	1750	7	13000	13	9	56	1450	14	13000	26	19	1000	10	13000	18	13	800	8	13000	15	11	630	6	13000	11	8	500	5	13000	9.1	6.7	Ratio <i>i</i>	<i>n_v</i>	<i>n_l</i>	<i>M_{Nl}</i>	<i>P_N</i>		<i>P_t</i>	Ratio <i>i</i>	<i>n_v</i>	<i>n_l</i>	<i>M_{Nl}</i>	<i>P_N</i>		<i>P_t</i>		rpm	rpm	Nm	CV	kW	kW		rpm	rpm	Nm	CV	kW	kW																																																																																								
	1000	22	13000	41	30			800	18	13000	33	24		630	14	13000	26	19	500	11	13000	21	15	50	1750	34	13000	64		47	56	125	1750	14			13000	26	19	56	1450		28	13000	53	39	1000	20	13000	36	27	800	16	13000	29	21	630	12	13000	23	17	500	10	13000	18	13	56		1750	32	13000	58	43			56	140	1750	12	13000		23	17	56	1450	26	13000	48	36	1000	18	13000	33	25	800	14	13000	27	20	630	11	13000	21	15	500	9		13000	17	12	63	1750			28	13000	51	38	56		160	1750	11	13000	21	15	56	1450	23	13000	42	31	1000	16	13000	29	22	800	13	13000	23	17	630	10	13000		18	14	500	8	13000			15	11	71	1750	24		13000	45	33	56	180	1750	10	13000	18	13	56	1450	20	13000	37	27	1000	14	13000	26	19	800	11	13000	20		15	630	9	13000	16			12	500	7	13000	13		9	80	1750	22	13000	41	30	56	200	1750	9	13000	16	12	56	1450	18	13000	34	25	1000	13	13000	23	17		800	10	13000	19	14			630	8	13000	15	11		500	6	13000	12	9	90	1750	19	13000	35	26	56	225	1750	8	13000	15	11	56	1450	16	13000	29	21	1000		11	13000	20	15	800			9	13000	16	12	630		7	13000	13	9	500	5	13000	10	7	100	1750	17	13000	32	23	56	250	1750	7	13000	13	9	56	1450	14	13000	26	19	1000	10	13000	18	13	800	8	13000	15	11	630	6	13000	11	8	500	5	13000	9.1	6.7	Ratio <i>i</i>	<i>n_v</i>	<i>n_l</i>	<i>M_{Nl}</i>	<i>P_N</i>		<i>P_t</i>	Ratio <i>i</i>	<i>n_v</i>	<i>n_l</i>	<i>M_{Nl}</i>	<i>P_N</i>		<i>P_t</i>		rpm	rpm	Nm	CV	kW	kW		rpm	rpm	Nm	CV	kW	kW																																																																	
	800	18	13000	33	24			630	14	13000	26	19		500	11	13000	21	15	50	1750	34	13000	64		47	56	125	1750		14			13000	26			19	56	1450		28		13000	53	39	1000	20	13000	36	27	800	16	13000	29	21	630	12	13000	23	17	500	10	13000	18	13	56			1750	32	13000	58	43					56	140	1750		12	13000		23	17	56	1450	26	13000	48	36	1000	18	13000	33	25	800	14	13000	27	20	630	11	13000	21		15	500	9		13000			17	12	63	1750				28	13000	51	38	56		160	1750	11	13000	21	15	56	1450	23	13000	42	31	1000	16	13000	29	22	800		13	13000	23	17	630			10	13000		18	14		500	8	13000			15	11	71	1750	24		13000	45	33	56	180	1750	10	13000	18	13	56	1450	20	13000		37	27	1000	14	13000			26	19	800	11	13000		20		15	630	9	13000	16			12	500	7	13000	13		9	80	1750	22	13000	41	30	56	200	1750		9	13000	16	12	56			1450	18	13000	34	25		1000	13	13000	23	17		800	10	13000	19	14			630	8	13000	15	11		500	6	13000	12	9	90		1750	19	13000	35	26			56	225	1750	8	13000		15	11	56	1450	16	13000	29	21	1000		11	13000	20	15	800			9	13000	16	12	630		7	13000	13	9	500	5	13000	10	7	100	1750	17	13000	32	23	56	250	1750	7	13000	13	9	56	1450	14	13000	26	19	1000	10	13000	18	13	800	8	13000	15	11	630	6	13000	11	8	500	5	13000	9.1	6.7	Ratio <i>i</i>	<i>n_v</i>	<i>n_l</i>	<i>M_{Nl}</i>	<i>P_N</i>		<i>P_t</i>	Ratio <i>i</i>	<i>n_v</i>	<i>n_l</i>	<i>M_{Nl}</i>	<i>P_N</i>		<i>P_t</i>		rpm	rpm	Nm	CV	kW	kW		rpm	rpm	Nm	CV	kW	kW																																										
	630	14	13000	26	19			500	11	13000	21	15		50	1750	34	13000	64		47	56	125	1750		14			13000		26			19	56			1450		28		13000		53	39	1000	20	13000	36	27	800	16	13000	29	21	630	12	13000	23	17	500	10	13000	18	13	56				1750	32	13000	58	43							56		140	1750		12	13000		23	17	56	1450	26	13000	48	36	1000	18	13000	33	25	800	14	13000	27	20	630		11	13000	21		15			500	9		13000				17	12	63	1750				28	13000	51	38	56		160	1750	11	13000	21	15	56	1450	23	13000	42		31	1000	16	13000	29			22	800		13	13000		23	17	630			10	13000		18	14		500	8	13000			15	11	71	1750	24		13000	45	33		56	180	1750	10	13000			18	13	56	1450	20		13000		37	27	1000	14	13000			26	19	800	11	13000		20		15	630	9	13000	16			12		500	7	13000	13				9	80	1750	22	13000		41	30	56	200	1750		9	13000	16	12	56			1450	18	13000	34	25		1000	13	13000	23	17			800	10	13000	19	14					630	8	13000		15	11		500	6	13000	12	9	90		1750	19	13000	35	26			56	225	1750	8	13000		15	11	56	1450	16	13000	29	21	1000		11	13000	20	15	800			9	13000	16	12	630		7	13000	13	9	500	5	13000	10	7	100	1750	17	13000	32	23	56	250	1750	7	13000	13	9	56	1450	14	13000	26	19	1000	10	13000	18	13	800	8	13000	15	11	630	6	13000	11	8	500	5	13000	9.1	6.7	Ratio <i>i</i>	<i>n_v</i>	<i>n_l</i>	<i>M_{Nl}</i>	<i>P_N</i>		<i>P_t</i>	Ratio <i>i</i>	<i>n_v</i>	<i>n_l</i>	<i>M_{Nl}</i>	<i>P_N</i>		<i>P_t</i>		rpm	rpm	Nm	CV	kW	kW		rpm	rpm	Nm	CV	kW	kW																			
	500	11	13000	21	15			50	1750	34	13000	64			47	56	125	1750		14			13000		26			19		56			1450				28		13000		53		39	1000	20	13000	36	27	800	16	13000	29	21	630	12	13000	23	17	500	10	13000	18	13	56					1750	32	13000	58	43										56		140	1750		12	13000		23	17	56	1450	26	13000	48	36	1000	18	13000	33	25	800	14	13000		27	20	630		11			13000	21		15				500	9		13000				17	12	63	1750				28	13000	51	38	56		160	1750	11	13000		21	15	56	1450	23			13000	42		31	1000		16	13000	29			22	800		13	13000		23	17	630			10	13000		18	14		500	8	13000				15	11	71			1750	24		13000	45		33		56	180	1750	10	13000			18	13	56	1450	20		13000		37	27	1000	14	13000			26		19	800	11	13000				20		15	630	9		13000	16			12		500	7	13000	13				9	80	1750	22	13000		41	30	56	200	1750			9	13000	16	12	56					1450	18	13000		34	25		1000	13	13000	23	17			800	10	13000	19	14					630	8	13000		15	11		500	6	13000	12	9	90		1750	19	13000	35	26			56	225	1750	8	13000		15	11	56	1450	16	13000	29	21	1000		11	13000	20	15	800			9	13000	16	12	630		7	13000	13	9	500	5	13000	10	7	100	1750	17	13000	32	23	56	250	1750	7	13000	13	9	56	1450	14	13000	26	19	1000	10	13000	18	13	800	8	13000	15	11	630	6	13000	11	8	500	5	13000	9.1	6.7	Ratio <i>i</i>	<i>n_v</i>	<i>n_l</i>	<i>M_{Nl}</i>	<i>P_N</i>		<i>P_t</i>	Ratio <i>i</i>	<i>n_v</i>	<i>n_l</i>	<i>M_{Nl}</i>	<i>P_N</i>		<i>P_t</i>		rpm	rpm	Nm	CV	kW	kW		rpm	rpm
50	1750	34	13000	64	47	56	125		1750	14	13000	26	19		56																																																																																																																																																																																																																																																																																																																																																																																																																		
	1450	28	13000	53	39				1000	20	13000	36	27					800		16			13000		29			21	630				12		13000	23	17		500		10	13000	18	13	56	1750	32	13000	58	43	56	140	1750	12	13000	23	17	56	1450	26	13000	48	36					1000	18	13000	33	25	800	14	13000						27					20		630	11		13000	21		15	500	9	13000	17	12	63	1750	28	13000	51	38	56	160	1750	11	13000		21	15	56	1450	23		13000		42		31	1000		16				13000	29		22				800	13	13000	23				17	630	10	13000	18	14		500	8	13000	15	11	71		1750	24	13000	45	33	56			180	1750		10	13000		18	13	56			1450	20		13000	37		27	1000	14	13000			26	19		800	11	13000	20		15	630	9	13000				16	12	500			7	13000		13	9		80		1750	22	13000	41	30			56	200	1750	9	13000	16		12	56	1450		18	13000	34	25	1000	13			13000		23	17	800	10				13000		19	14	630		8	13000			15		11	500	6	13000	12		9	90			1750	19	13000	35	26	56		225	1750	8	13000	15			11	56	1450	16	13000					29	21	1000		11	13000		20	15	800	9	13000			16	12	630	7	13000					13	9	500		5	13000		10	7	100	1750	17	13000		32	23	56	250	1750			7	13000	13	9	56		1450	14	13000	26	19	1000	10	13000	18		13	800	8	13000	15			11	630	6	13000	11		8	500	5	13000	9.1	6.7	Ratio <i>i</i>	<i>n_v</i>	<i>n_l</i>	<i>M_{Nl}</i>	<i>P_N</i>		<i>P_t</i>	Ratio <i>i</i>	<i>n_v</i>	<i>n_l</i>	<i>M_{Nl}</i>	<i>P_N</i>		<i>P_t</i>		rpm	rpm	Nm	CV	kW	kW		rpm	rpm	Nm	CV	kW	kW															
	1000	20	13000	36	27				800	16	13000	29	21					630		12			13000	23	17			500	10		13000	18	13		56	1750	32		13000	58	43	56	140	1750		12	13000	23	17	56			1450	26	13000	48	36		1000	18	13000	33	25				800	14	13000	27	20	630	11	13000	21	15	500				9			13000		17		12	63		1750	28		13000	51	38	56	160	1750		11	13000	21	15	56			1450	23	13000	42	31	1000		16	13000		29	22	800	13	13000	23		17		630		10	13000		18				14	500	8	13000				15	11	71	1750	24	13000		45	33	56	180	1750		10	13000	18	13	56	1450		20	13000		37		27	1000	14	13000	26				19	800		11	13000		20	15	630	9			13000	16		12	500	7	13000		13	9	80	1750	22			13000	41	30	56	200	1750	9		13000	16	12			56	1450	18	13000	34					25	1000	13	13000		23		17		800	10	13000	19	14	630			8	13000	15	11	500	6		13000	12	9		90	1750	19	13000	35	26			56		225	1750	8	13000	15		11				56	1450	16	13000	29				21	1000	11	13000		20	15		800	9	13000	16	12			630	7	13000	13	9	500		5	13000	10	7	100			1750	17	13000	32	23					56	250	1750		7	13000		13	9		56	1450	14		13000	26			19			1000	10	13000	18			13	800	8	13000	15	11	630	6	13000		11	8	500	5	13000			9.1	6.7	Ratio <i>i</i>	<i>n_v</i>	<i>n_l</i>		<i>M_{Nl}</i>	<i>P_N</i>		<i>P_t</i>	Ratio <i>i</i>	<i>n_v</i>	<i>n_l</i>	<i>M_{Nl}</i>	<i>P_N</i>		<i>P_t</i>		rpm	rpm	Nm	CV	kW	kW		rpm	rpm	Nm	CV	kW	kW																								
	800	16	13000	29	21				630	12	13000	23	17					500	10	13000			18	13	56	1750	32	13000	58		43	56	140			1750	12	13000	23	17	56			1450		26	13000	48	36				1000	18	13000	33	25		800	14	13000	27	20			630	11	13000	21	15	500	9	13000	17	12	63	1750	28	13000		51			38		56	160	1750			11	13000		21	15	56			1450		23	13000	42	31				1000	16	13000	29	22	800		13	13000	23	17	630	10	13000	18	14		500	8	13000	15	11	71		1750		24		13000	45	33	56				180	1750		10	13000	18		13	56			1450		20	13000	37	27		1000		14	13000		26	19	800	11	13000	20	15		630	9	13000	16		12	500	7	13000	13	9	80			1750	22		13000	41	30	56		200	1750		9	13000			16	12	56			1450	18		13000	34	25		1000		13	13000	23	17	800	10			13000	19	14	630	8	13000		15		11	500	6	13000	12	9			90	1750	19	13000	35	26		56	225	1750			8	13000	15	11	56				1450		16	13000	29	21		1000		11	13000		20	15	800	9		13000		16	12	630	7		13000	13		9	500	5	13000	10			7	100	1750	17	13000	32		23	56	250	1750			7	13000	13	9	56	1450	14	13000					26	19	1000	10		13000	18			13	800		8	13000			15			11	630	6	13000			11	8	500	5	13000	9.1	6.7	Ratio <i>i</i>	<i>n_v</i>		<i>n_l</i>	<i>M_{Nl}</i>	<i>P_N</i>		<i>P_t</i>			Ratio <i>i</i>	<i>n_v</i>	<i>n_l</i>	<i>M_{Nl}</i>	<i>P_N</i>		<i>P_t</i>		rpm	rpm	Nm	CV	kW	kW		rpm	rpm	Nm	CV	kW	kW																																		
	630	12	13000	23	17				500	10	13000	18	13	56				1750	32	13000	58	43	56	140		1750	12	13000	23		17			56		1450	26	13000	48	36				1000		18	13000	33	25				800	14	13000	27	20		630	11	13000	21	15		500	9	13000	17	12	63	1750	28	13000	51	38		56	160	1750	11	13000	21		15				56		1450	23	13000		42	31				1000		16	13000	29	22				800	13	13000	23	17	630		10	13000	18	14	500	8	13000	15	11	71	1750	24	13000	45	33			56	180	1750	10	13000	18	13			56			1450		20	13000	37		27				1000		14	13000	26	19		800		11	13000		20	15	630	9	13000	16	12		500	7	13000	13	9	80	1750	22	13000	41	30		56	200	1750	9		13000	16	12		56		1450		18	13000			34	25				1000	13		13000	23	17		800		10	13000	19	14	630	8			13000	15	11	500	6	13000		12	9	90	1750	19	13000	35	26	56	225		1750	8	13000	15	11	56			1450			16	13000	29	21					1000		11	13000	20	15		800		9	13000		16	12	630	7		13000		13	9	500	5	13000	10	7		100	1750	17	13000	32	23	56	250		1750	7	13000	13	9	56			1450			14	13000	26	19		1000	10	13000					18	13	800	8		13000	15			11	630	6	13000	11			8	500	5	13000	9.1	6.7	Ratio <i>i</i>		<i>n_v</i>	<i>n_l</i>	<i>M_{Nl}</i>	<i>P_N</i>		<i>P_t</i>	Ratio <i>i</i>	<i>n_v</i>	<i>n_l</i>	<i>M_{Nl}</i>		<i>P_N</i>		<i>P_t</i>		rpm			rpm	Nm	CV	kW	kW			rpm	rpm	Nm	CV	kW	kW																																										
	500	10	13000	18	13			56	1750	32	13000	58	43			56	140	1750	12	13000	23	17				56	1450	26	13000	48	36					1000	18	13000	33	25				800		14	13000	27	20				630	11	13000	21	15		500	9	13000	17	12	63	1750	28	13000	51	38		56	160	1750	11	13000				21	15	56	1450	23	13000	42					31	1000	16	13000	29	22				800		13	13000	23	17				630	10	13000	18	14	500		8	13000	15	11	71	1750	24	13000	45		33	56	180	1750	10		13000			18	13	56	1450	20		13000		37		27		1000	14	13000	26	19				800		11	13000	20	15		630		9	13000		16	12	500	7	13000	13	9		80	1750	22	13000	41		30	56	200	1750	9				13000	16	12	56	1450	18				13000		34	25	1000	13	13000	23				17	800	10	13000	19	14		630		8	13000	15	11	500	6			13000	12	9	90	1750	19		13000	35		26	56	225	1750	8				13000	15	11	56	1450				16	13000		29	21	1000	11		13000	20		15		800	9	13000	16	12	630		7	13000		13	9	500	5		13000		10	7	100	1750	17	13000	32			23	56	250	1750	7				13000	13	9	56	1450				14		13000	26	19	1000	10		13000	18	13	800	8			13000	15	11	630	6	13000	11			8	500	5	13000	9.1			6.7	Ratio <i>i</i>	<i>n_v</i>	<i>n_l</i>	<i>M_{Nl}</i>	<i>P_N</i>			<i>P_t</i>	Ratio <i>i</i>	<i>n_v</i>	<i>n_l</i>	<i>M_{Nl}</i>	<i>P_N</i>		<i>P_t</i>		rpm	rpm	Nm	CV	kW	kW		rpm	rpm	Nm	CV	kW	kW																																																			
56	1750	32	13000	58	43	56	140		1750	12	13000	23	17		56																																																																																																																																																																																																																																																																																																																																																																																																																		
	1450	26	13000	48	36				1000	18	13000	33	25					800	14	13000	27	20					630	11	13000	21	15					500	9	13000	17	12				63	1750	28	13000	51	38		56	160	1750	11	13000	21	15	56	1450	23	13000	42	31		1000	16	13000	29	22				800	13	13000				23	17		630	10	13000	18					14	500	8	13000	15	11				71	1750	24	13000	45	33		56	180	1750	10	13000	18	13	56	1450	20	13000	37	27		1000	14	13000	26		19			800	11		13000			20	15		630	9		13000		16		12		500	7	13000	13	9				80	1750	22	13000	41	30		56	200	1750	9	13000	16	12	56	1450	18	13000	34	25		1000	13	13000	23		17			800	10				13000	19	14		630	8				13000		15	11	500	6	13000	12				9	90	1750	19	13000	35	26	56		225	1750	8	13000	15	11	56	1450	16	13000	29		21	1000	11	13000	20		15			800	9				13000	16	12		630				7	13000		13	9	500	5		13000	10		7		100	1750	17	13000	32	23	56	250	1750		7	13000	13	9	56	1450	14	13000	26		19	1000	10	13000	18		13			800	8				13000	15	11		630				6		13000	11	8	500	5		13000	9.1	6.7	Ratio <i>i</i>	<i>n_v</i>			<i>n_l</i>	<i>M_{Nl}</i>	<i>P_N</i>		<i>P_t</i>	Ratio <i>i</i>	<i>n_v</i>	<i>n_l</i>		<i>M_{Nl}</i>	<i>P_N</i>		<i>P_t</i>		rpm	rpm	Nm	CV	kW	kW		rpm	rpm	Nm	CV	kW	kW																																																																						
	1000	18	13000	33	25				800	14	13000	27	20					630	11	13000	21	15					500	9	13000	17	12				63	1750	28	13000	51	38		56	160		1750	11	13000	21	15	56			1450	23	13000	42	31		1000	16	13000	29	22		800	13	13000	23	17				630	10	13000				18	14		500	8	13000	15				11	71	1750	24	13000	45	33		56	180		1750	10	13000	18	13	56			1450	20	13000	37	27		1000	14	13000	26	19		800	11	13000	20		15			630	9		13000			16	12		500	7		13000		13		9	80	1750	22	13000	41	30		56	200		1750	9	13000	16	12	56			1450	18	13000	34	25		1000	13	13000	23	17		800	10	13000	19		14			630	8				13000	15	11		500	6				13000	12	9	90	1750	19	13000	35		26	56	225		1750	8	13000	15	11		56		1450	16	13000	29	21		1000	11	13000	20		15	800	9	13000	16		12			630	7				13000	13	9		500				5	13000	10	7	100	1750	17		13000	32	23	56	250		1750	7	13000	13	9			56	1450	14	13000	26	19		1000	10	13000	18		13	800	8	13000	15		11			630	6				13000	11	8		500				5	13000	9.1	6.7	Ratio <i>i</i>	<i>n_v</i>	<i>n_l</i>		<i>M_{Nl}</i>	<i>P_N</i>		<i>P_t</i>	Ratio <i>i</i>	<i>n_v</i>	<i>n_l</i>	<i>M_{Nl}</i>	<i>P_N</i>		<i>P_t</i>		rpm	rpm	Nm	CV	kW	kW		rpm	rpm	Nm	CV	kW	kW																																																																															
	800	14	13000	27	20				630	11	13000	21	15					500	9	13000	17	12			63		1750	28	13000	51	38	56	160			1750	11	13000	21	15	56				1450	23	13000	42	31				1000	16	13000	29	22		800	13	13000	23	17		630	10	13000	18	14				500	8	13000	15			11	71		1750	24	13000	45	33	56		180		1750	10	13000	18	13	56				1450	20	13000	37	27				1000	14	13000	26	19		800	11	13000	20	15		630	9	13000	16		12			500	7	13000	13			9	80		1750	22	13000	41		30	56	200		1750	9	13000	16	12	56				1450	18	13000	34	25				1000	13	13000	23	17		800	10	13000	19	14		630	8	13000	15		11			500	6	13000			12	9	90		1750	19	13000		35	26	56	225		1750	8	13000	15	11	56				1450	16	13000	29	21				1000	11	13000	20	15		800	9	13000	16		12	630	7	13000	13		9			500	5			13000	10	7	100		1750		17	13000	32	23	56	250		1750	7	13000	13	9	56				1450	14	13000	26	19				1000	10	13000	18	13		800	8	13000	15		11	630	6	13000	11		8			500	5			13000	9.1	6.7	Ratio <i>i</i>		<i>n_v</i>		<i>n_l</i>	<i>M_{Nl}</i>	<i>P_N</i>		<i>P_t</i>	Ratio <i>i</i>	<i>n_v</i>	<i>n_l</i>	<i>M_{Nl}</i>	<i>P_N</i>		<i>P_t</i>		rpm	rpm	Nm	CV	kW	kW		rpm	rpm	Nm	CV	kW	kW																																																																																								
	630	11	13000	21	15				500	9	13000	17	12	63				1750	28	13000	51	38	56	160			1750	11	13000	21	15			56		1450	23	13000	42	31					1000	16	13000	29	22				800	13	13000	23	17		630	10	13000	18	14		500	8	13000	15	11	71			1750	24	13000	45	33	56	180			1750	10	13000	18	13		56			1450	20	13000	37	27					1000	14	13000	26	19				800	11	13000	20	15		630	9	13000	16	12		500	7	13000	13	9	80			1750	22	13000	41	30	56	200			1750	9	13000	16	12	56				1450	18	13000	34	25					1000	13	13000	23	17				800	10	13000	19	14		630	8	13000	15	11		500	6	13000	12	9	90			1750	19	13000	35	26	56	225			1750	8	13000	15	11	56				1450	16	13000	29	21					1000	11	13000	20	15				800	9	13000	16	12		630	7	13000	13		9	500	5	13000	10	7	100			1750	17	13000	32	23	56	250			1750	7	13000	13	9	56				1450	14	13000	26	19					1000	10	13000	18	13				800	8	13000	15	11		630	6	13000	11		8	500	5	13000	9.1	6.7	Ratio <i>i</i>			<i>n_v</i>	<i>n_l</i>	<i>M_{Nl}</i>	<i>P_N</i>		<i>P_t</i>	Ratio <i>i</i>	<i>n_v</i>		<i>n_l</i>	<i>M_{Nl}</i>	<i>P_N</i>		<i>P_t</i>		rpm	rpm	Nm	CV	kW	kW		rpm	rpm	Nm	CV	kW	kW																																																																																																	
	500	9	13000	17	12			63	1750	28	13000	51	38			56	160	1750	11	13000	21	15				56	1450	23	13000	42	31					1000	16	13000	29	22					800	13	13000	23	17				630	10	13000	18	14		500	8	13000	15	11	71	1750	24	13000	45	33		56	180	1750	10	13000	18	13				56	1450	20	13000	37	27					1000	14	13000	26	19					800	11	13000	20	15				630	9	13000	16	12		500	7	13000	13	9	80	1750	22	13000	41	30		56	200	1750	9	13000	16	12				56	1450	18	13000	34	25					1000	13	13000	23	17					800	10	13000	19	14				630	8	13000	15	11		500	6	13000	12	9	90	1750	19	13000	35	26		56	225	1750	8	13000	15	11				56	1450	16	13000	29	21					1000	11	13000	20	15					800	9	13000	16	12				630	7	13000	13	9		500	5	13000	10	7	100	1750	17	13000	32	23		56	250	1750	7	13000	13	9				56	1450	14	13000	26	19					1000	10	13000	18	13					800	8	13000	15	11				630	6	13000	11	8		500	5	13000	9.1	6.7	Ratio <i>i</i>	<i>n_v</i>	<i>n_l</i>	<i>M_{Nl}</i>	<i>P_N</i>		<i>P_t</i>	Ratio <i>i</i>	<i>n_v</i>	<i>n_l</i>	<i>M_{Nl}</i>	<i>P_N</i>		<i>P_t</i>		rpm	rpm	Nm	CV	kW	kW		rpm	rpm	Nm	CV	kW	kW																																																																																																										
63	1750	28	13000	51	38	56	160		1750	11	13000	21	15		56																																																																																																																																																																																																																																																																																																																																																																																																																		
	1450	23	13000	42	31				1000	16	13000	29	22					800	13	13000	23	17					630	10	13000	18	14					500	8	13000	15	11				71	1750	24	13000	45	33		56	180	1750	10	13000	18	13	56	1450	20	13000	37	27		1000	14	13000	26	19				800	11	13000	20	15					630	9	13000	16	12					500	7	13000	13	9				80	1750	22	13000	41	30		56	200	1750	9	13000	16	12	56	1450	18	13000	34	25		1000	13	13000	23	17				800	10	13000	19	14					630	8	13000	15	11					500	6	13000	12	9				90	1750	19	13000	35	26		56	225	1750	8	13000	15	11	56	1450	16	13000	29	21		1000	11	13000	20	15				800	9	13000	16	12					630	7	13000	13	9					500	5	13000	10	7				100	1750	17	13000	32	23	56		250	1750	7	13000	13	9	56	1450	14	13000	26	19		1000	10	13000	18	13				800	8	13000	15	11					630	6	13000	11	8					500	5	13000	9.1	6.7				Ratio <i>i</i>	<i>n_v</i>	<i>n_l</i>	<i>M_{Nl}</i>	<i>P_N</i>		<i>P_t</i>	Ratio <i>i</i>		<i>n_v</i>	<i>n_l</i>	<i>M_{Nl}</i>	<i>P_N</i>		<i>P_t</i>		rpm	rpm	Nm	CV	kW	kW		rpm	rpm	Nm	CV	kW	kW																																																																																																																													
	1000	16	13000	29	22				800	13	13000	23	17					630	10	13000	18	14					500	8	13000	15	11				71	1750	24	13000	45	33		56	180		1750	10	13000	18	13	56			1450	20	13000	37	27		1000	14	13000	26	19		800	11	13000	20	15				630	9	13000	16	12					500	7	13000	13	9				80	1750	22	13000	41	30		56	200		1750	9	13000	16	12	56			1450	18	13000	34	25		1000	13	13000	23	17		800	10	13000	19	14				630	8	13000	15	11					500	6	13000	12	9				90	1750	19	13000	35	26		56	225		1750	8	13000	15	11	56			1450	16	13000	29	21		1000	11	13000	20	15		800	9	13000	16	12				630	7	13000	13	9					500	5	13000	10	7				100	1750	17	13000	32	23		56	250		1750	7	13000	13	9		56		1450	14	13000	26	19		1000	10	13000	18	13		800	8	13000	15	11				630	6	13000	11	8					500	5	13000	9.1	6.7				Ratio <i>i</i>	<i>n_v</i>	<i>n_l</i>	<i>M_{Nl}</i>	<i>P_N</i>			<i>P_t</i>	Ratio <i>i</i>	<i>n_v</i>	<i>n_l</i>	<i>M_{Nl}</i>	<i>P_N</i>		<i>P_t</i>		rpm	rpm	Nm	CV	kW	kW		rpm	rpm	Nm	CV	kW	kW																																																																																																																																						
	800	13	13000	23	17				630	10	13000	18	14					500	8	13000	15	11			71		1750	24	13000	45	33	56	180			1750	10	13000	18	13	56				1450	20	13000	37	27				1000	14	13000	26	19		800	11	13000	20	15		630	9	13000	16	12				500	7	13000	13	9			80		1750	22	13000	41	30	56		200		1750	9	13000	16	12	56				1450	18	13000	34	25				1000	13	13000	23	17		800	10	13000	19	14		630	8	13000	15	11				500	6	13000	12	9			90		1750	19	13000	35	26		56	225		1750	8	13000	15	11	56				1450	16	13000	29	21				1000	11	13000	20	15		800	9	13000	16	12		630	7	13000	13	9				500	5	13000	10	7			100		1750	17	13000	32	23		56	250		1750	7	13000	13	9	56				1450	14	13000	26	19				1000	10	13000	18	13		800	8	13000	15	11		630	6	13000	11	8				500	5	13000	9.1	6.7			Ratio <i>i</i>		<i>n_v</i>	<i>n_l</i>	<i>M_{Nl}</i>	<i>P_N</i>			<i>P_t</i>	Ratio <i>i</i>	<i>n_v</i>	<i>n_l</i>	<i>M_{Nl}</i>	<i>P_N</i>		<i>P_t</i>		rpm	rpm	Nm	CV	kW	kW		rpm	rpm	Nm	CV	kW	kW																																																																																																																																															
	630	10	13000	18	14				500	8	13000	15	11	71				1750	24	13000	45	33	56	180			1750	10	13000	18	13			56		1450	20	13000	37	27					1000	14	13000	26	19				800	11	13000	20	15		630	9	13000	16	12		500	7	13000	13	9	80			1750	22	13000	41	30	56	200			1750	9	13000	16	12		56			1450	18	13000	34	25					1000	13	13000	23	17				800	10	13000	19	14		630	8	13000	15	11		500	6	13000	12	9	90			1750	19	13000	35	26	56	225			1750	8	13000	15	11	56				1450	16	13000	29	21					1000	11	13000	20	15				800	9	13000	16	12		630	7	13000	13	9		500	5	13000	10	7	100			1750	17	13000	32	23	56	250			1750	7	13000	13	9	56				1450	14	13000	26	19					1000	10	13000	18	13				800	8	13000	15	11		630	6	13000	11	8		500	5	13000	9.1	6.7	Ratio <i>i</i>			<i>n_v</i>	<i>n_l</i>	<i>M_{Nl}</i>	<i>P_N</i>		<i>P_t</i>	Ratio <i>i</i>	<i>n_v</i>		<i>n_l</i>	<i>M_{Nl}</i>	<i>P_N</i>		<i>P_t</i>		rpm	rpm	Nm	CV	kW	kW		rpm	rpm	Nm	CV	kW	kW																																																																																																																																																								
	500	8	13000	15	11			71	1750	24	13000	45	33			56	180	1750	10	13000	18	13				56	1450	20	13000	37	27					1000	14	13000	26	19					800	11	13000	20	15				630	9	13000	16	12		500	7	13000	13	9	80	1750	22	13000	41	30		56	200	1750	9	13000	16	12				56	1450	18	13000	34	25					1000	13	13000	23	17					800	10	13000	19	14				630	8	13000	15	11		500	6	13000	12	9	90	1750	19	13000	35	26		56	225	1750	8	13000	15	11				56	1450	16	13000	29	21					1000	11	13000	20	15					800	9	13000	16	12				630	7	13000	13	9		500	5	13000	10	7	100	1750	17	13000	32	23		56	250	1750	7	13000	13	9				56	1450	14	13000	26	19					1000	10	13000	18	13					800	8	13000	15	11				630	6	13000	11	8		500	5	13000	9.1	6.7	Ratio <i>i</i>	<i>n_v</i>	<i>n_l</i>	<i>M_{Nl}</i>	<i>P_N</i>		<i>P_t</i>	Ratio <i>i</i>	<i>n_v</i>	<i>n_l</i>	<i>M_{Nl}</i>	<i>P_N</i>		<i>P_t</i>		rpm	rpm	Nm	CV	kW	kW		rpm	rpm	Nm	CV	kW	kW																																																																																																																																																																	
71	1750	24	13000	45	33	56	180		1750	10	13000	18	13		56																																																																																																																																																																																																																																																																																																																																																																																																																		
	1450	20	13000	37	27				1000	14	13000	26	19					800	11	13000	20	15					630	9	13000	16	12					500	7	13000	13	9				80	1750	22	13000	41	30		56	200	1750	9	13000	16	12	56	1450	18	13000	34	25		1000	13	13000	23	17				800	10	13000	19	14					630	8	13000	15	11					500	6	13000	12	9				90	1750	19	13000	35	26		56	225	1750	8	13000	15	11	56	1450	16	13000	29	21		1000	11	13000	20	15				800	9	13000	16	12					630	7	13000	13	9					500	5	13000	10	7				100	1750	17	13000	32	23		56	250	1750	7	13000	13	9	56	1450	14	13000	26	19		1000	10	13000	18	13				800	8	13000	15	11					630	6	13000	11	8					500	5	13000	9.1	6.7				Ratio <i>i</i>	<i>n_v</i>	<i>n_l</i>	<i>M_{Nl}</i>	<i>P_N</i>		<i>P_t</i>		Ratio <i>i</i>	<i>n_v</i>	<i>n_l</i>	<i>M_{Nl}</i>	<i>P_N</i>		<i>P_t</i>		rpm	rpm	Nm	CV	kW	kW		rpm	rpm	Nm	CV	kW	kW																																																																																																																																																																																				
	1000	14	13000	26	19				800	11	13000	20	15					630	9	13000	16	12					500	7	13000	13	9				80	1750	22	13000	41	30		56	200		1750	9	13000	16	12	56			1450	18	13000	34	25		1000	13	13000	23	17		800	10	13000	19	14				630	8	13000	15	11					500	6	13000	12	9				90	1750	19	13000	35	26		56	225		1750	8	13000	15	11	56			1450	16	13000	29	21		1000	11	13000	20	15		800	9	13000	16	12				630	7	13000	13	9					500	5	13000	10	7				100	1750	17	13000	32	23		56	250		1750	7	13000	13	9	56			1450	14	13000	26	19		1000	10	13000	18	13		800	8	13000	15	11				630	6	13000	11	8					500	5	13000	9.1	6.7				Ratio <i>i</i>	<i>n_v</i>	<i>n_l</i>	<i>M_{Nl}</i>	<i>P_N</i>			<i>P_t</i>	Ratio <i>i</i>	<i>n_v</i>	<i>n_l</i>	<i>M_{Nl}</i>	<i>P_N</i>		<i>P_t</i>		rpm	rpm	Nm	CV	kW	kW		rpm	rpm	Nm	CV	kW	kW																																																																																																																																																																																													
	800	11	13000	20	15				630	9	13000	16	12					500	7	13000	13	9			80		1750	22	13000	41	30	56	200			1750	9	13000	16	12	56				1450	18	13000	34	25				1000	13	13000	23	17		800	10	13000	19	14		630	8	13000	15	11				500	6	13000	12	9			90		1750	19	13000	35	26	56		225		1750	8	13000	15	11	56				1450	16	13000	29	21				1000	11	13000	20	15		800	9	13000	16	12		630	7	13000	13	9				500	5	13000	10	7			100		1750	17	13000	32	23		56	250		1750	7	13000	13	9	56				1450	14	13000	26	19				1000	10	13000	18	13		800	8	13000	15	11		630	6	13000	11	8				500	5	13000	9.1	6.7			Ratio <i>i</i>		<i>n_v</i>	<i>n_l</i>	<i>M_{Nl}</i>	<i>P_N</i>			<i>P_t</i>	Ratio <i>i</i>	<i>n_v</i>	<i>n_l</i>	<i>M_{Nl}</i>	<i>P_N</i>		<i>P_t</i>		rpm	rpm	Nm	CV	kW	kW		rpm	rpm	Nm	CV	kW	kW																																																																																																																																																																																																						
	630	9	13000	16	12				500	7	13000	13	9	80				1750	22	13000	41	30	56	200			1750	9	13000	16	12			56		1450	18	13000	34	25					1000	13	13000	23	17				800	10	13000	19	14		630	8	13000	15	11		500	6	13000	12	9	90			1750	19	13000	35	26	56	225			1750	8	13000	15	11		56			1450	16	13000	29	21					1000	11	13000	20	15				800	9	13000	16	12		630	7	13000	13	9		500	5	13000	10	7	100			1750	17	13000	32	23	56	250			1750	7	13000	13	9	56				1450	14	13000	26	19					1000	10	13000	18	13				800	8	13000	15	11		630	6	13000	11	8		500	5	13000	9.1	6.7	Ratio <i>i</i>			<i>n_v</i>	<i>n_l</i>	<i>M_{Nl}</i>	<i>P_N</i>		<i>P_t</i>	Ratio <i>i</i>	<i>n_v</i>		<i>n_l</i>	<i>M_{Nl}</i>	<i>P_N</i>		<i>P_t</i>		rpm	rpm	Nm	CV	kW	kW		rpm	rpm	Nm	CV	kW	kW																																																																																																																																																																																																															
	500	7	13000	13	9			80	1750	22	13000	41	30			56	200	1750	9	13000	16	12				56	1450	18	13000	34	25					1000	13	13000	23	17					800	10	13000	19	14				630	8	13000	15	11		500	6	13000	12	9	90	1750	19	13000	35	26		56	225	1750	8	13000	15	11				56	1450	16	13000	29	21					1000	11	13000	20	15					800	9	13000	16	12				630	7	13000	13	9		500	5	13000	10	7	100	1750	17	13000	32	23		56	250	1750	7	13000	13	9				56	1450	14	13000	26	19					1000	10	13000	18	13					800	8	13000	15	11				630	6	13000	11	8		500	5	13000	9.1	6.7	Ratio <i>i</i>	<i>n_v</i>	<i>n_l</i>	<i>M_{Nl}</i>	<i>P_N</i>		<i>P_t</i>	Ratio <i>i</i>	<i>n_v</i>	<i>n_l</i>	<i>M_{Nl}</i>	<i>P_N</i>		<i>P_t</i>		rpm	rpm	Nm	CV	kW	kW		rpm	rpm	Nm	CV	kW	kW																																																																																																																																																																																																																								
80	1750	22	13000	41	30	56	200		1750	9	13000	16	12		56																																																																																																																																																																																																																																																																																																																																																																																																																		
	1450	18	13000	34	25				1000	13	13000	23	17					800	10	13000	19	14					630	8	13000	15	11					500	6	13000	12	9				90	1750	19	13000	35	26		56	225	1750	8	13000	15	11	56	1450	16	13000	29	21		1000	11	13000	20	15				800	9	13000	16	12					630	7	13000	13	9					500	5	13000	10	7				100	1750	17	13000	32	23		56	250	1750	7	13000	13	9	56	1450	14	13000	26	19		1000	10	13000	18	13				800	8	13000	15	11					630	6	13000	11	8					500	5	13000	9.1	6.7				Ratio <i>i</i>	<i>n_v</i>	<i>n_l</i>	<i>M_{Nl}</i>	<i>P_N</i>			<i>P_t</i>	Ratio <i>i</i>	<i>n_v</i>	<i>n_l</i>	<i>M_{Nl}</i>	<i>P_N</i>		<i>P_t</i>		rpm	rpm	Nm	CV	kW	kW		rpm	rpm	Nm	CV	kW	kW																																																																																																																																																																																																																																											
	1000	13	13000	23	17				800	10	13000	19	14					630	8	13000	15	11					500	6	13000	12	9				90	1750	19	13000	35	26		56	225		1750	8	13000	15	11	56			1450	16	13000	29	21		1000	11	13000	20	15		800	9	13000	16	12				630	7	13000	13	9					500	5	13000	10	7				100	1750	17	13000	32	23		56	250		1750	7	13000	13	9	56			1450	14	13000	26	19		1000	10	13000	18	13		800	8	13000	15	11				630	6	13000	11	8					500	5	13000	9.1	6.7				Ratio <i>i</i>	<i>n_v</i>	<i>n_l</i>	<i>M_{Nl}</i>	<i>P_N</i>			<i>P_t</i>	Ratio <i>i</i>	<i>n_v</i>	<i>n_l</i>	<i>M_{Nl}</i>	<i>P_N</i>		<i>P_t</i>		rpm	rpm	Nm	CV	kW	kW		rpm	rpm	Nm	CV	kW	kW																																																																																																																																																																																																																																																				
	800	10	13000	19	14				630	8	13000	15	11					500	6	13000	12	9			90		1750	19	13000	35	26	56	225			1750	8	13000	15	11	56				1450	16	13000	29	21				1000	11	13000	20	15		800	9	13000	16	12		630	7	13000	13	9				500	5	13000	10	7			100		1750	17	13000	32	23	56		250		1750	7	13000	13	9	56				1450	14	13000	26	19				1000	10	13000	18	13		800	8	13000	15	11		630	6	13000	11	8				500	5	13000	9.1	6.7			Ratio <i>i</i>		<i>n_v</i>	<i>n_l</i>	<i>M_{Nl}</i>	<i>P_N</i>			<i>P_t</i>	Ratio <i>i</i>	<i>n_v</i>	<i>n_l</i>	<i>M_{Nl}</i>	<i>P_N</i>		<i>P_t</i>		rpm	rpm	Nm	CV	kW	kW		rpm	rpm	Nm	CV	kW	kW																																																																																																																																																																																																																																																													
	630	8	13000	15	11				500	6	13000	12	9	90				1750	19	13000	35	26	56	225			1750	8	13000	15	11			56		1450	16	13000	29	21					1000	11	13000	20	15				800	9	13000	16	12		630	7	13000	13	9		500	5	13000	10	7	100			1750	17	13000	32	23	56	250			1750	7	13000	13	9		56			1450	14	13000	26	19					1000	10	13000	18	13				800	8	13000	15	11		630	6	13000	11	8		500	5	13000	9.1	6.7	Ratio <i>i</i>			<i>n_v</i>	<i>n_l</i>	<i>M_{Nl}</i>	<i>P_N</i>		<i>P_t</i>	Ratio <i>i</i>	<i>n_v</i>		<i>n_l</i>	<i>M_{Nl}</i>	<i>P_N</i>		<i>P_t</i>		rpm	rpm	Nm	CV	kW	kW		rpm	rpm	Nm	CV	kW	kW																																																																																																																																																																																																																																																																						
	500	6	13000	12	9			90	1750	19	13000	35	26			56	225	1750	8	13000	15	11				56	1450	16	13000	29	21					1000	11	13000	20	15					800	9	13000	16	12				630	7	13000	13	9		500	5	13000	10	7	100	1750	17	13000	32	23		56	250	1750	7	13000	13	9				56	1450	14	13000	26	19					1000	10	13000	18	13					800	8	13000	15	11				630	6	13000	11	8		500	5	13000	9.1	6.7	Ratio <i>i</i>	<i>n_v</i>	<i>n_l</i>	<i>M_{Nl}</i>	<i>P_N</i>		<i>P_t</i>	Ratio <i>i</i>	<i>n_v</i>	<i>n_l</i>	<i>M_{Nl}</i>	<i>P_N</i>		<i>P_t</i>		rpm	rpm	Nm	CV	kW	kW		rpm	rpm	Nm	CV	kW	kW																																																																																																																																																																																																																																																																															
90	1750	19	13000	35	26	56	225		1750	8	13000	15	11		56																																																																																																																																																																																																																																																																																																																																																																																																																		
	1450	16	13000	29	21				1000	11	13000	20	15					800	9	13000	16	12					630	7	13000	13	9					500	5	13000	10	7				100	1750	17	13000	32	23		56	250	1750	7	13000	13	9	56	1450	14	13000	26	19		1000	10	13000	18	13				800	8	13000	15	11					630	6	13000	11	8					500	5	13000	9.1	6.7				Ratio <i>i</i>	<i>n_v</i>	<i>n_l</i>	<i>M_{Nl}</i>	<i>P_N</i>			<i>P_t</i>	Ratio <i>i</i>	<i>n_v</i>	<i>n_l</i>	<i>M_{Nl}</i>	<i>P_N</i>		<i>P_t</i>		rpm	rpm	Nm	CV	kW	kW		rpm	rpm	Nm	CV	kW	kW																																																																																																																																																																																																																																																																																																		
	1000	11	13000	20	15				800	9	13000	16	12					630	7	13000	13	9					500	5	13000	10	7				100	1750	17	13000	32	23		56	250		1750	7	13000	13	9	56			1450	14	13000	26	19		1000	10	13000	18	13		800	8	13000	15	11				630	6	13000	11	8					500	5	13000	9.1	6.7				Ratio <i>i</i>	<i>n_v</i>	<i>n_l</i>	<i>M_{Nl}</i>	<i>P_N</i>			<i>P_t</i>	Ratio <i>i</i>	<i>n_v</i>	<i>n_l</i>	<i>M_{Nl}</i>	<i>P_N</i>		<i>P_t</i>		rpm	rpm	Nm	CV	kW	kW		rpm	rpm	Nm	CV	kW	kW																																																																																																																																																																																																																																																																																																											
	800	9	13000	16	12				630	7	13000	13	9					500	5	13000	10	7			100		1750	17	13000	32	23	56	250			1750	7	13000	13	9	56				1450	14	13000	26	19				1000	10	13000	18	13		800	8	13000	15	11		630	6	13000	11	8				500	5	13000	9.1	6.7			Ratio <i>i</i>		<i>n_v</i>	<i>n_l</i>	<i>M_{Nl}</i>	<i>P_N</i>		<i>P_t</i>		Ratio <i>i</i>	<i>n_v</i>	<i>n_l</i>	<i>M_{Nl}</i>	<i>P_N</i>		<i>P_t</i>		rpm	rpm	Nm	CV	kW	kW		rpm	rpm	Nm	CV	kW	kW																																																																																																																																																																																																																																																																																																																				
	630	7	13000	13	9				500	5	13000	10	7	100				1750	17	13000	32	23	56	250			1750	7	13000	13	9			56		1450	14	13000	26	19					1000	10	13000	18	13				800	8	13000	15	11		630	6	13000	11	8		500	5	13000	9.1	6.7	Ratio <i>i</i>			<i>n_v</i>	<i>n_l</i>	<i>M_{Nl}</i>	<i>P_N</i>		<i>P_t</i>	Ratio <i>i</i>	<i>n_v</i>		<i>n_l</i>	<i>M_{Nl}</i>	<i>P_N</i>		<i>P_t</i>		rpm	rpm	Nm	CV	kW	kW		rpm	rpm	Nm	CV	kW	kW																																																																																																																																																																																																																																																																																																																													
	500	5	13000	10	7			100	1750	17	13000	32	23			56	250	1750	7	13000	13	9				56	1450	14	13000	26	19					1000	10	13000	18	13					800	8	13000	15	11				630	6	13000	11	8		500	5	13000	9.1	6.7	Ratio <i>i</i>	<i>n_v</i>	<i>n_l</i>	<i>M_{Nl}</i>	<i>P_N</i>		<i>P_t</i>	Ratio <i>i</i>	<i>n_v</i>	<i>n_l</i>	<i>M_{Nl}</i>	<i>P_N</i>		<i>P_t</i>		rpm	rpm	Nm	CV	kW	kW		rpm	rpm	Nm	CV	kW	kW																																																																																																																																																																																																																																																																																																																																						
100	1750	17	13000	32	23	56	250		1750	7	13000	13	9		56																																																																																																																																																																																																																																																																																																																																																																																																																		
	1450	14	13000	26	19				1000	10	13000	18	13					800	8	13000	15	11					630	6	13000	11	8					500	5	13000	9.1	6.7				Ratio <i>i</i>	<i>n_v</i>	<i>n_l</i>	<i>M_{Nl}</i>	<i>P_N</i>			<i>P_t</i>	Ratio <i>i</i>	<i>n_v</i>	<i>n_l</i>	<i>M_{Nl}</i>	<i>P_N</i>		<i>P_t</i>		rpm	rpm	Nm	CV	kW	kW		rpm	rpm	Nm	CV	kW	kW																																																																																																																																																																																																																																																																																																																																																									
	1000	10	13000	18	13				800	8	13000	15	11					630	6	13000	11	8					500	5	13000	9.1	6.7				Ratio <i>i</i>	<i>n_v</i>	<i>n_l</i>	<i>M_{Nl}</i>	<i>P_N</i>			<i>P_t</i>	Ratio <i>i</i>	<i>n_v</i>	<i>n_l</i>	<i>M_{Nl}</i>	<i>P_N</i>		<i>P_t</i>		rpm	rpm	Nm	CV	kW	kW		rpm	rpm	Nm	CV	kW	kW																																																																																																																																																																																																																																																																																																																																																																		
	800	8	13000	15	11				630	6	13000	11	8					500	5	13000	9.1	6.7			Ratio <i>i</i>		<i>n_v</i>	<i>n_l</i>	<i>M_{Nl}</i>	<i>P_N</i>		<i>P_t</i>	Ratio <i>i</i>		<i>n_v</i>	<i>n_l</i>	<i>M_{Nl}</i>	<i>P_N</i>		<i>P_t</i>		rpm	rpm	Nm	CV	kW	kW		rpm	rpm	Nm	CV	kW	kW																																																																																																																																																																																																																																																																																																																																																																											
	630	6	13000	11	8				500	5	13000	9.1	6.7	Ratio <i>i</i>				<i>n_v</i>	<i>n_l</i>	<i>M_{Nl}</i>	<i>P_N</i>		<i>P_t</i>	Ratio <i>i</i>	<i>n_v</i>		<i>n_l</i>	<i>M_{Nl}</i>	<i>P_N</i>		<i>P_t</i>		rpm	rpm	Nm	CV	kW	kW		rpm	rpm	Nm	CV	kW	kW																																																																																																																																																																																																																																																																																																																																																																																				
	500	5	13000	9.1	6.7																																																																																																																																																																																																																																																																																																																																																																																																																												
Ratio <i>i</i>	<i>n_v</i>	<i>n_l</i>	<i>M_{Nl}</i>	<i>P_N</i>		<i>P_t</i>	Ratio <i>i</i>	<i>n_v</i>	<i>n_l</i>	<i>M_{Nl}</i>	<i>P_N</i>		<i>P_t</i>																																																																																																																																																																																																																																																																																																																																																																																																																				
	rpm	rpm	Nm	CV	kW	kW		rpm	rpm	Nm	CV	kW	kW																																																																																																																																																																																																																																																																																																																																																																																																																				

n_v: revolutions per minute of the high speed shaft [r.p.m.].
n_l: revolutions per minute of the low speed shaft [r.p.m.].
M_{Nl}: nominal torque of the low speed shaft [Nm].
P_N: nominal power at low speed shaft [CV (horse-power)-kW].
P_t: thermal capacity [kW].
i: transmission ratio *n_v/n_l*.